

CAUTION - READ MANUAL & ALL NOTES BEFORE INSTALLING OR OPERATING CONTROL. SEE NOTE 1

⚠ DANGER

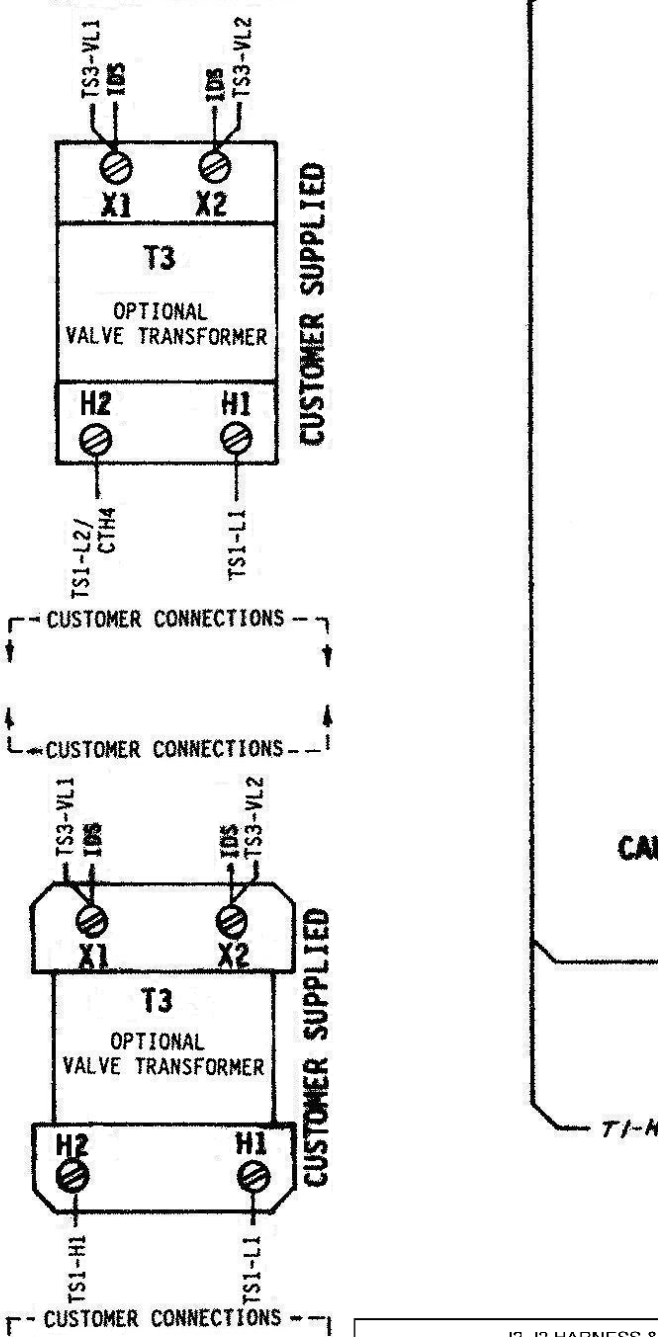
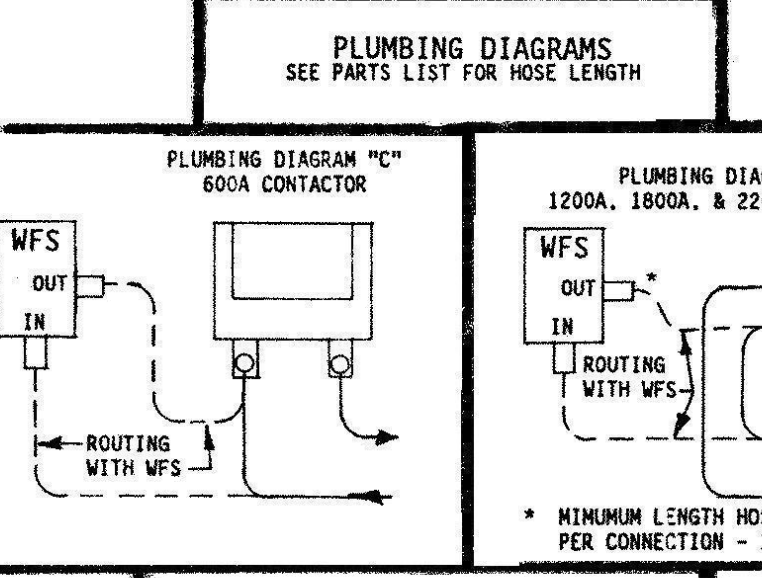
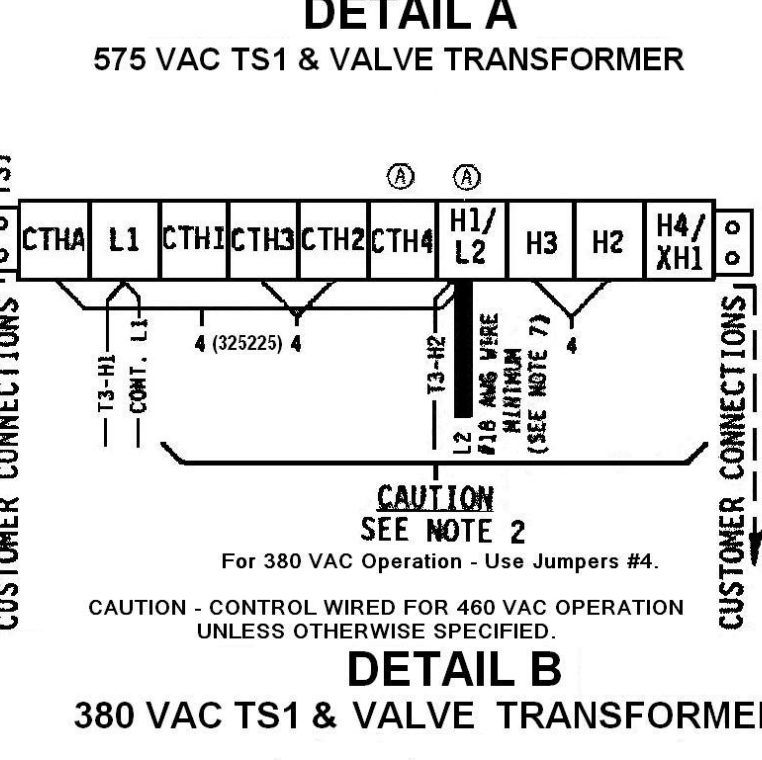
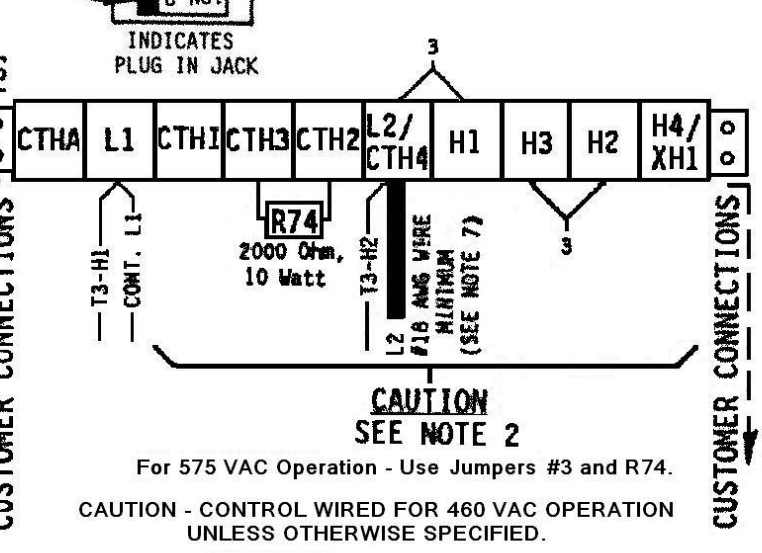
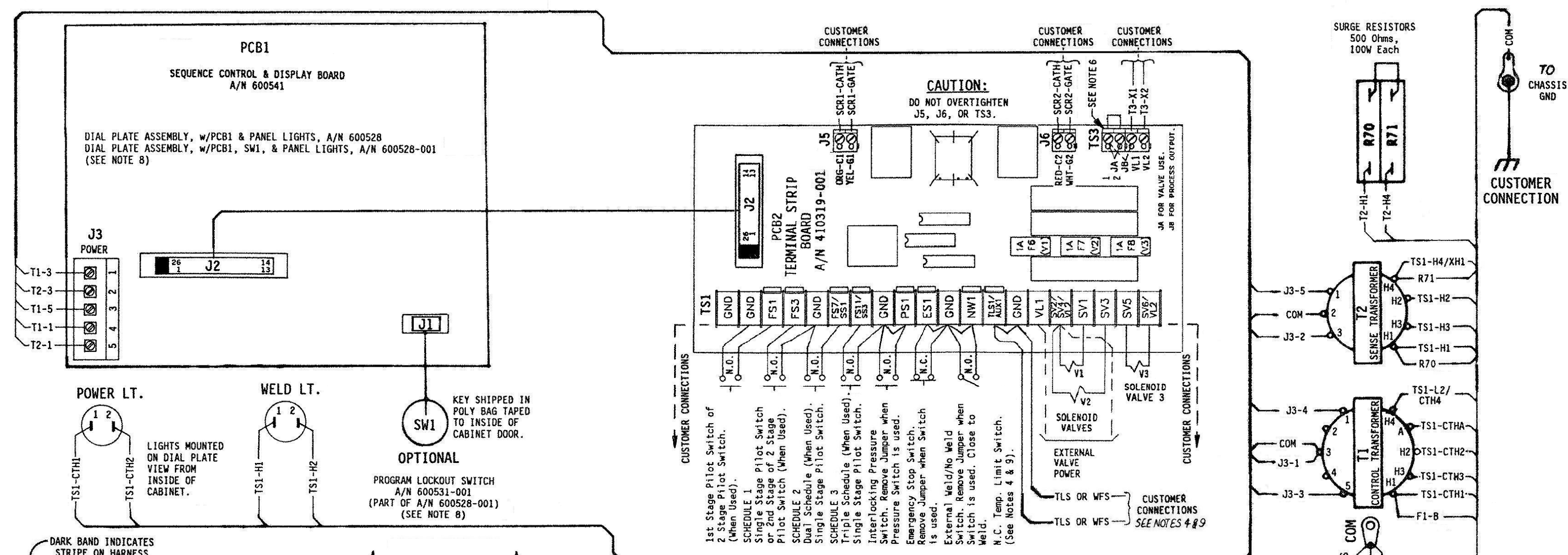
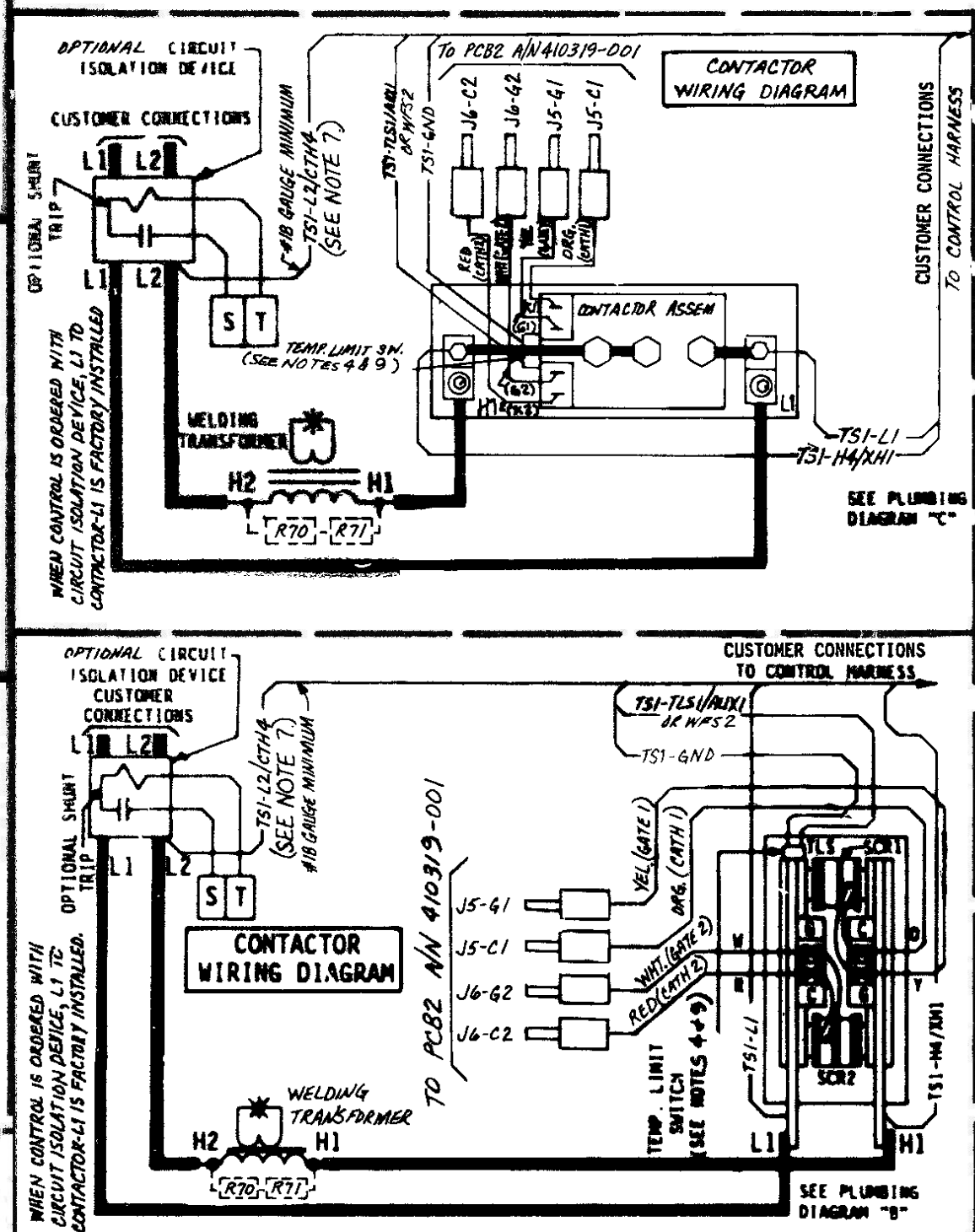
HAZARDOUS VOLTAGE FROM ONE OR MORE SOURCES
Turn off all voltage sources before touching any components. Electrical shock or flash will cause severe injury or death.
Do not remove or cover this sign.

⚠ CAUTION

WATER HOSE BURST HAZARD
Cooling water must be flowing when power is on. Water hose can burst and damage controls.
Do not remove or cover this sign.

CAUTION
Control Shipped Wired for 460 VAC
Unless otherwise specified - See Note 2

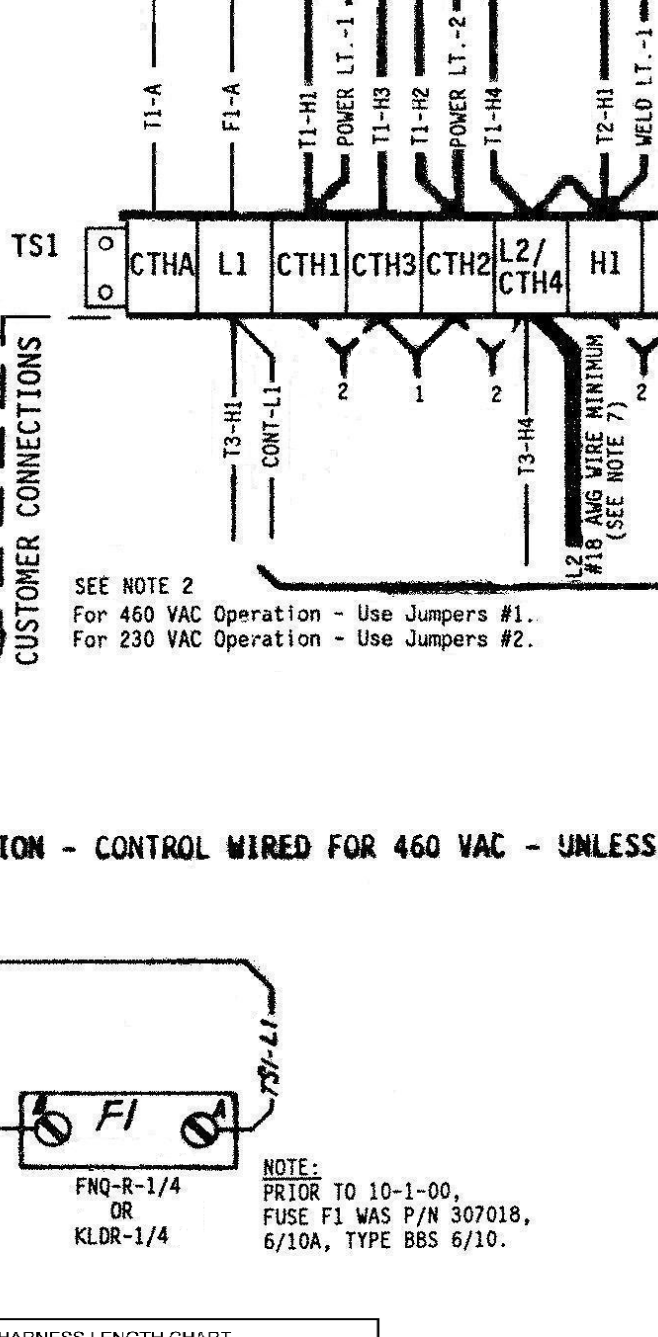
TYPICAL CONNECTION FOR CUSTOMER SUPPLIED CONTACTORS



J2-J3 HARNESS & J3 HARNESS LENGTH CHART

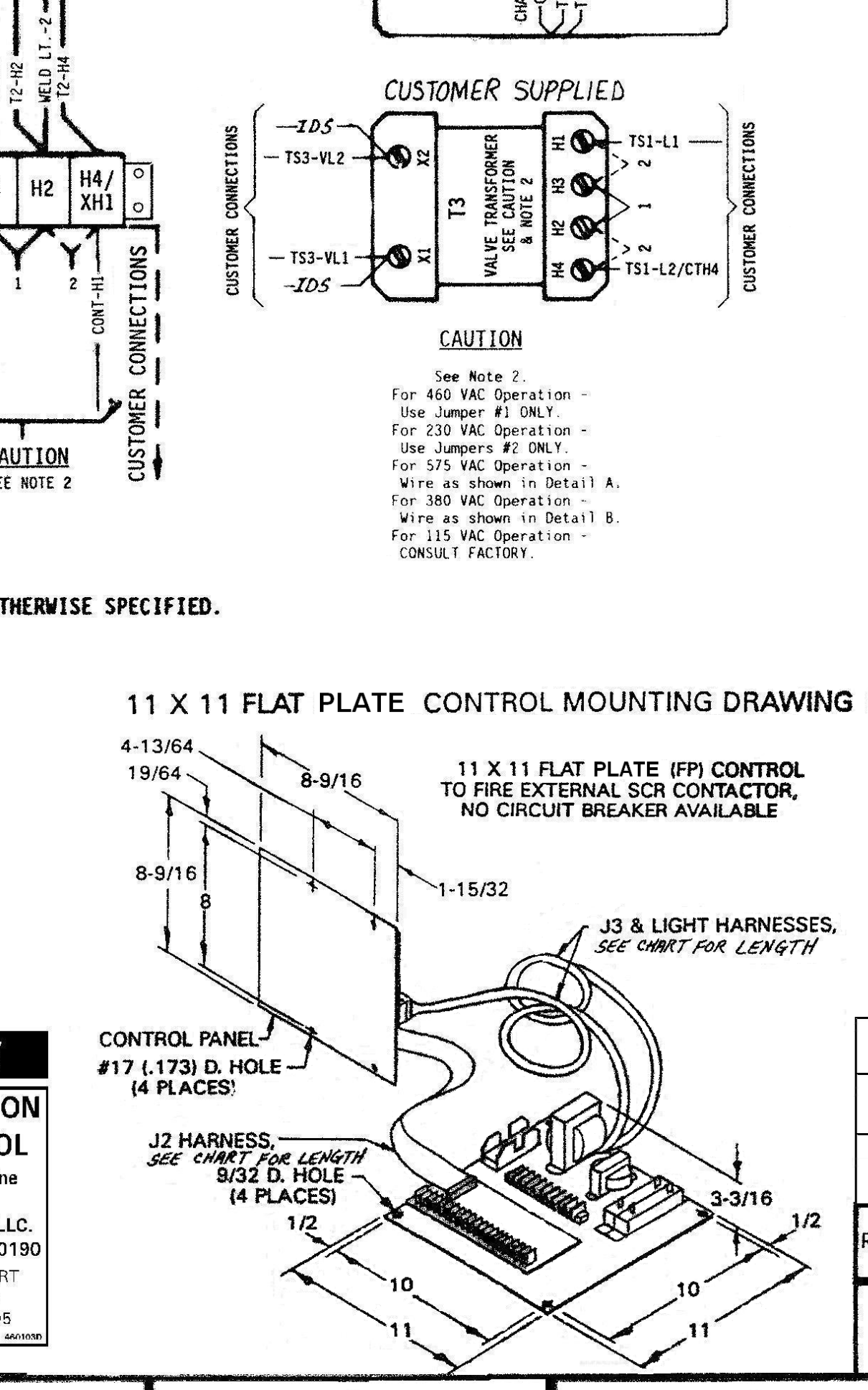
FPX FLAT PLATE DESIGNATION FOR J2-J3 HARNESS LENGTHS	J2-J3 HARNESS LENGTHS	J2-J3 HARNESS PART NUMBER	J3 HARNESS PART NUMBER
FP3	3 FEET LONG	322437	322438
FP4	4 FEET LONG	322437-001	322438-001
FP5	5 FEET LONG	322437-002	322438-002
FP6	6 FEET LONG	322437-003	322438-003
FP7	7 FEET LONG	322437-004	322438-004
FP8	8 FEET LONG	322437-005	322438-005
FP9	9 FEET LONG	322437-006	322438-006
FP10	10 FEET LONG	322437-007	322438-007
FP11	11 FEET LONG	322437-008	322438-008
FP12	12 FEET LONG	322437-009	322438-009

X = NUMBER DESIGNATIONS 3 THRU 10 OF THE "FPX" REFERENCE FOR J2-J3 HARNESS LENGTHS.
NOTE: HARNESS LENGTHS ARE MEASURED FROM THE EDGE OF FLAT PLATE TO SEQUENCE CONTROL DISPLAY BOARD.



NOTICE
FOR SERVICE ON THIS CONTROL

Contact Your Machine Dealer Or
ENTRON CONTROLS LLC.
DIRECTLY: (864) 416-0190
601 HIGH TECH COURT
GREER, SC 29650
FAX# (864) 416-0195



REV	AUTH	DESCRIPTION	DRWN BY	CHK'D BY	DATE
C	DCS 4/11/12	IN HARNESS CHART: ADDED FP18 HARNESSES 322437-008 & 322438-015. ADDED MODEL "EN1000-FP (SCR)SP."	DCS 7/17/00	DCS 4/11/12	
B	ECN 2615	IN HARNESS CHART: ADDED FP10 HARNESSES 322437-007 & 322438-014. IN DRWG: ADDED MODEL "EN1000-FP (SCR)SP."	DEC 9/13/98	DEC 7/17/00	
A	ECN 2503	IN DETAIL B: TERM STRIP DESIG. "TS1-CTH4" WAS "TS1-L2/CTH4" & "TS1-H1L2" WAS "TS1-H1" IN DRWG: ADDED REF NOTES TO ADD EITHER T3 LABEL 400105 OR 400201 TO POLY BAG.	DEC 9/13/98	DEC 7/17/00	

PARTS LIST - CONTROL SECTION 421210-017C

QTY	DESIG.	PART NO.	DESCRIPTION
1		600528	Assem. Dial Plate, w/Sw. Assem., EN1000, Consisting of: Assem., Dial Plate, w/Sw. Assem. & Keylock, EN1000, Consisting of:
1	PCB1	600541	Assem., Switch, Sequence Control & Display Board
1	SW1	600531-001	Assem., Switch, Keylock, Momentary, SPST
1		540251	Illustrated Panel, Dial Plate, EN1000
1		515104	Panel, Display Window, Red Filter, EN1000
1		565003	Hole Plug, 3/4" Diam., Black
1	J2-J3	SEE CHART	Assem., Harness, Ctrl Bd. to Term. Bd.
1	J3	SEE CHART	Assem., Harness, Power, EN1000-FPX(SCR)
1	PWR.LT.	305001	Lamp, Neon, Red, 230V
1	WLD.LT.	305002	Lamp, Neon, Clear, 230V

PARTS LIST - CONTACTOR SECTION

QTY	DESIG.	PART NO.	DESCRIPTION
1	TSS	335067	Terminal Strip, 10 Pin, (Part of J3 Harness)
1	T1	310001	Transformer, Control, (Part of J3 Harness)
1	T2	310002	Transformer, Sense, (Part of J3 Harness)
2	R70,71	225016	Resistor, Power, Surge, 500 Ohm, 100W
1	F1	300010	Fuseholder, 1 Pole, Mini, 600V
1	F1	307024	Fuse, Control, 1/4A, FRG-R-1/4 or KLD8-1/4
1	F1	307022	Fuse, 1 Amp, Slow Blow, ZAG, (Part of 410319-001)
1	(R70,71)	325024	Assem., Wire, Surge Resistor, 16 Ga., Black
1	PCB2	410319-001	Assem., PCB, Terminal Strip Board, EN1000
1		510245	Assem., 11 x 11 Flat Plate, EN1000-FPX(SCR)
1		440450-001	Mounting Detail, 11 x 11 Flat Plate
1		700120	Manual, EN1000
1		421183	Single Diagram, EN1000-Series Controls
1		421210-017	Wiring Diagram, EN1000-FPX(SCR) Cabinet

Optional Keylock when specified by customer. See Note 8. Pack Key in Poly Bag 900148 & attach to Door w/Yellow Tape 900118.
See Drawing #440450-001 for mounting detail of Flat Plate (FP).
Type one (1) Poly Bag P/N 900148 to Flat Plate using Tape P/N 900118 & include the following in the bag:
4 Ea. 6-32 x 1/4 PHMS, Ph11, Black 557004
4 Ea. 6-32 x 1/4 PHMS, Ph11, Britte 557003
4 Ea. 6-32 x 1/4 A/F Hex Nut 557018
4 Ea. 6-32 x 1/2 Standoffs 555031
1 Ea. Label, Danger, Hazardous Voltage... 460142/RM156103C
1 Ea. Label, Danger, Voltage and Flash Hazard... 460143/RM156103A
1 Ea. Label, Voltage Hazard...Earth Gnd... 460144/RM156103D
1 Ea. Label, Caution, Water Hose Burst Hazard... 460145/RM156103E
1 Ea. Label, Warning, Hazardous Voltage... 460146/RM156103B
1 Ea. Label, Caution, Do not Pinch Wires... 460170
1 Ea. Resistor, Power, 2000 Ohm, 10W (for 575 VAC) 600048
1 Ea. Jumper, TSI, (for 380 VAC) 325225

When Control is wired for either 230/460/575 VAC Operation, add quantity one (1) TSI Label P/N 460201, for 380 VAC Operation.
When Control is wired for 380 VAC Operation, add quantity one (1) TSI Label 460105 for 230/460/575 VAC Operation.

MANUFACTURING INSTRUCTIONS:
See Drawing #600526 for Layout/Assembly of Front Panel.
See Drawing 600554 for Mechanical Assembly Instructions.
See Drawing 440454 for Packing Instructions.

ORIGINAL RELEASE

REV AUTH DESCRIPTION DRWN BY CHK'D BY DATE

ENTRON

SCALE DATE DRAWN BY CHK'D BY APPROVED BY

TOLERANCE UNLESS SPECIFIED

ANGLES: ± 1°

DECIMALS: ± .010

FRACTIONS: ± 1/64

DATE 4/11/12 DCS

WIRING DIAGRAM, EN1000-FPX(SCR), 11 X 11 FLAT PLATE, WIRED FOR SELECTABLE 230/380/480/575 VAC OPERATION, (For FPX Designation, See Chart)

REV AUTH DESCRIPTION DRWN BY CHK'D BY DATE

EN1000-FPX(SCR) EN1000-FP7(SCR) EN1000-FPX(SCR)SP ©

EN1000-FP4(SCR) EN1000-FP8(SCR) EN1000-FP5(SCR) EN1000-FP16(SCR) Ⓜ

EN1000-FP6(SCR)

NEXT ASSM/USED ON DRAWING NUMBER REV

421210-017C