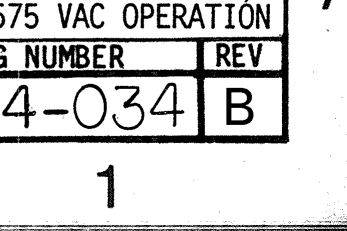
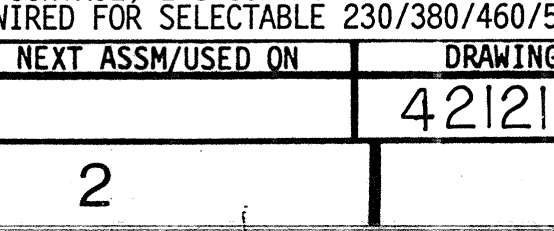
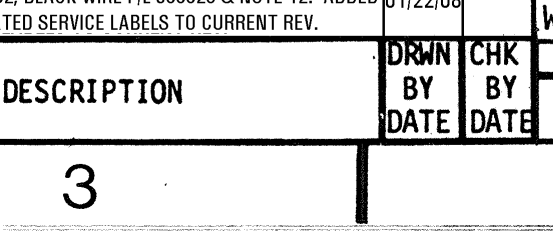
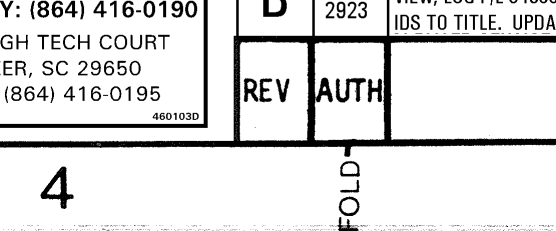
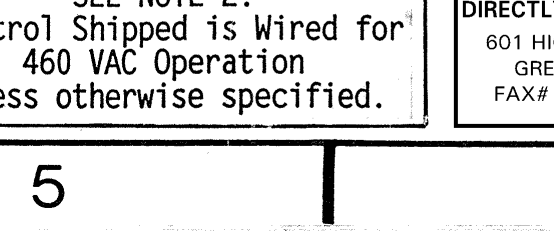
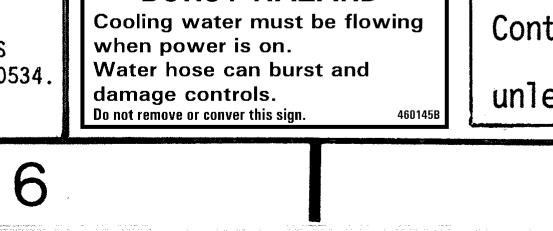
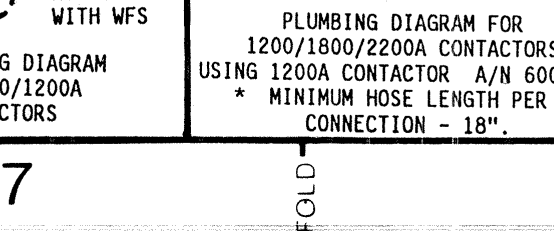
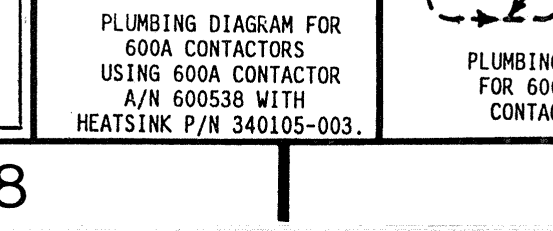
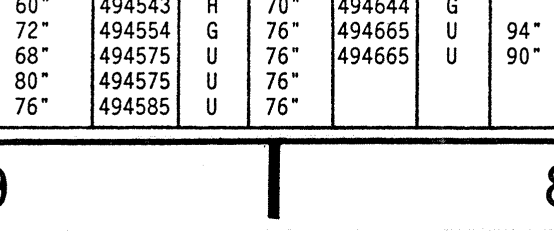
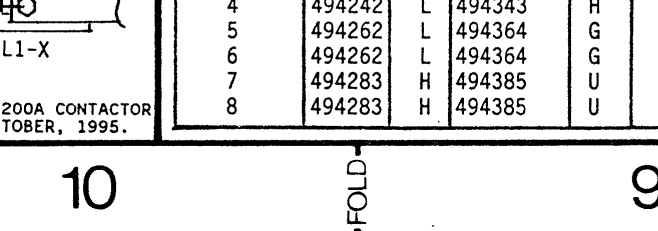
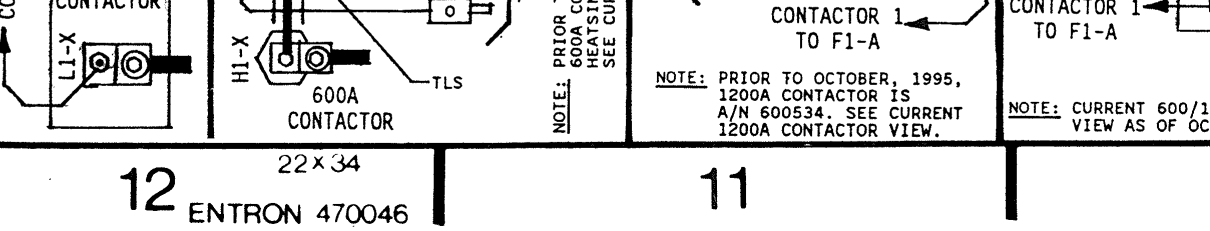
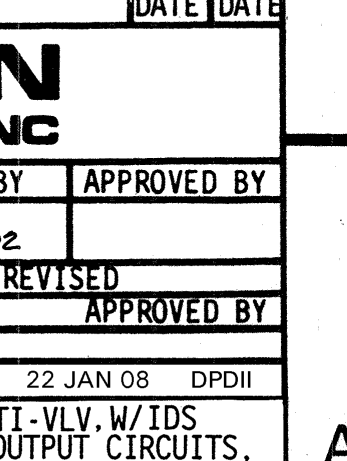
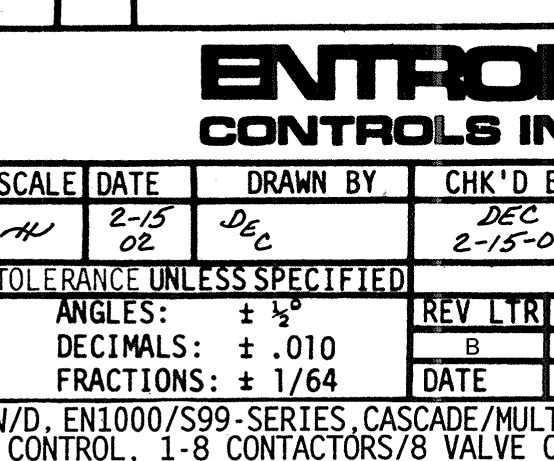
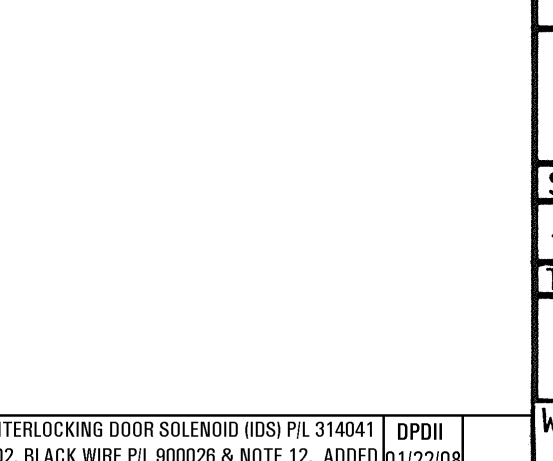
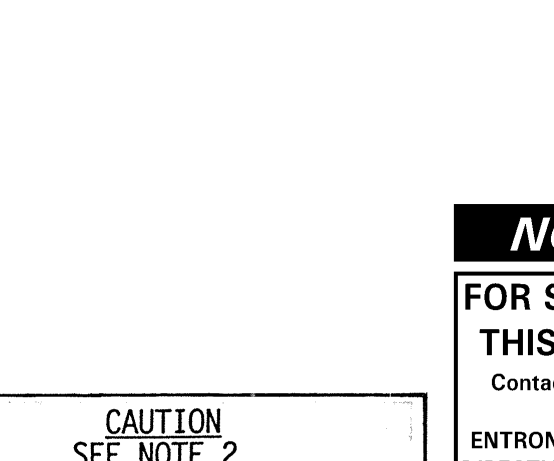
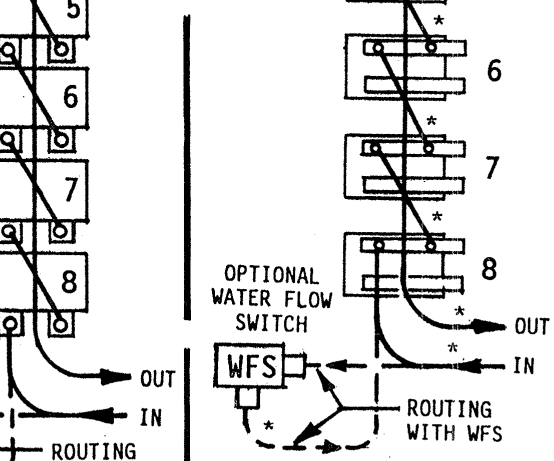
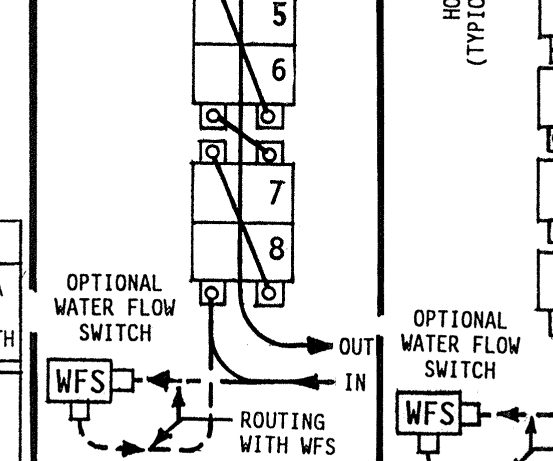
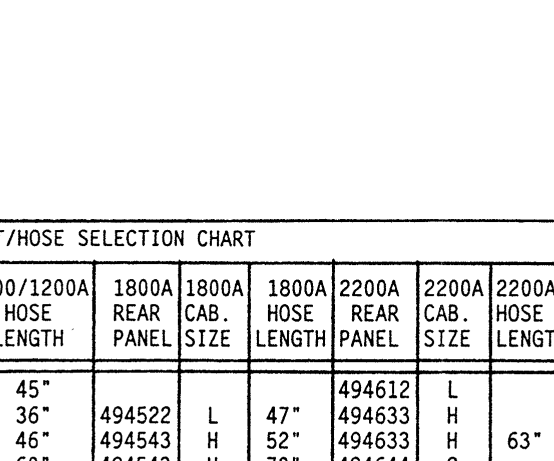
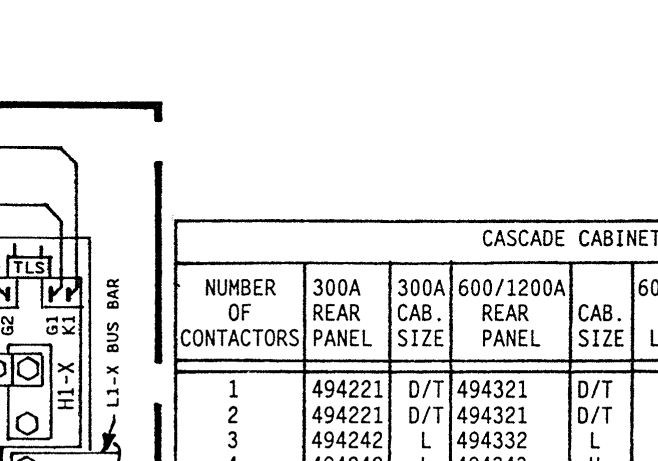
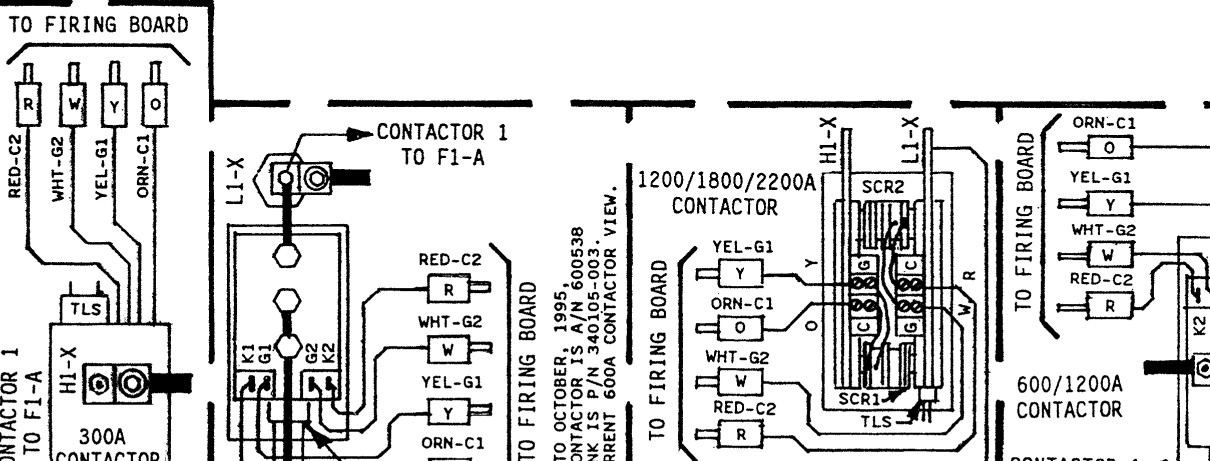
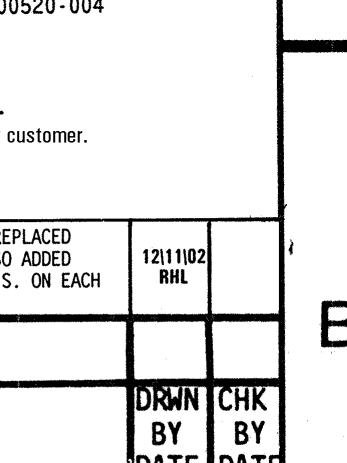
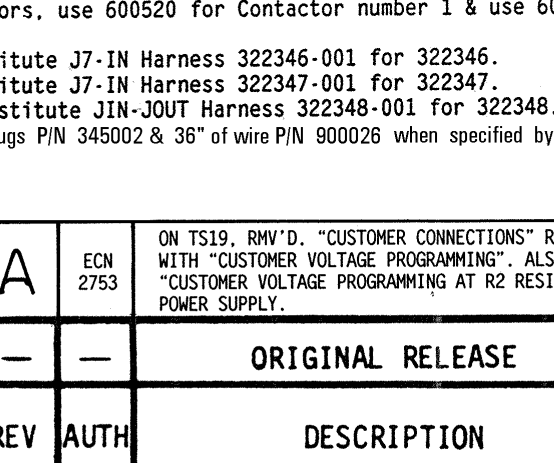
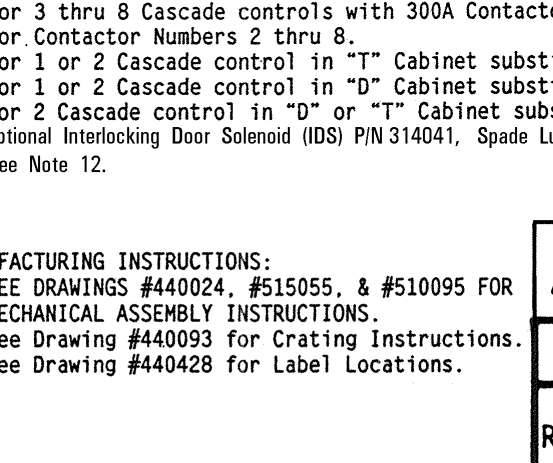
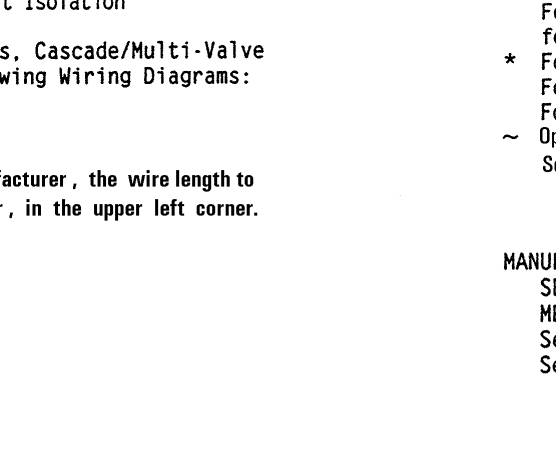
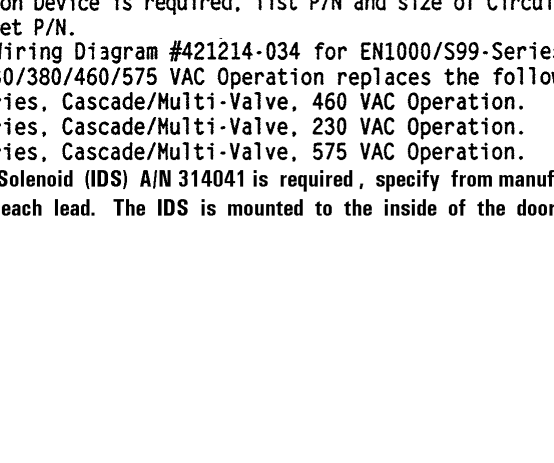
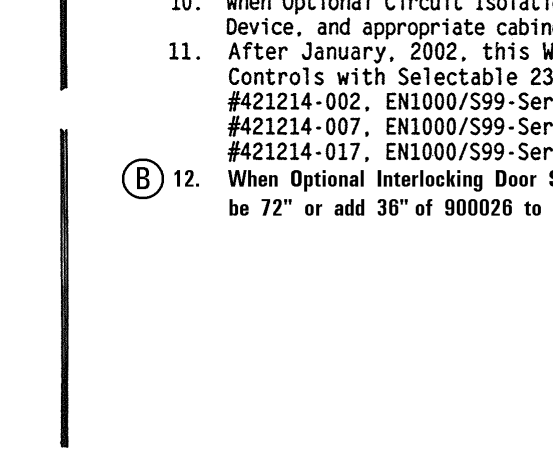
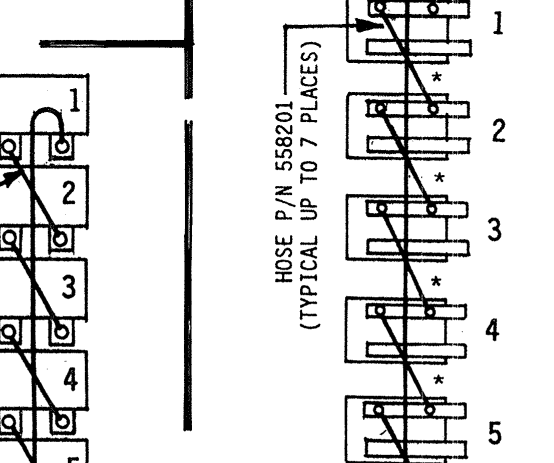
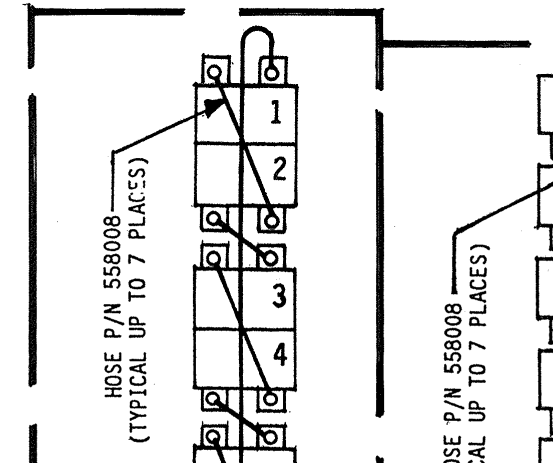
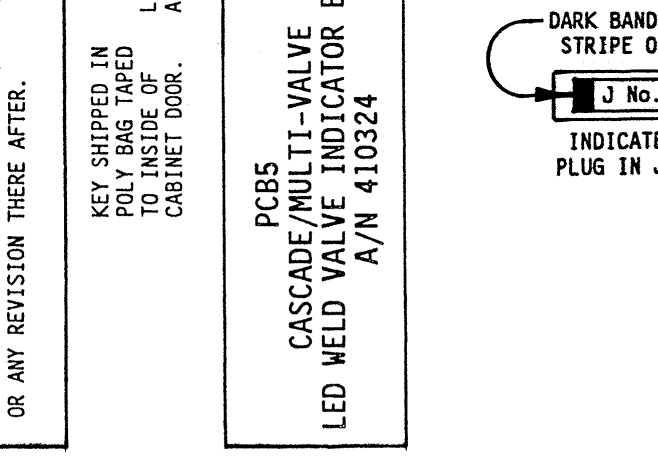
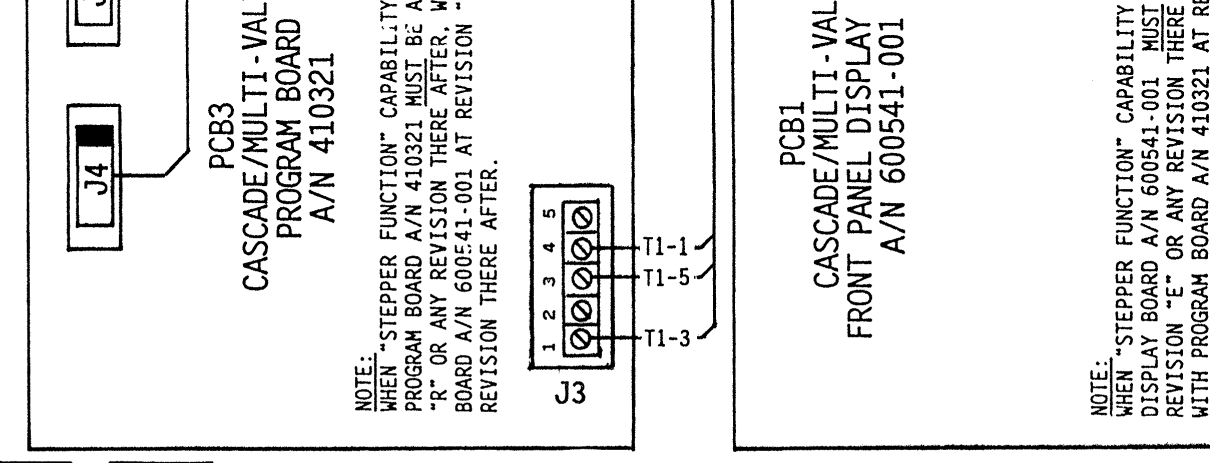
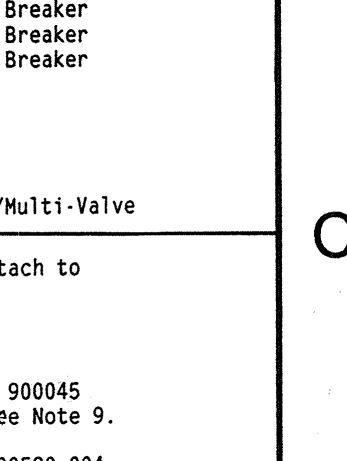
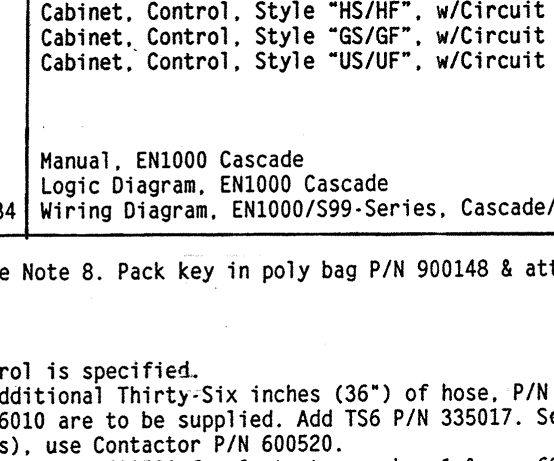
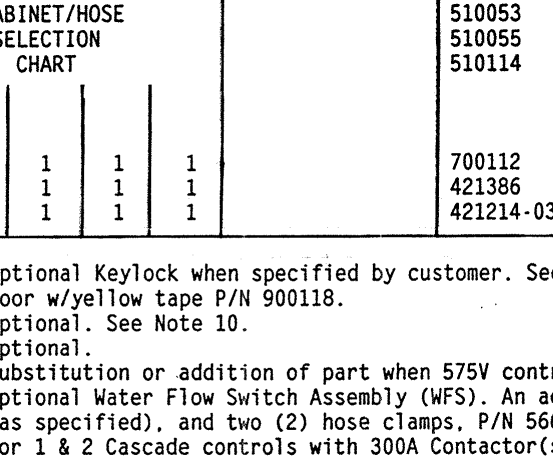
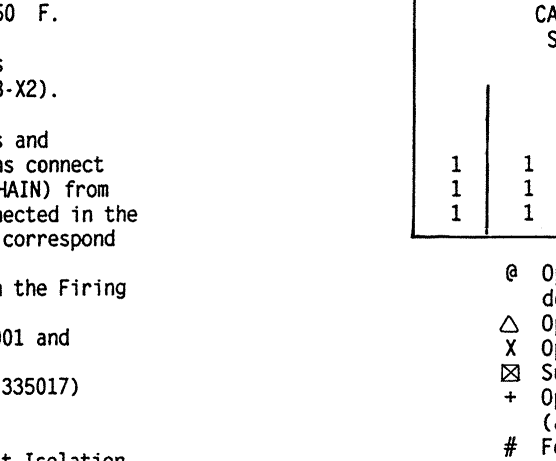
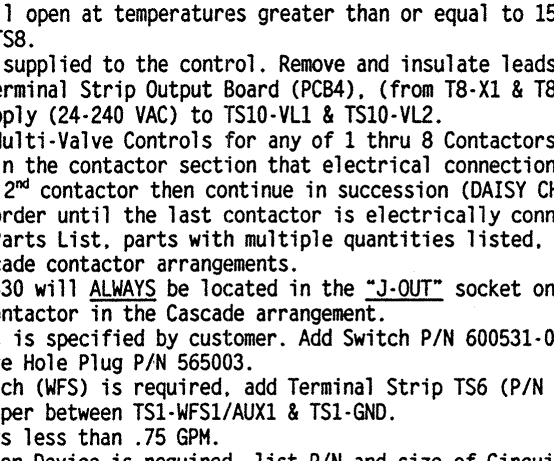
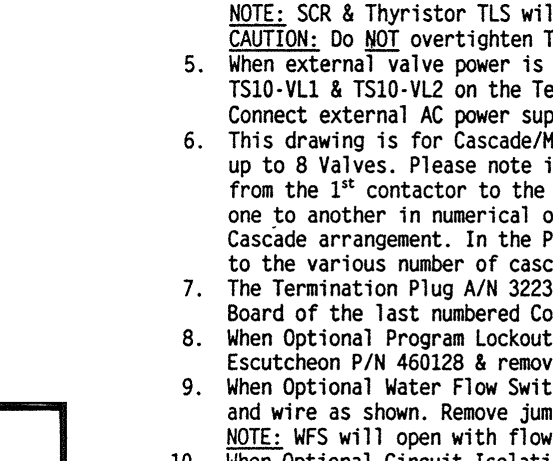
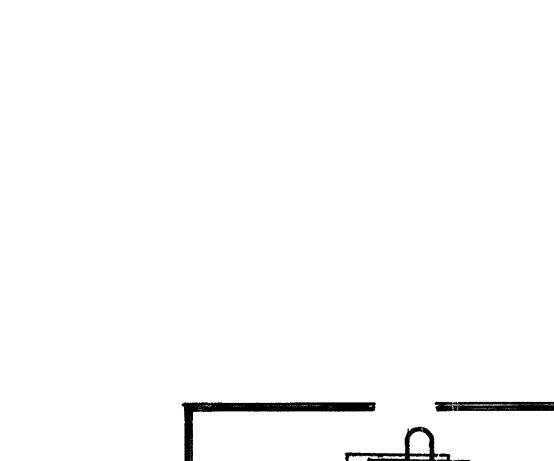
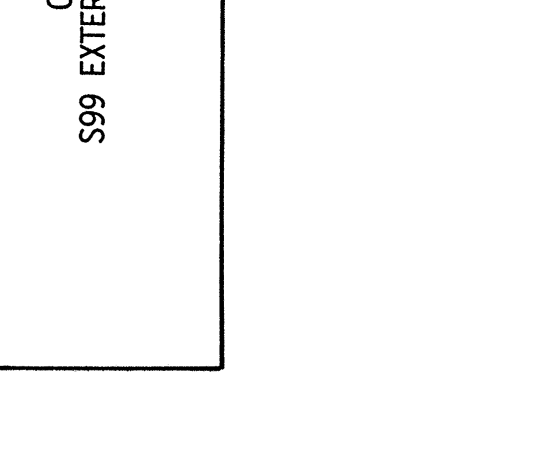
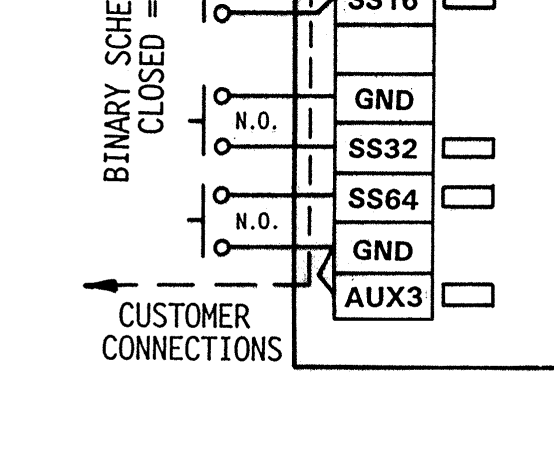
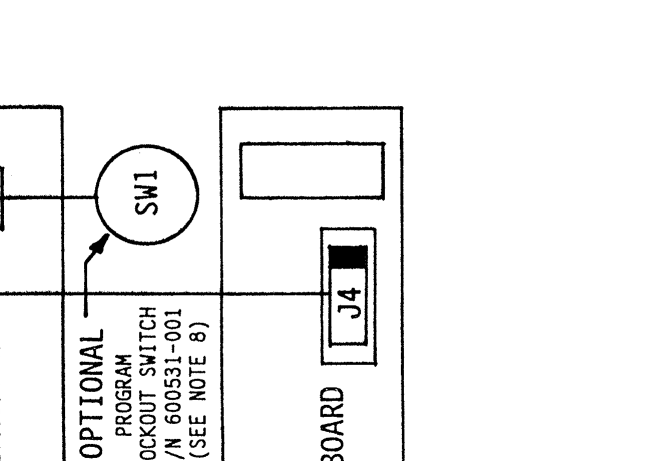
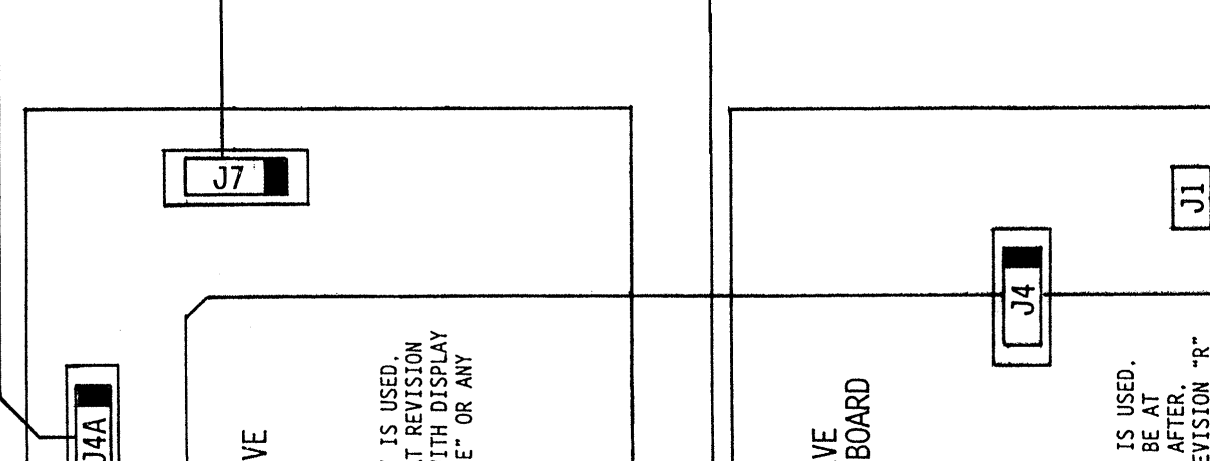
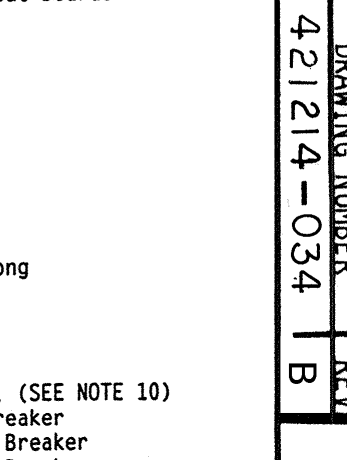
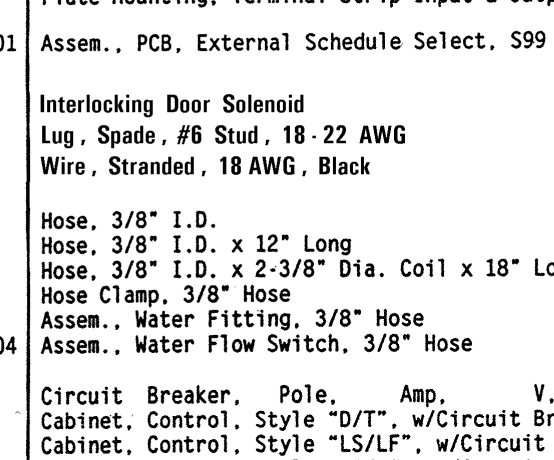
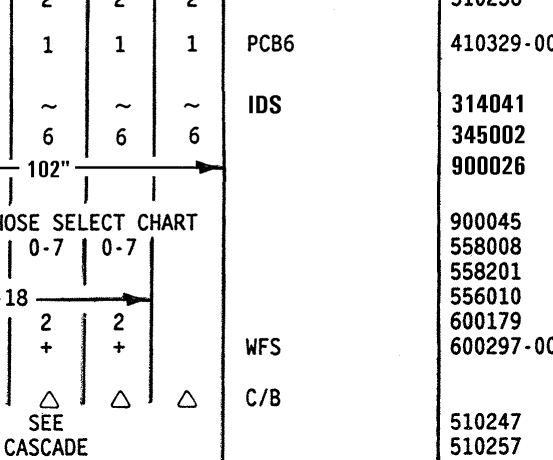
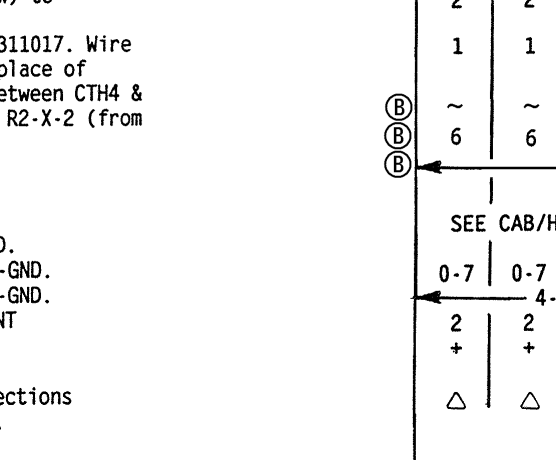
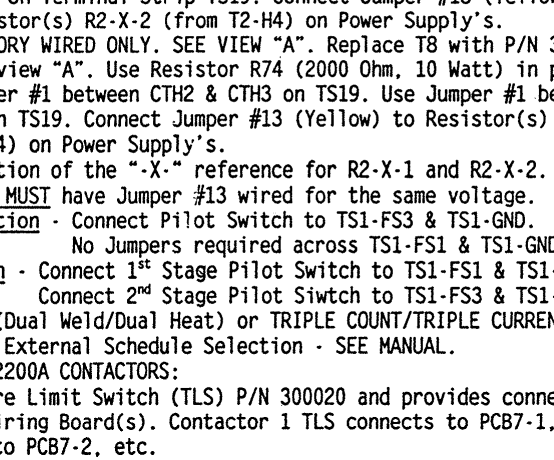
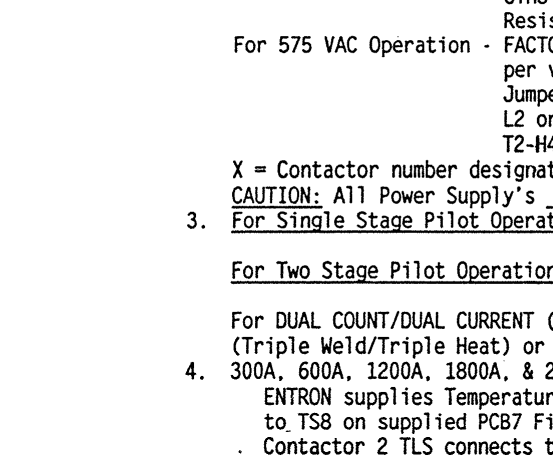
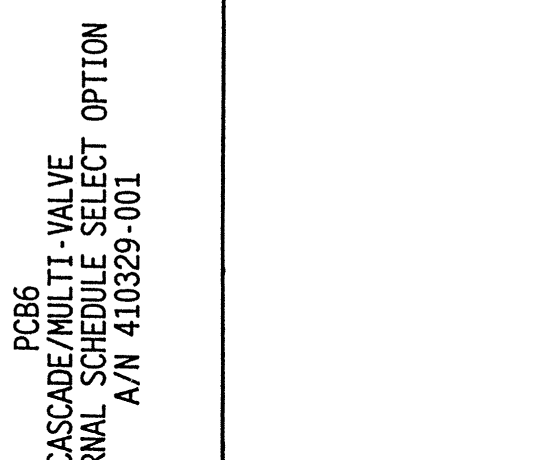
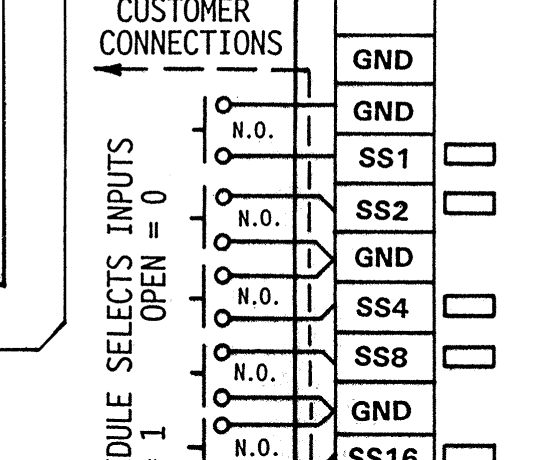
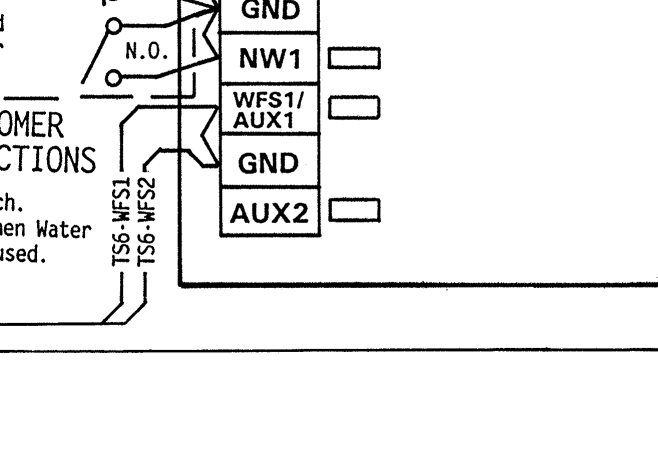
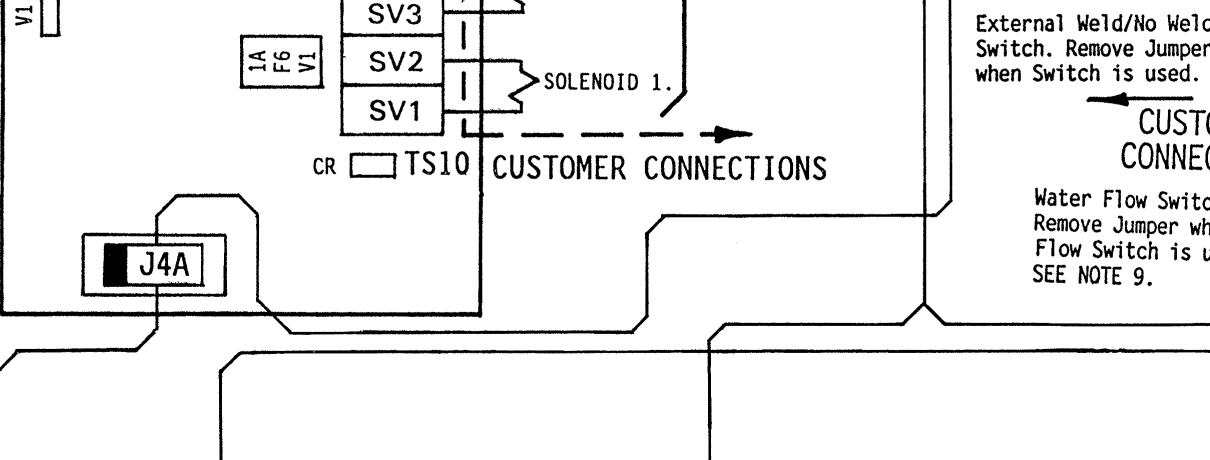
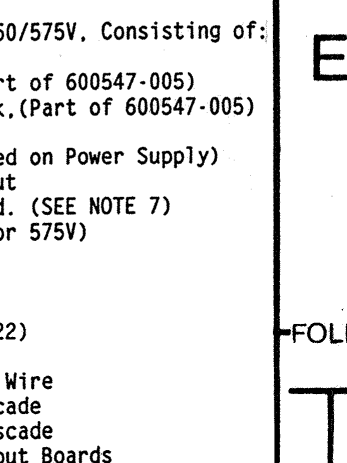
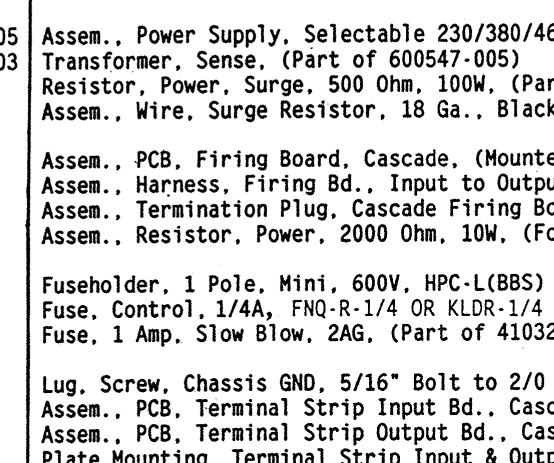
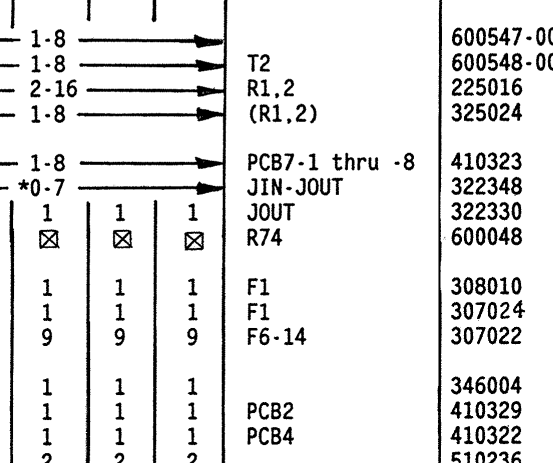
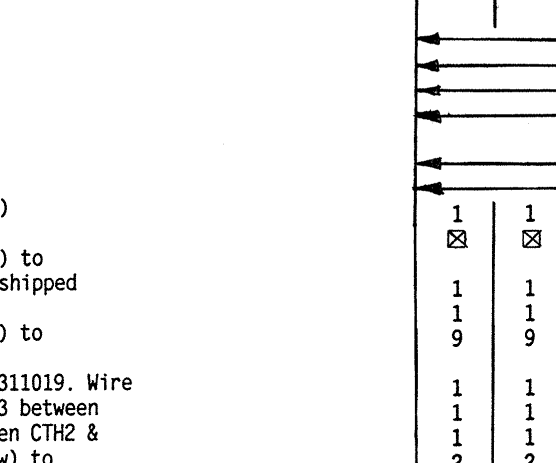
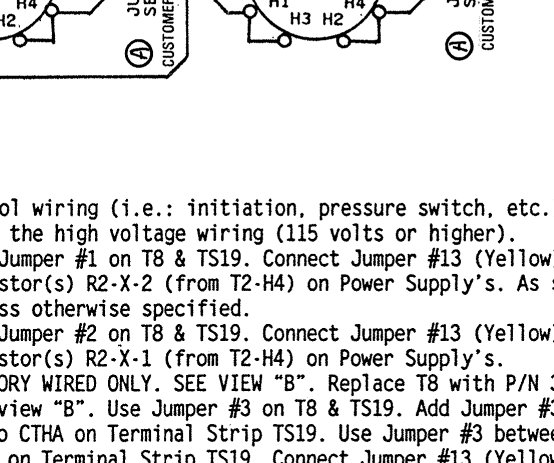
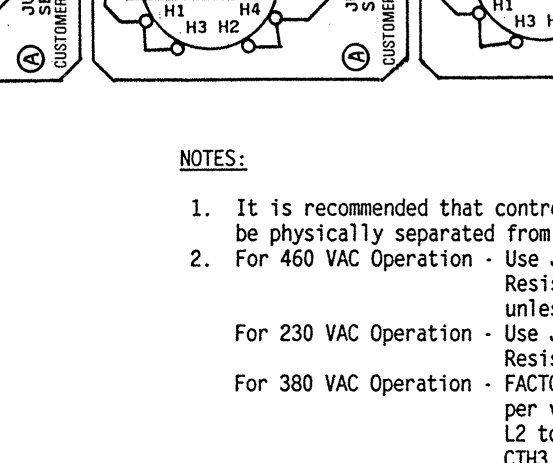
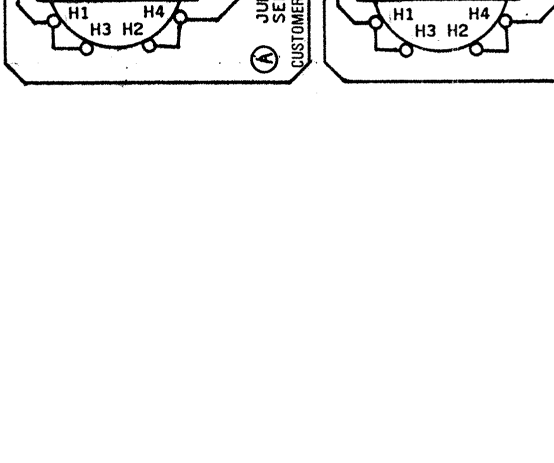
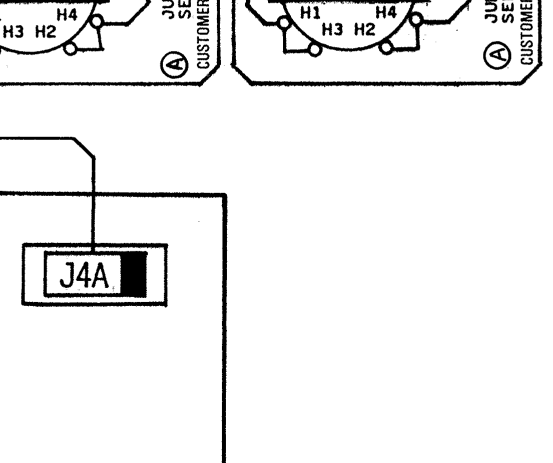
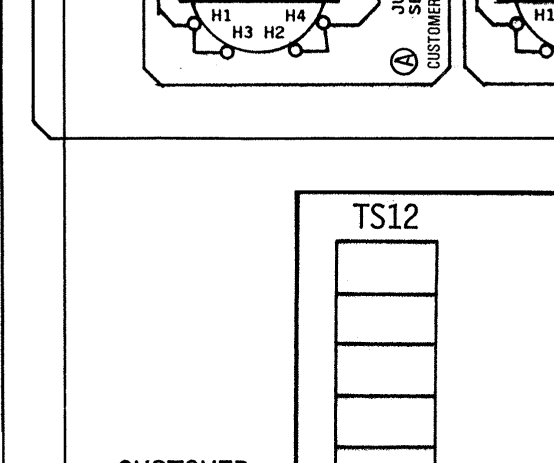
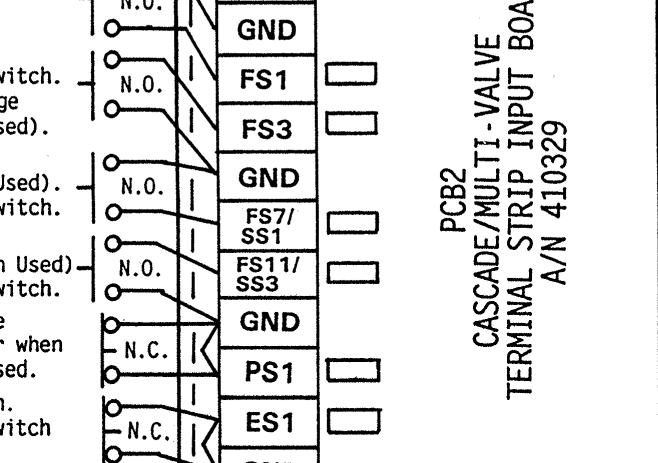
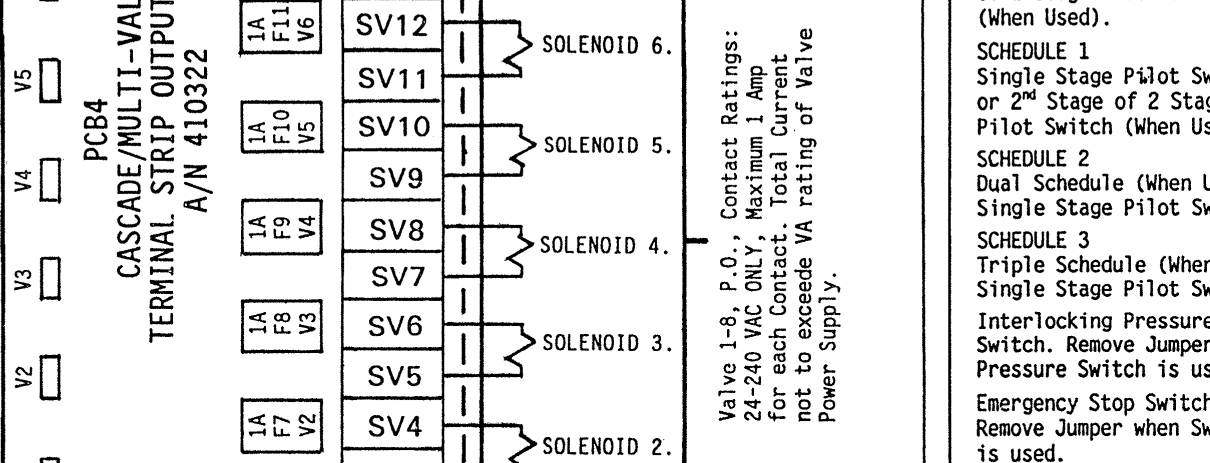
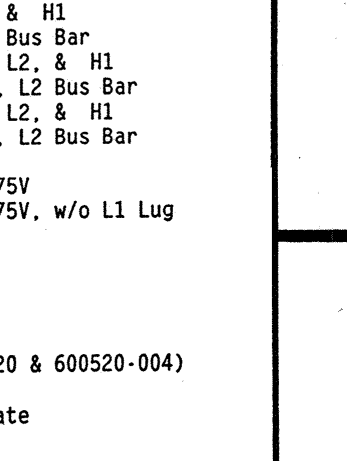
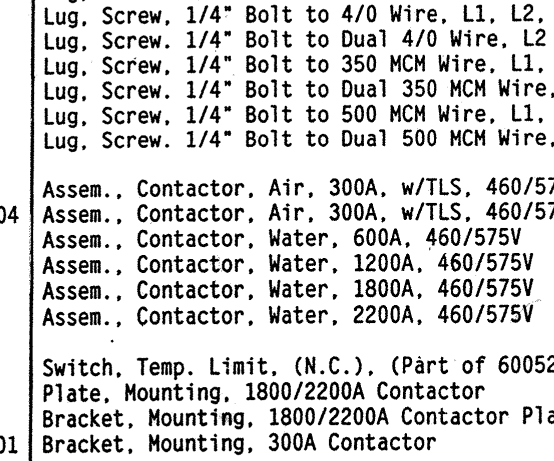
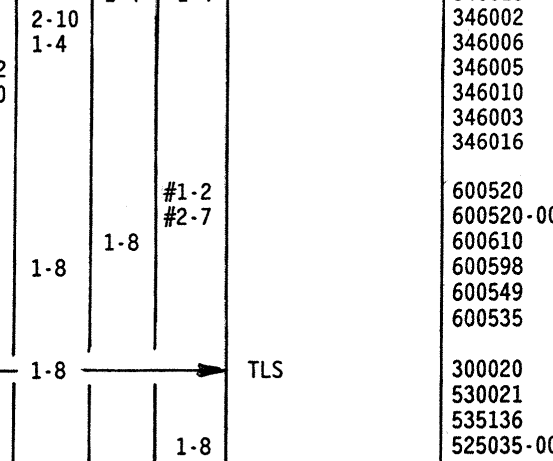
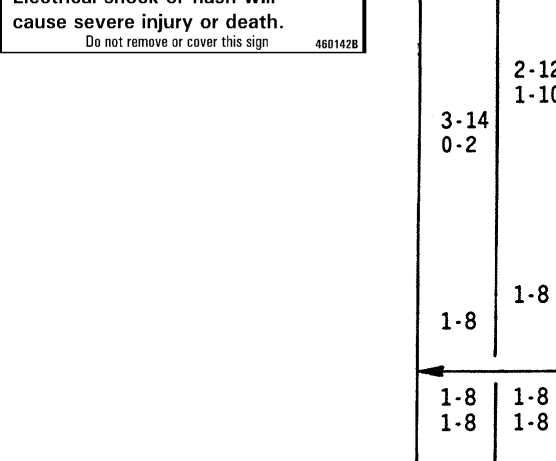
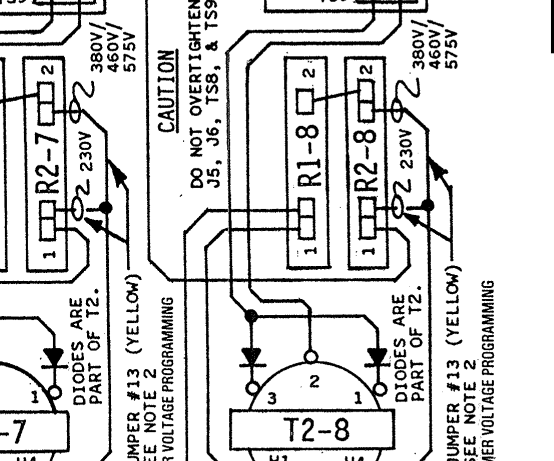
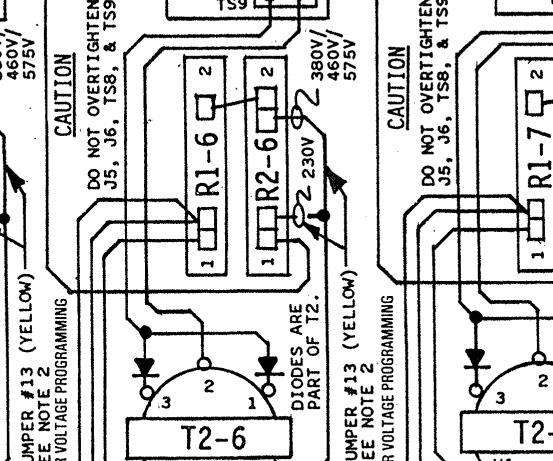
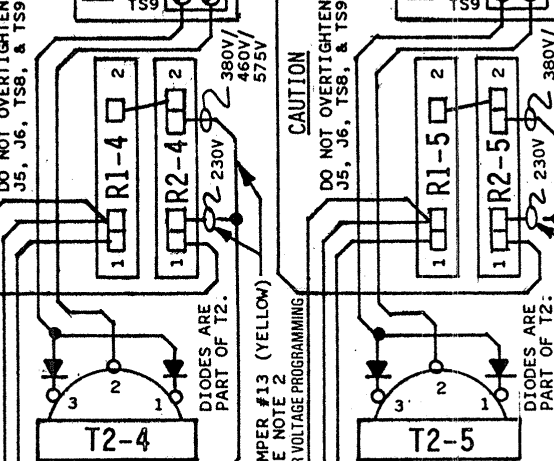
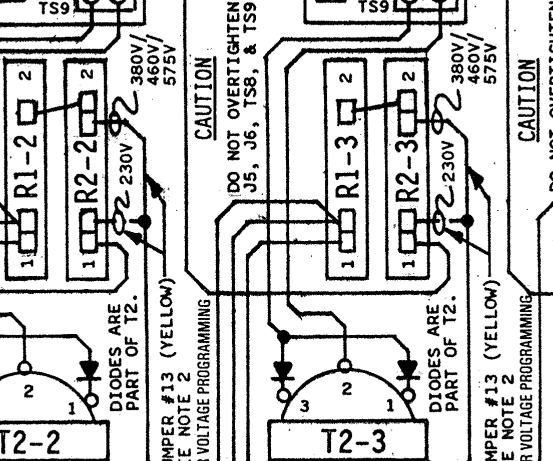
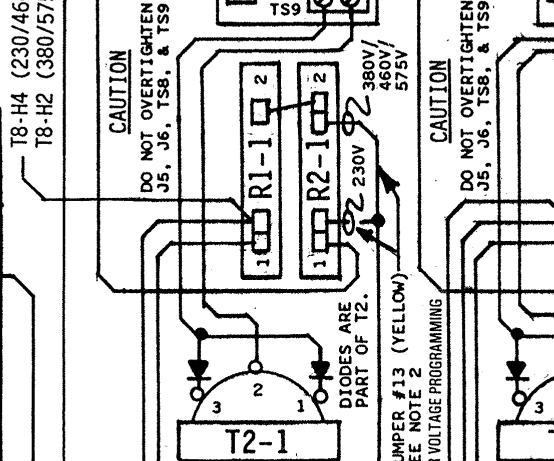
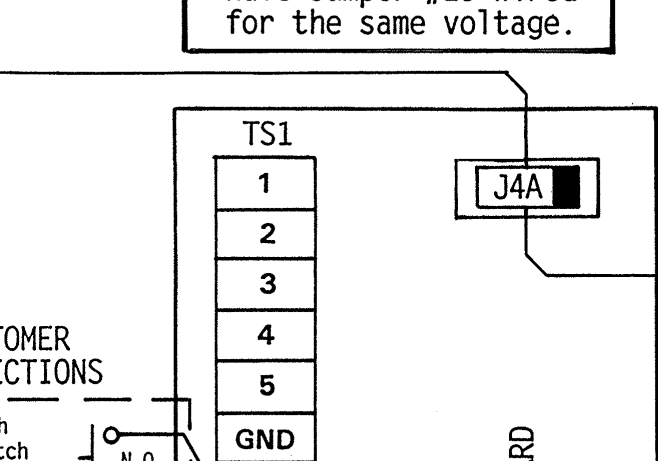
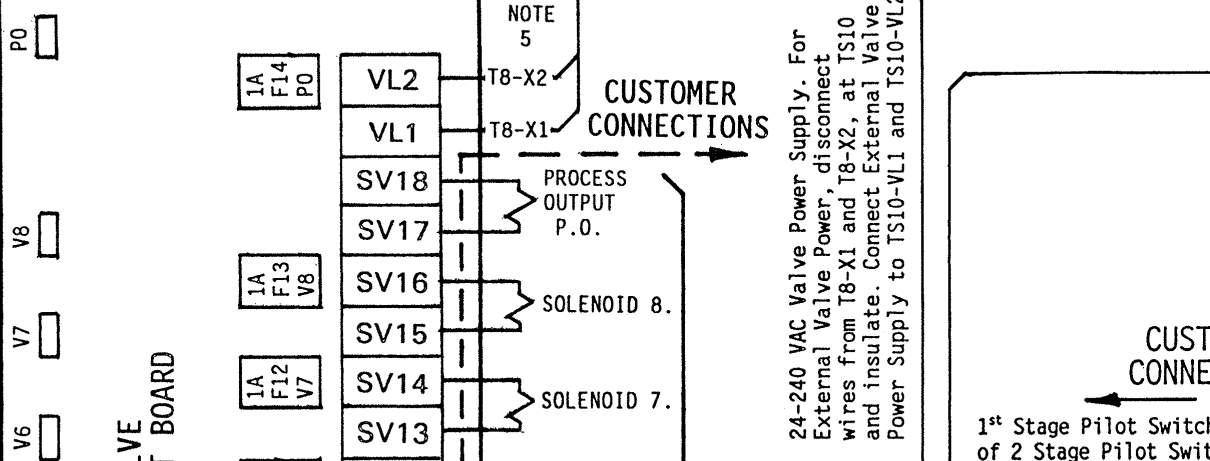
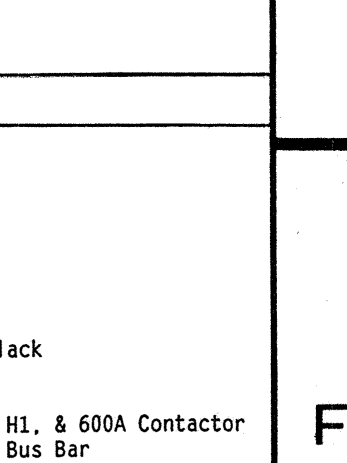
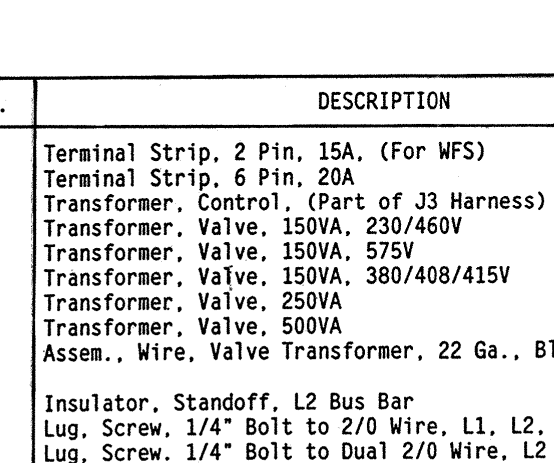
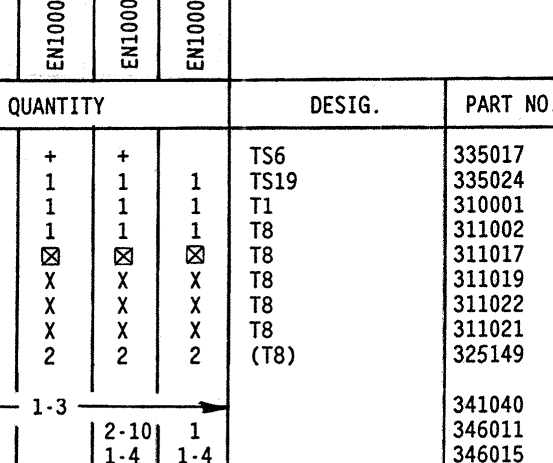
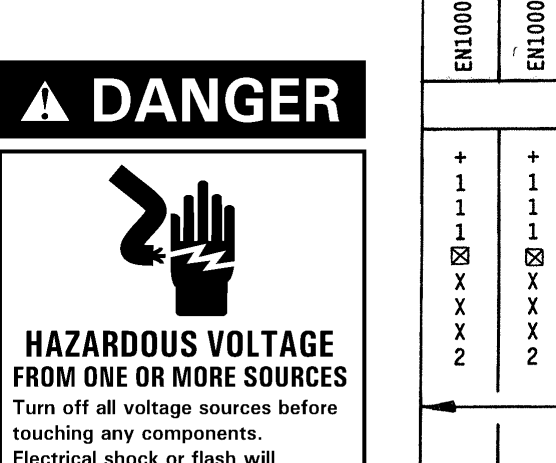
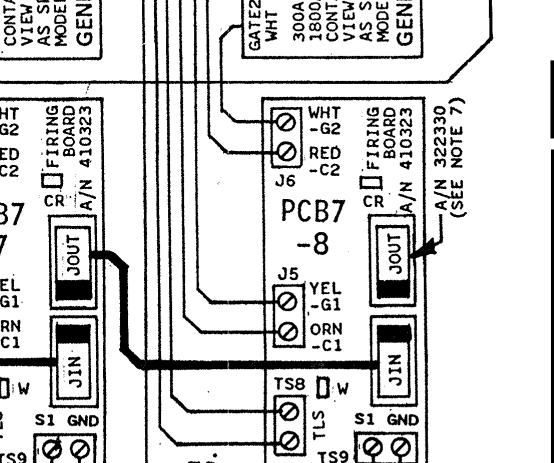
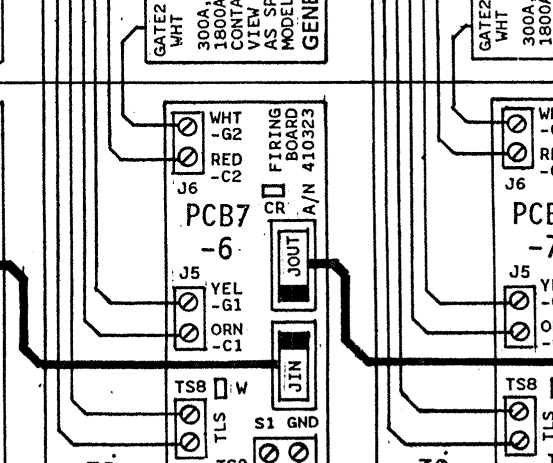
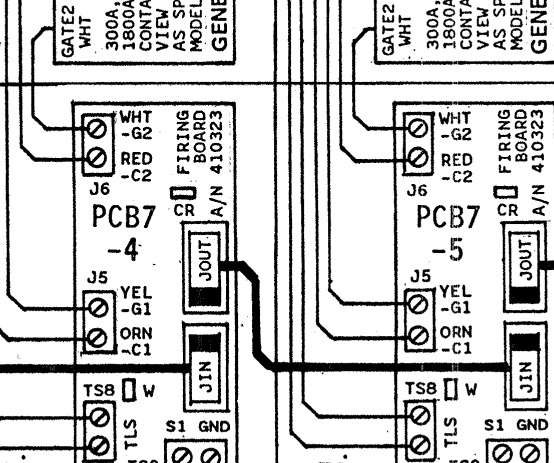
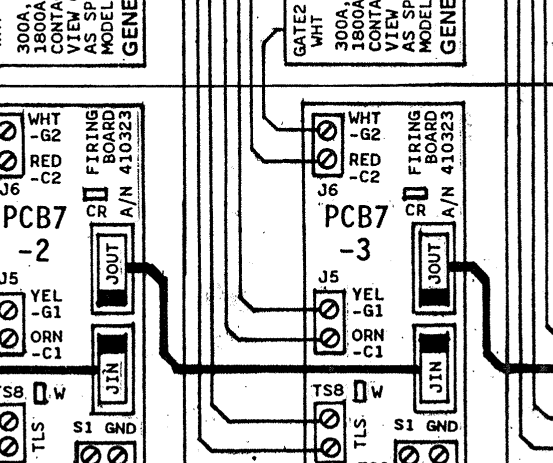
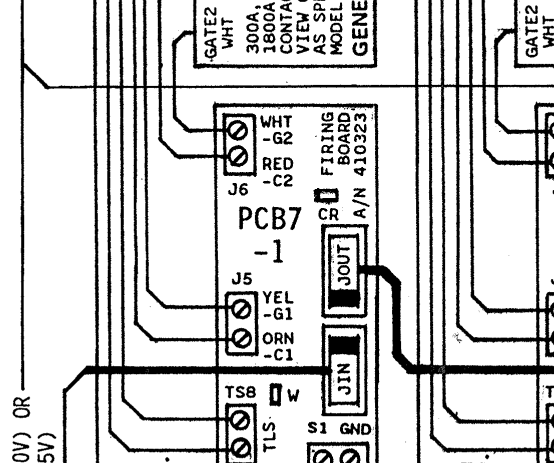
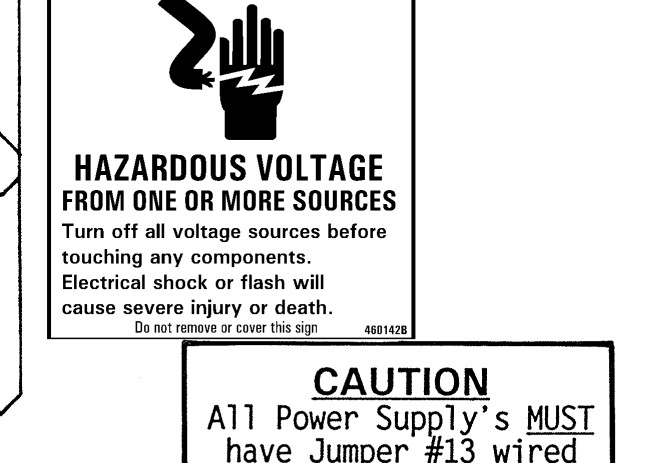
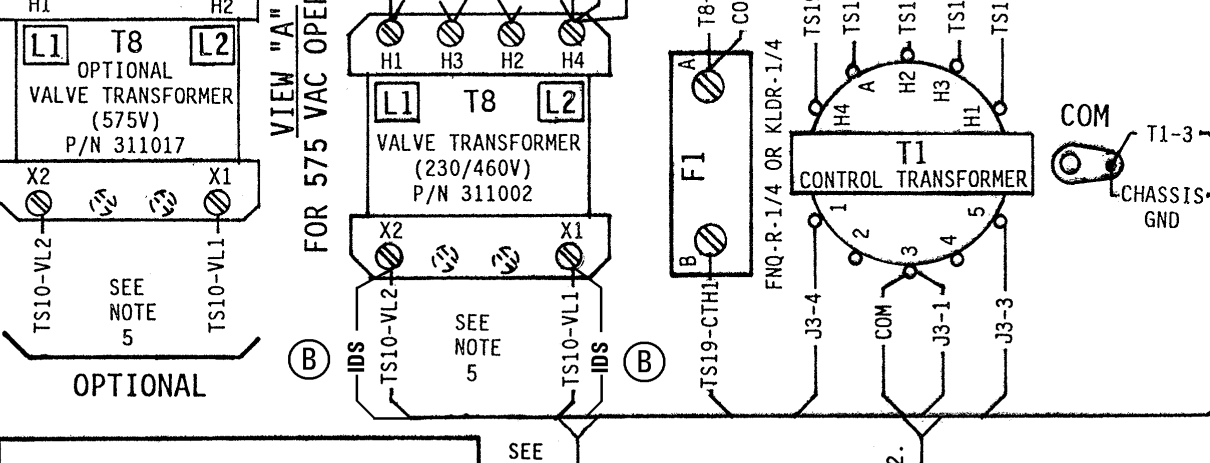
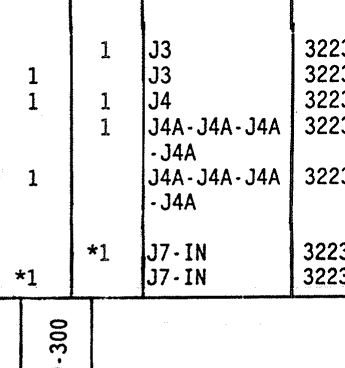
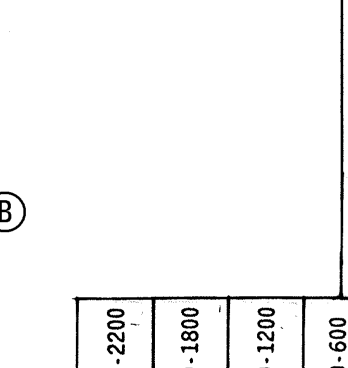
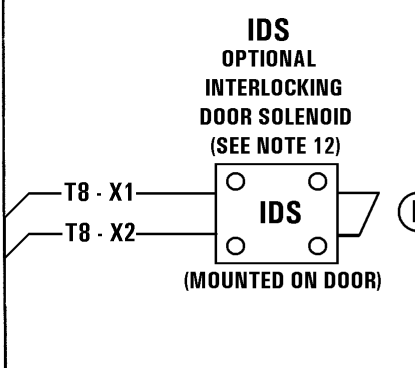
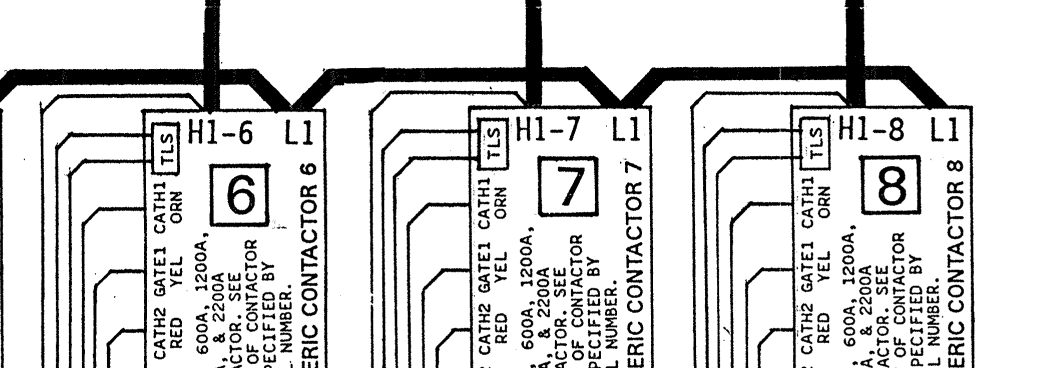
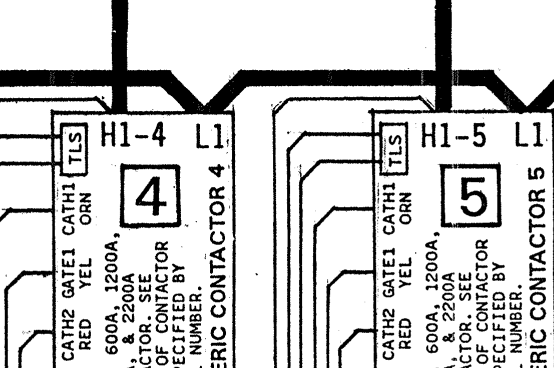
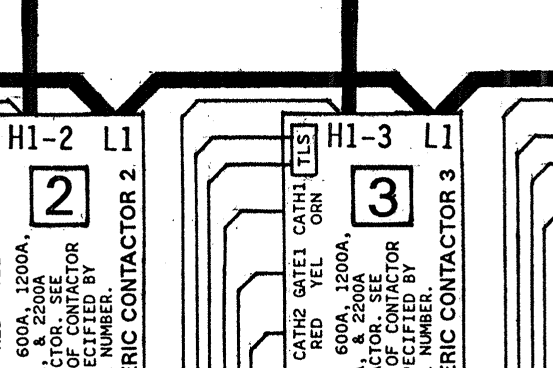
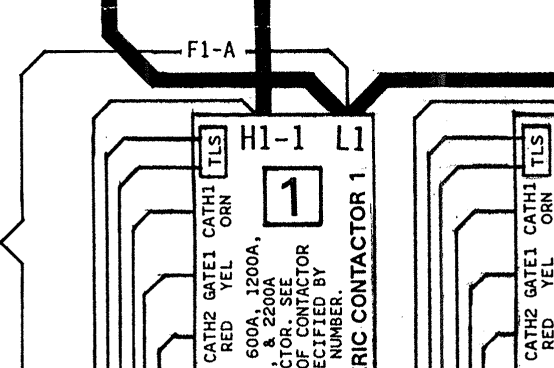
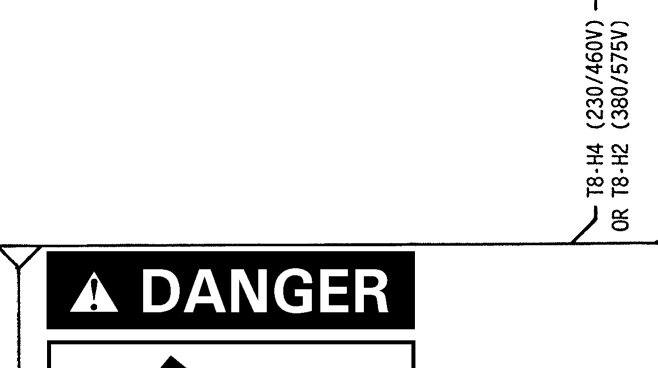
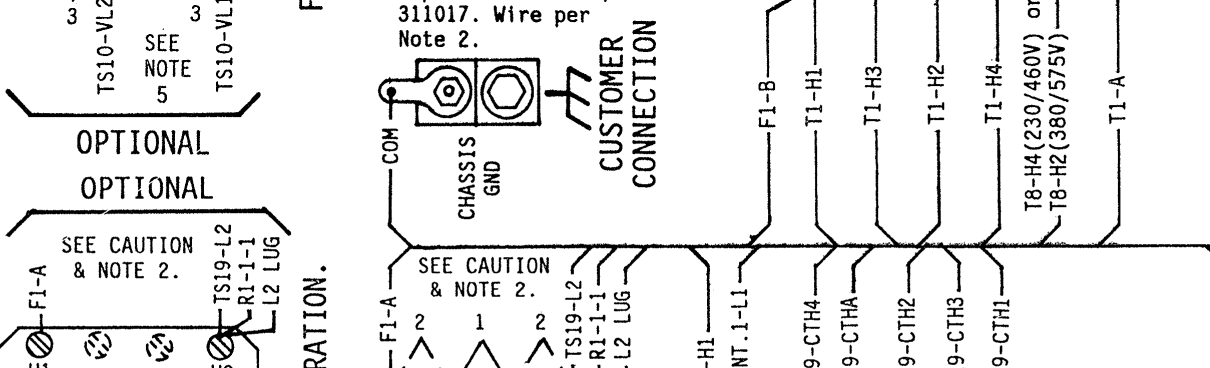
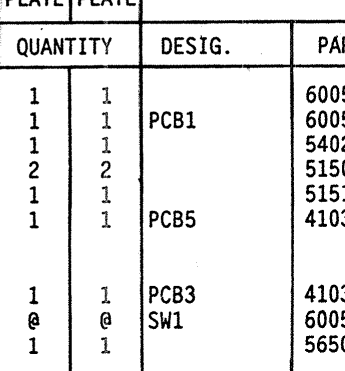
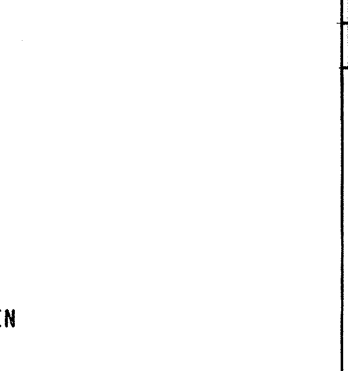
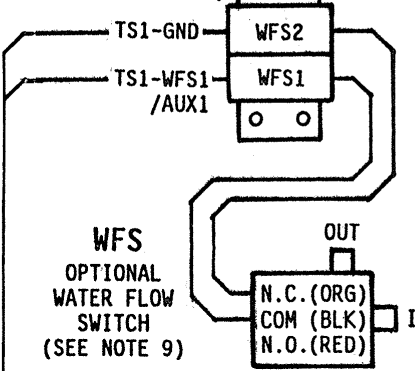
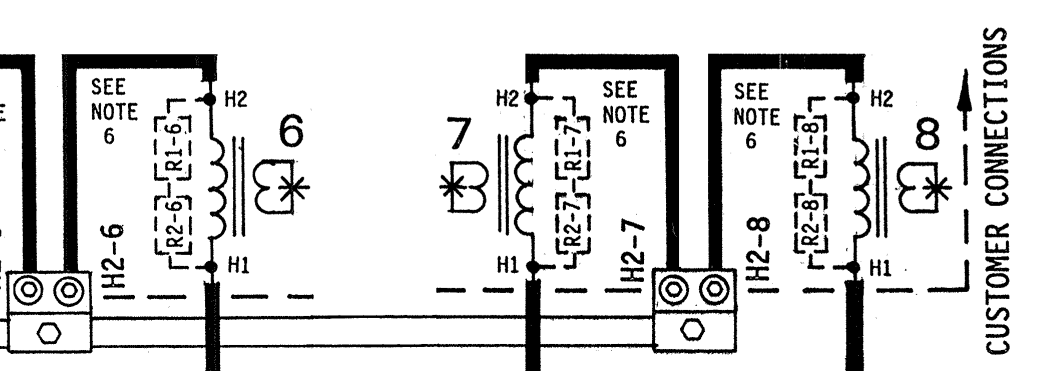
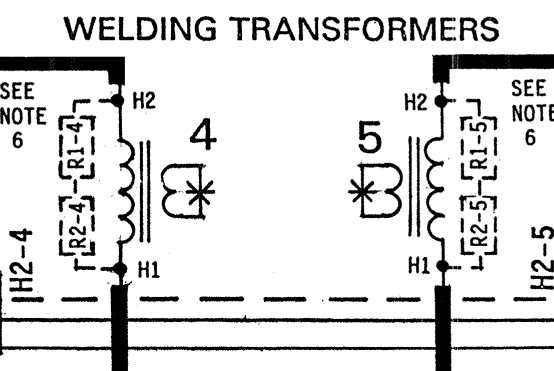
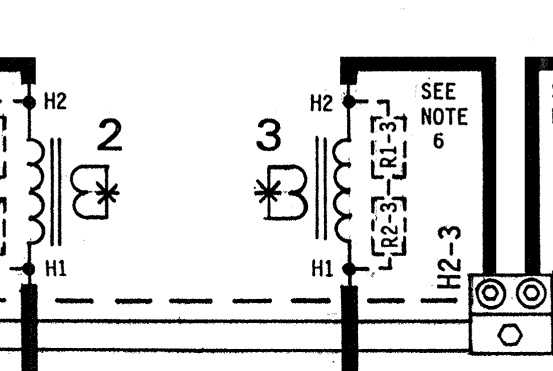
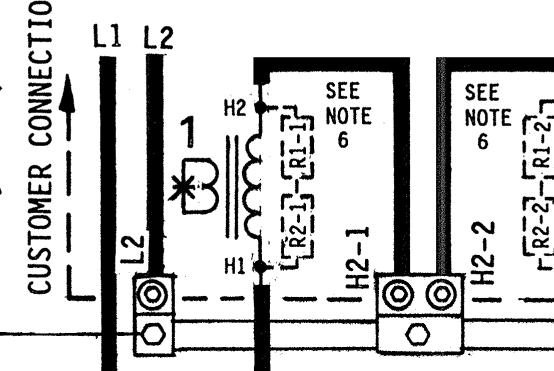
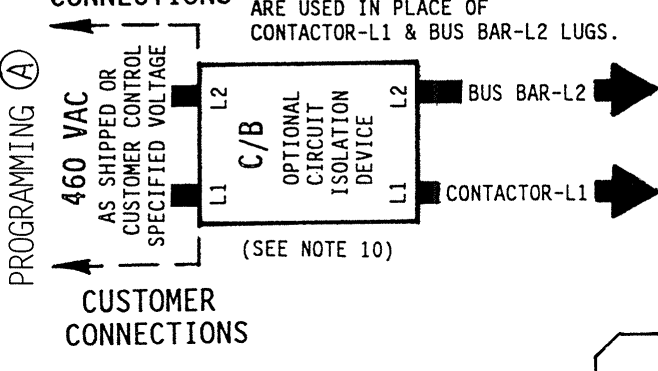
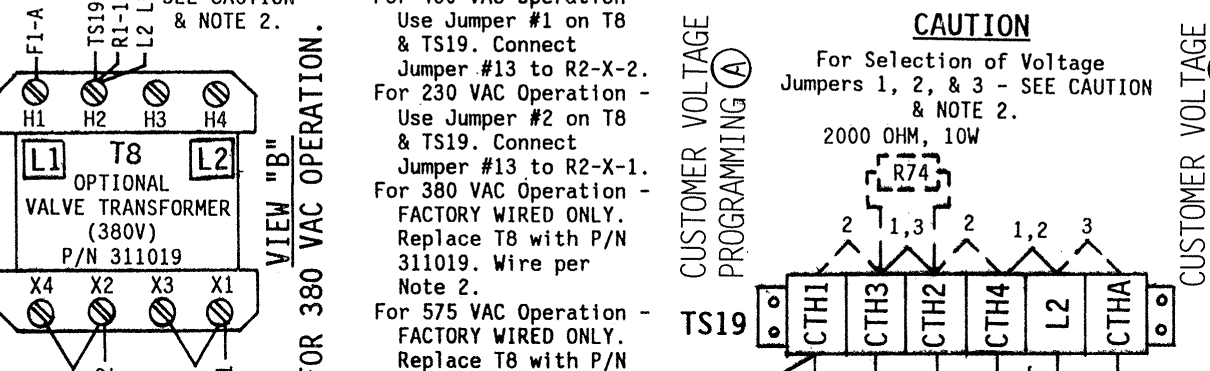


CAUTION - READ MANUAL & ALL NOTES BEFORE INSTALLING OR OPERATING CONTROL - SEE NOTE 1.
NO CIRCUIT CALIBRATION OR ADJUSTMENT EVER REQUIRED.



DANGER HAZARDOUS VOLTAGE FROM ONE OR MORE SOURCES

DANGER HAZARDOUS VOLTAGE FROM ONE OR MORE SOURCES

CAUTION All Power Supply's MUST have Jumper #13 wired for the same voltage.

- NOTES: 1. It is recommended that control wiring... 2. For 460 VAC operation... 3. For 380 VAC operation... 4. For 575 VAC operation...

SCHEDULE 1 Single Stage Pilot Switch... SCHEDULE 2 Dual Schedule... SCHEDULE 3 Triple Schedule...

Water Flow Switch. Remove Jumper when Water Flow Switch is used. SEE NOTE 9.

EXTERNAL WELD/NO WELD SWITCH. Remove Jumper when Switch is used.

EXTERNAL WELD/NO WELD SWITCH. Remove Jumper when Switch is used.

EXTERNAL WELD/NO WELD SWITCH. Remove Jumper when Switch is used.

EXTERNAL WELD/NO WELD SWITCH. Remove Jumper when Switch is used.

EXTERNAL WELD/NO WELD SWITCH. Remove Jumper when Switch is used.

EXTERNAL WELD/NO WELD SWITCH. Remove Jumper when Switch is used.

EXTERNAL WELD/NO WELD SWITCH. Remove Jumper when Switch is used.

EXTERNAL WELD/NO WELD SWITCH. Remove Jumper when Switch is used.

EXTERNAL WELD/NO WELD SWITCH. Remove Jumper when Switch is used.

EXTERNAL WELD/NO WELD SWITCH. Remove Jumper when Switch is used.

EXTERNAL WELD/NO WELD SWITCH. Remove Jumper when Switch is used.

EXTERNAL WELD/NO WELD SWITCH. Remove Jumper when Switch is used.

EXTERNAL WELD/NO WELD SWITCH. Remove Jumper when Switch is used.

EXTERNAL WELD/NO WELD SWITCH. Remove Jumper when Switch is used.

HAZARDOUS VOLTAGE FROM ONE OR MORE SOURCES

HAZARDOUS VOLTAGE FROM ONE OR MORE SOURCES

HAZARDOUS VOLTAGE FROM ONE OR MORE SOURCES

HAZARDOUS VOLTAGE FROM ONE OR MORE SOURCES

HAZARDOUS VOLTAGE FROM ONE OR MORE SOURCES

HAZARDOUS VOLTAGE FROM ONE OR MORE SOURCES

HAZARDOUS VOLTAGE FROM ONE OR MORE SOURCES

HAZARDOUS VOLTAGE FROM ONE OR MORE SOURCES

HAZARDOUS VOLTAGE FROM ONE OR MORE SOURCES

HAZARDOUS VOLTAGE FROM ONE OR MORE SOURCES

HAZARDOUS VOLTAGE FROM ONE OR MORE SOURCES

HAZARDOUS VOLTAGE FROM ONE OR MORE SOURCES

Table with columns: PARTS LIST - CONTROL SECTION, QUANTITY, DESIG., PART NO., DESCRIPTION. Includes items like Dial Plate, Assembly Switch, Assembly PCB, Assembly Power Harness.

Table with columns: PARTS LIST - CONTACTOR SECTION, QUANTITY, DESIG., PART NO., DESCRIPTION. Includes items like Terminal Strip, Transformer, Solenoid, Valve Transformer.

Table with columns: QUANTITY, DESIG., PART NO., DESCRIPTION. Includes items like Solenoid, Valve Transformer, Power Supply, Resistor.

Table with columns: QUANTITY, DESIG., PART NO., DESCRIPTION. Includes items like Interlocking Door Solenoid, Hose, Water Flow Switch.

Table with columns: QUANTITY, DESIG., PART NO., DESCRIPTION. Includes items like Circuit Breaker, Cabinet Control, Logic Diagram.

Table with columns: REV, AUTH, DESCRIPTION, DRWN BY, CHK BY, DATE. Includes revision history for the drawing.

ENTRON CONTROLS INC. SCALE DATE, DRAWN BY, CHK'D BY, APPROVED BY. Includes company information and drawing details.