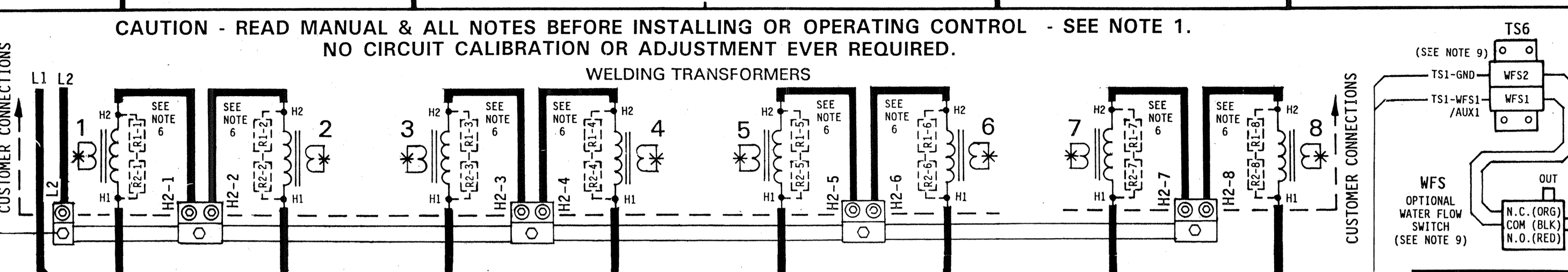
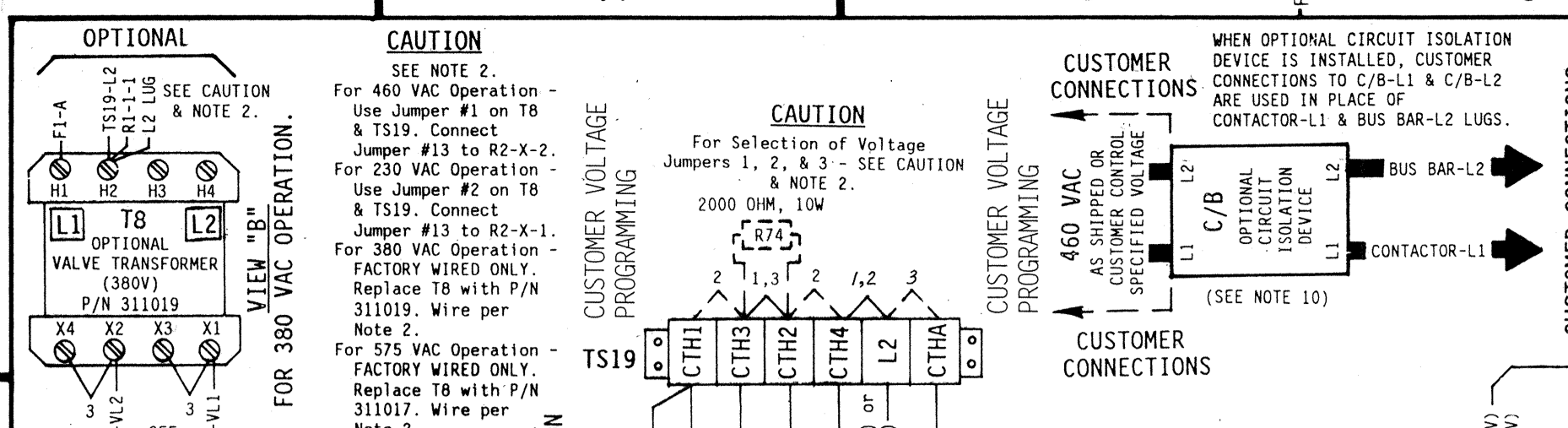
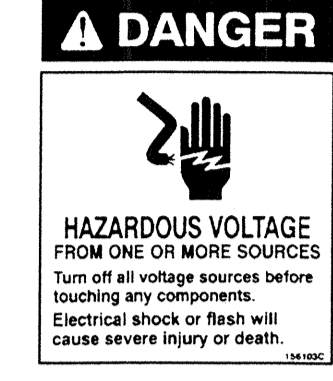


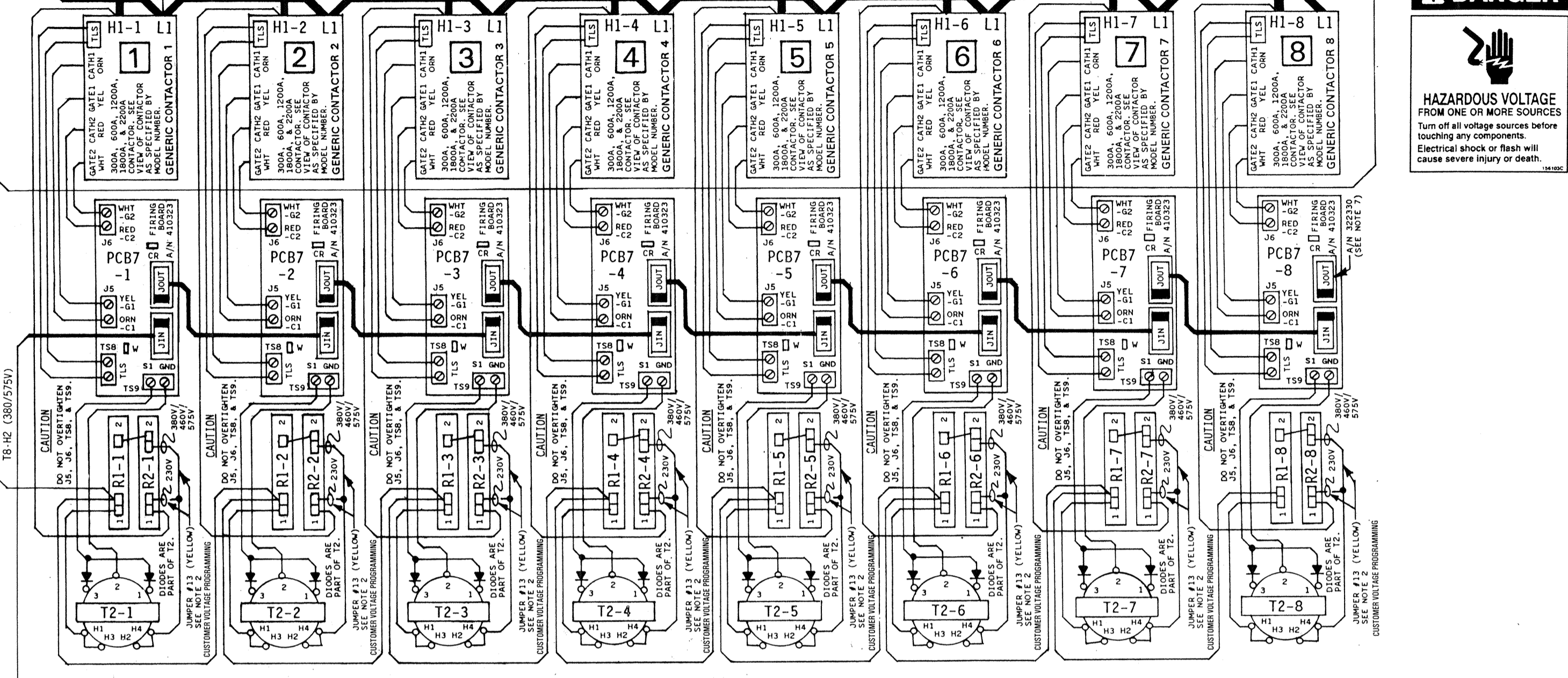
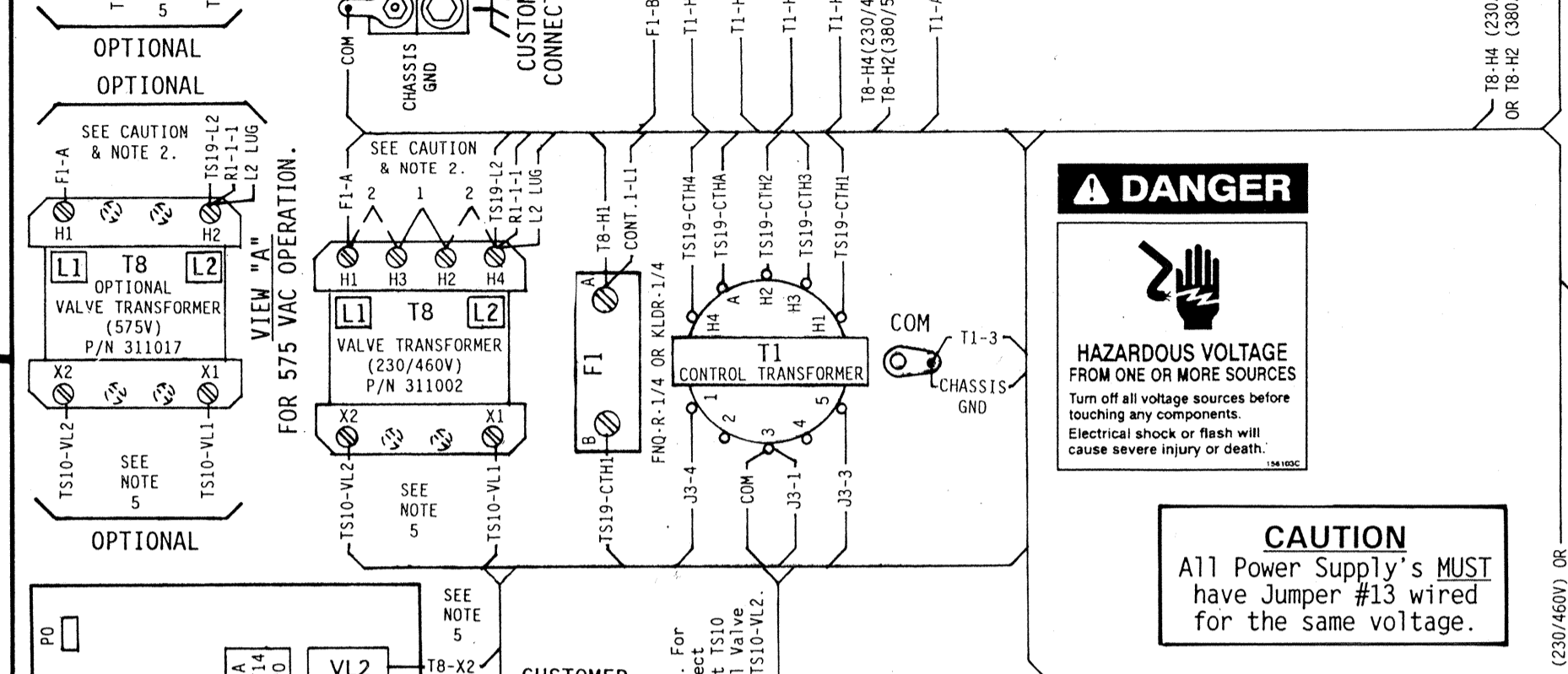
**CAUTION - READ MANUAL & ALL NOTES BEFORE INSTALLING OR OPERATING CONTROL - SEE NOTE 1.**  
**NO CIRCUIT CALIBRATION OR ADJUSTMENT EVER REQUIRED.**



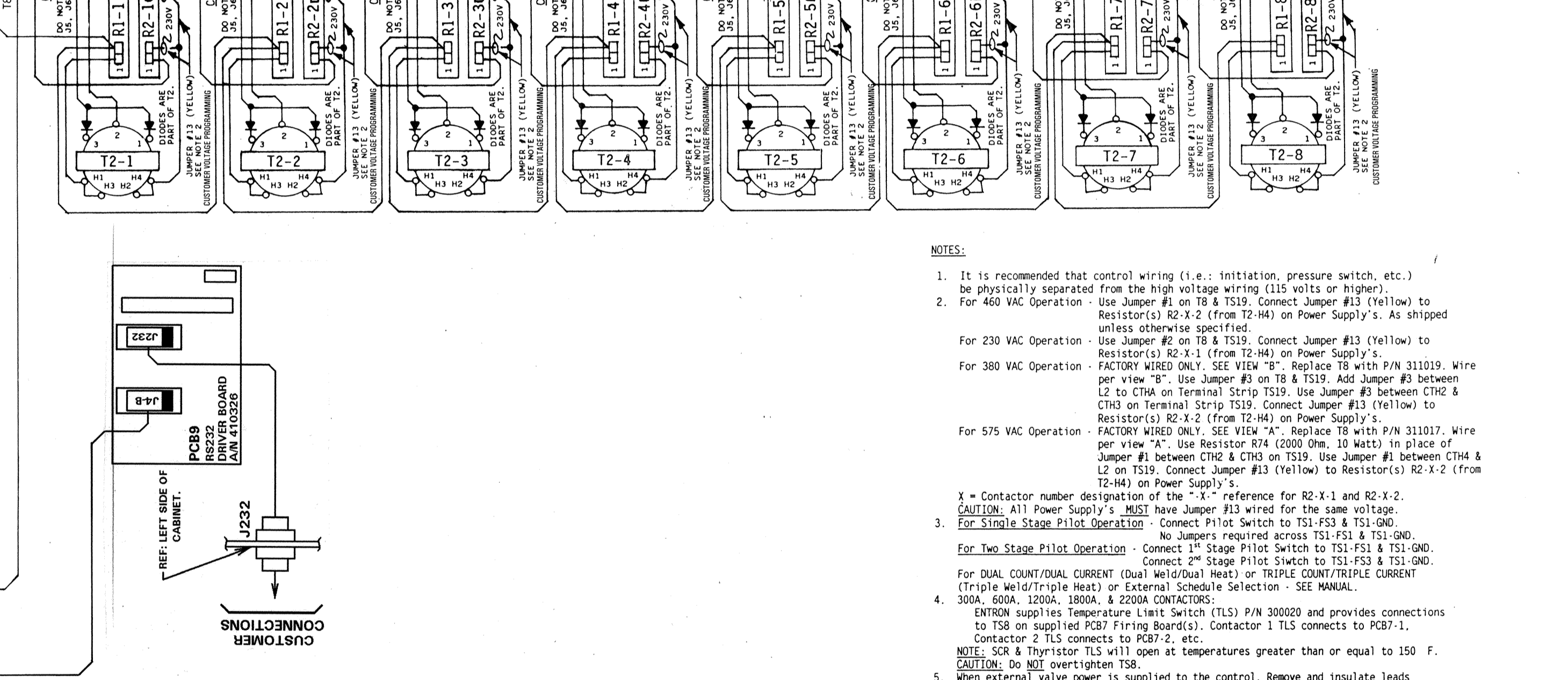
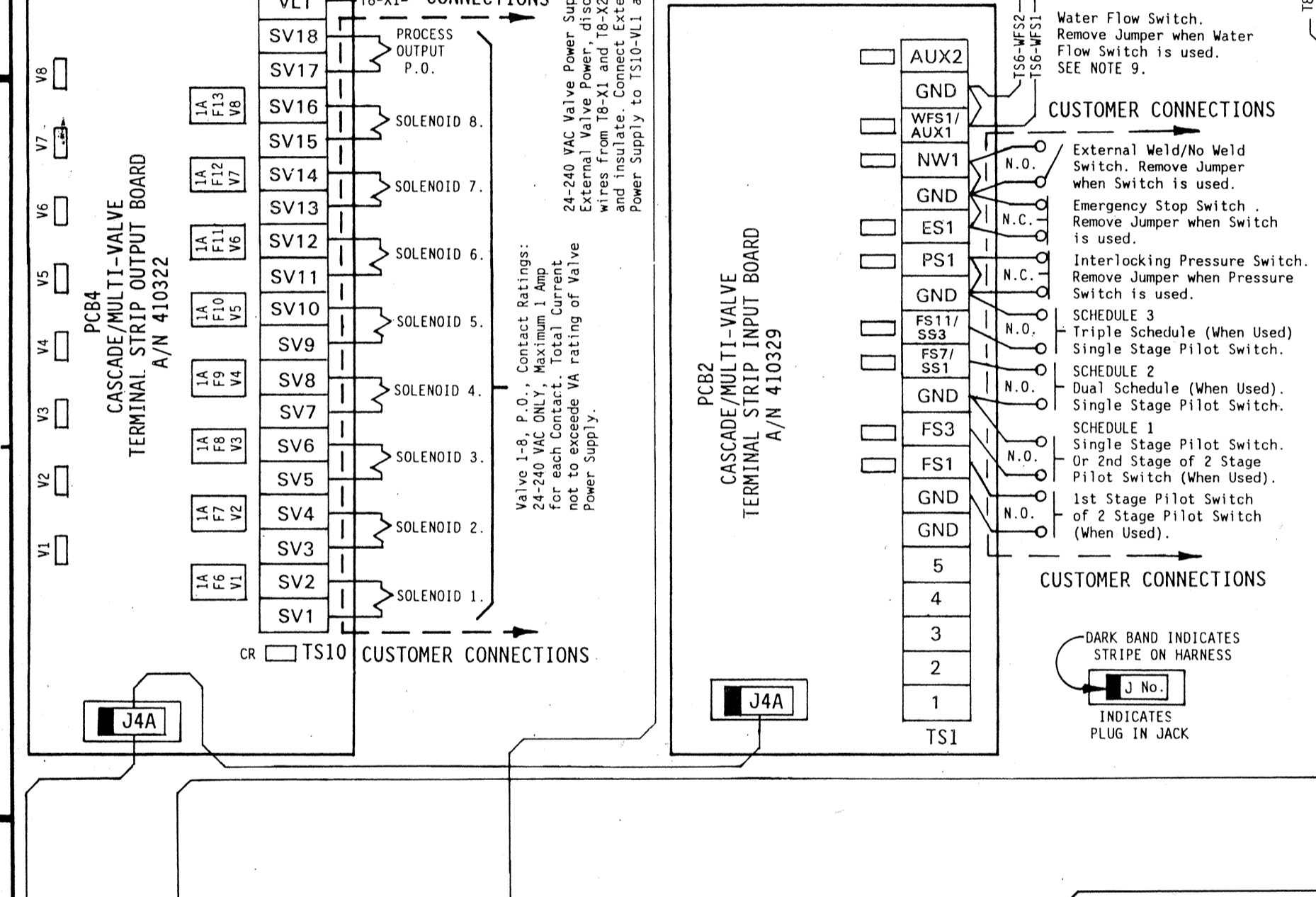
QTY	DESIG.	PART NO.	DESCRIPTION
1	1	600558	Assem., Dial Plate, EN1000 Cascade, Consisting of:
1	1	600541-001	Assem., Switch, Front Panel Display Board
1	1	540248	Illustrated Panel, Dial Plate, EN1000 Cascade/Multi-Valve
1	1	550086	Display Window, Panel, Red Filter, Cont. & Valve, EN1000 Cascade
1	1	515104	Display Window, Panel, Red Filter, LED, EN1000 Cascade
1	1	410324	Assem., PCB, Contactor Weld & Valve Indicator Board, EN1000 Casc.
1	1	410321	Assem., PCB, Program Board, EN1000 Cascade/Multi-Valve
1	1	600531-001	Assem., Switch, Keypad, Momentary, SPST
1	1	565006	Hole Plug, 3/4" Dia., Black, (For Keypad Hole)
1	1	322393	ASSEM. HARNESS, RS232 DRIVER TO LED INDICATOR BD, DOOR MT.
1	1	322394	ASSEM. HARNESS, RS232 DRIVER TO LED INDICATOR BD, SIDE MT.
1	1	322340-004	Assem., Harness, Power, Door Mounted
1	1	322341-004	Assem., Harness, Power, Side Mounted
1	1	322343	Assem., Harness, Seq. Display Bd./Program Bd./LED Indicator Bd.
1	1	322344	Assem., Harness, Program Bd./Output Bd./Input Bd., Door Mt'd
1	1	322344	Assem., Harness, Program Bd./Output Bd./Input Bd., Side Mt'd
1	1	322346	Assem., Harness, Program Bd. to Firing Board, Door Mounted
1	1	322347	Assem., Harness, Program Bd. to Firing Board, Side Mounted



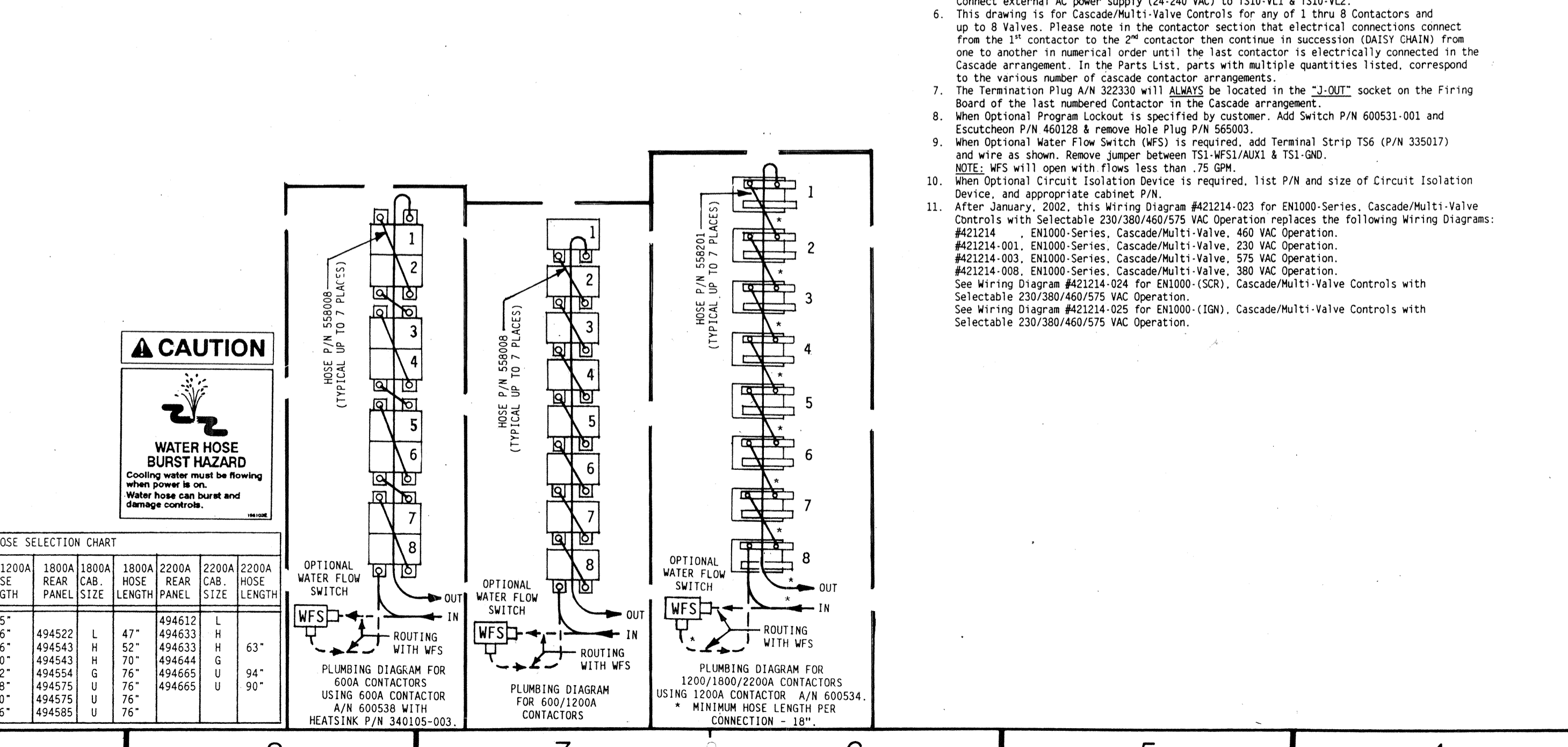
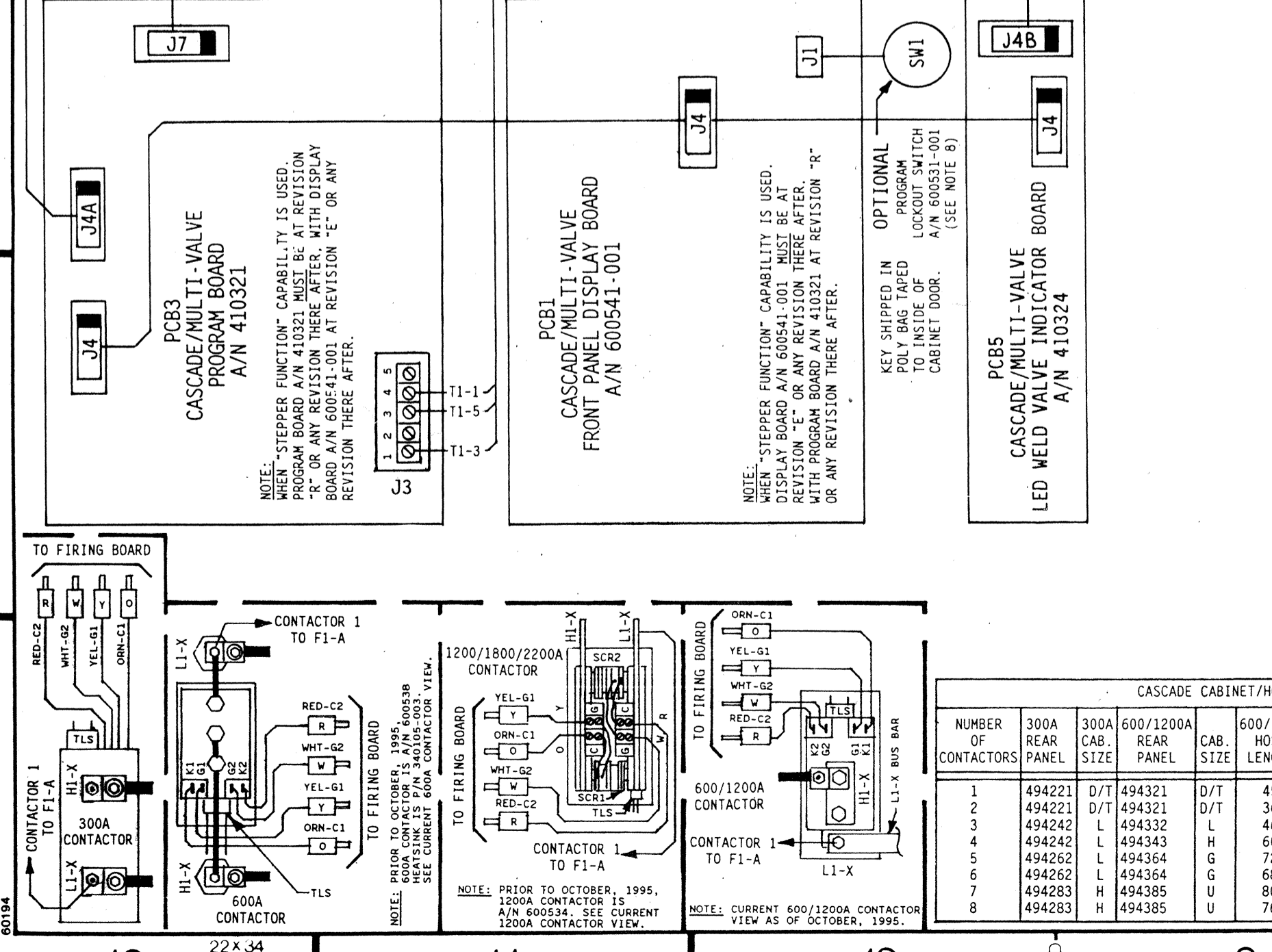
**HAZARDOUS VOLTAGE**  
 FROM ONE OR MORE SOURCES  
 Turn off all voltage sources before touching any components.  
 Electrical shock or flash will cause severe injury or death.



QTY	DESIG.	PART NO.	DESCRIPTION
1	1	335017	Terminal Strip, 2 Pin, 15A, (For WFS)
1	1	335024	Terminal Strip, 6 Pin, 20A
1	1	310001	Transformer, Control, (Part of J3 Harness)
1	1	311002	Transformer, Valve, 150VA, 230/460V
1	1	321017	Transformer, Valve, 150VA, 575V
1	1	311019	Transformer, Valve, 150VA, 380/408/415V
1	1	311022	Transformer, Valve, 250VA
1	1	311021	Transformer, Valve, 500VA
1	1	323149	Assem., Wire, Valve Transformer, 22 Ga., Black
1	1	341040	Insulator, Standoff, L2 Bus Bar
1	1	346011	Lug, Screw, 1/4" Bolt to 2/0 Wire, L1, L2, H1, & 600A Contactor
1	1	346015	Lug, Screw, 1/4" Bolt to Dual 2/0 Wire, L2 Bus Bar
1	1	346022	Lug, Screw, 1/4" Bolt to 4/0 Wire, L1, L2, & H1
1	1	346006	Lug, Screw, 1/4" Bolt to 350 MCM Wire, L1, L2, & H1
1	1	346010	Lug, Screw, 1/4" Bolt to Dual 350 MCM Wire, L2 Bus Bar
1	1	346003	Lug, Screw, 1/4" Bolt to 500 MCM Wire, L1, L2, & H1
1	1	346016	Lug, Screw, 1/4" Bolt to Dual 500 MCM Wire, L2 Bus Bar
1	1	600520	Assem., Contactor, Air, 300A, w/TLs, 460/575V
1	1	600520-004	Assem., Contactor, Air, 300A, w/TLs, 460/575V, w/o L1 Lug
1	1	600536	Assem., Contactor, Water, 600A, 460/575V
1	1	600598	Assem., Contactor, Water, 1200A, 460/575V
1	1	600549	Assem., Contactor, Water, 1800A, 460/575V
1	1	600535	Assem., Contactor, Water, 2200A, 460/575V
1	1	300020	Switch, Temp. Limit, (N.C.), (Part of 600520 & 600520-004)
1	1	300021	Plate, Mounting, 1800/2200A Contactor
1	1	322348	Bracket, Mounting, 1800/2200A Contactor
1	1	525035-001	Bracket, Mounting, 300A Contactor
1	1	600547-005	Assem., Power Supply, Selectable 230/380/460/575V, Consisting of:
1	1	600548-003	Transformer, Sense, (Part of 600547-005)
1	1	225016	Resistor, Power, Surge, 500 Ohm, 100W, (Part of 600547-005)
1	1	325024	Assem., Wire, Surge Resistor, 18 Ga., Black, (Part of 600547-005)
1	1	410323	Assem., PCB, Firing Board, Cascade, (Mounted on Power Supply)
1	1	322348	Assem., Harness, Firing Bd., Input to Output
1	1	300017	Assem., Termination Plug, Cascade Firing Bd., (SEE NOTE 7)
1	1	600048	Assem., Resistor, Power, 2000 Ohm, 10W, (For 575V)
1	1	308010	Fuseholder, 1 Pole, Mini, 600V, HPC-L(BBS)
1	1	307024	Fuse, Control, 1/4A, FNQ-R-1/4 OR KLDR-1/4
1	1	307022	Fuse, 1 Amp, Slow Blow, 2AG, (Part of 410322)
1	1	346004	Lug, Screw, Chassis GND, 5/16" Bolt to 2/0 Wire
1	1	346029	Assem., PCB, Terminal Strip Input Bd., Cascade
1	1	410322	Assem., PCB, Terminal Strip Output Bd., Cascade
1	1	510236	Plate Mounting, Terminal Strip Input & Output Boards
1	1	410326	Assem., PCB, RS232 DRIVER BD.
1	1	322369-002	ASSEM. HARNESS, RS232 DRIVER BD. TO CABINET
1	1	322369-004	ASSEM. HARNESS, RS232 DRIVER BD. TO CABINET
1	1	900045	Hose, 3/8" I.D.
1	1	558008	Hose, 3/8" I.D. x 12" Long
1	1	558001	Hose, 3/8" I.D. x 3-3/8" Dia. Coil x 18' Long
1	1	556010	Hose Clamp, 3/8" Hose
1	1	600179	Assem., Water Fitting, 3/8" Hose
1	1	600292-004	Assem., Water Flow Switch, 3/8" Hose
1	1	510247	Circuit Breaker, Pole, Amp, Cabinet Control, Style "D/T", w/Circuit Breaker
1	1	510257	Cabinet Control, Style "LS/LF", w/Circuit Breaker
1	1	510053	Cabinet Control, Style "MS/HP", w/Circuit Breaker
1	1	510055	Cabinet Control, Style "SS/GF", w/Circuit Breaker
1	1	510114	Cabinet Control, Style "US/UF", w/Circuit Breaker
1	1	700112	Manual, EN1000 Cascade
1	1	421386	Logic Diagram, EN1000 Cascade
1	1	421214-039	WIRING DIAGRAM, EN1000-SERIES/232, CASC/MULTI-VALVE



QTY	DESIG.	PART NO.	DESCRIPTION
1	1	308010	Fuseholder, 1 Pole, Mini, 600V, HPC-L(BBS)
1	1	307024	Fuse, Control, 1/4A, FNQ-R-1/4 OR KLDR-1/4
1	1	307022	Fuse, 1 Amp, Slow Blow, 2AG, (Part of 410322)
1	1	346004	Lug, Screw, Chassis GND, 5/16" Bolt to 2/0 Wire
1	1	346029	Assem., PCB, Terminal Strip Input Bd., Cascade
1	1	410322	Assem., PCB, Terminal Strip Output Bd., Cascade
1	1	510236	Plate Mounting, Terminal Strip Input & Output Boards
1	1	410326	Assem., PCB, RS232 DRIVER BD.
1	1	322369-002	ASSEM. HARNESS, RS232 DRIVER BD. TO CABINET
1	1	322369-004	ASSEM. HARNESS, RS232 DRIVER BD. TO CABINET
1	1	900045	Hose, 3/8" I.D.
1	1	558008	Hose, 3/8" I.D. x 12" Long
1	1	558001	Hose, 3/8" I.D. x 3-3/8" Dia. Coil x 18' Long
1	1	556010	Hose Clamp, 3/8" Hose
1	1	600179	Assem., Water Fitting, 3/8" Hose
1	1	600292-004	Assem., Water Flow Switch, 3/8" Hose
1	1	510247	Circuit Breaker, Pole, Amp, Cabinet Control, Style "D/T", w/Circuit Breaker
1	1	510257	Cabinet Control, Style "LS/LF", w/Circuit Breaker
1	1	510053	Cabinet Control, Style "MS/HP", w/Circuit Breaker
1	1	510055	Cabinet Control, Style "SS/GF", w/Circuit Breaker
1	1	510114	Cabinet Control, Style "US/UF", w/Circuit Breaker
1	1	700112	Manual, EN1000 Cascade
1	1	421386	Logic Diagram, EN1000 Cascade
1	1	421214-039	WIRING DIAGRAM, EN1000-SERIES/232, CASC/MULTI-VALVE



REV	AUTH	DESCRIPTION	DRWN BY	CHK BY
1		ORIGINAL RELEASE		
2				
3				
4				
5				
6				
7				
8				
9				
10				
11				
12				

**NOTICE**  
 FOR SERVICE ON THIS CONTROL  
 Contact Your Machine Dealer  
 ENTRON CONTROLS INC.  
 DIRECTLY: (630) 682-9600  
 460 EAST STANLEY ROAD  
 CAROL SPRING, IL 61818  
 FAX # (630) 682-3374

**CAUTION**  
 SEE NOTE 2.  
 Control Shipped is Wired for 460 VAC Operation unless otherwise specified.

**ENTRON CONTROLS INC.**  
 SCALE DATE DRAWN BY CHK'D BY APPROVED BY  
 TOL RANK UNLESS SPECIFIED REVISED  
 ANGLES: ± 5° REV LTR APPROVED BY  
 DECIMALS: ± 0.10  
 FRACTIONS: ± 1/64  
 WIRING DIAGRAM, EN1000-SERIES/232, CASC/MULTI-VALVE CONTROL, 1-8 CONTACTORS/8 VALVE OUTPUT CIRCUITS, WIRED FOR SELECTABLE 230/380/460/575 VAC OPERATION.  
 NEXT ASSM/USED ON DRAWING NUMBER REV  
 421214-039