

NO CIRCUIT CALIBRATION OR ADJUSTMENT EVER REQUIRED.

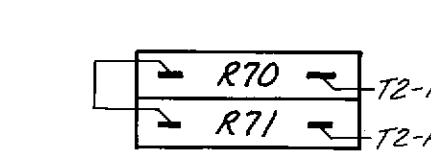
CAUTION Control Shipped Wired for 460 VAC Unless Otherwise Specified - See Note 2.

NOTE: CURRENT 150A CONTACTOR AS OF JANUARY, 1996. AFTER JULY, 1996, 70A CONTACTOR HAS BEEN REPLACED BY CURRENT 150A CONTACTOR. AFTER JANUARY, 1996 & BEFORE JULY, 1996, 70A CONTACTOR IS A/N 600614. FOR 70/150A CONTACTORS PRIOR TO JANUARY, 1996 SEE VIEW AT RIGHT.

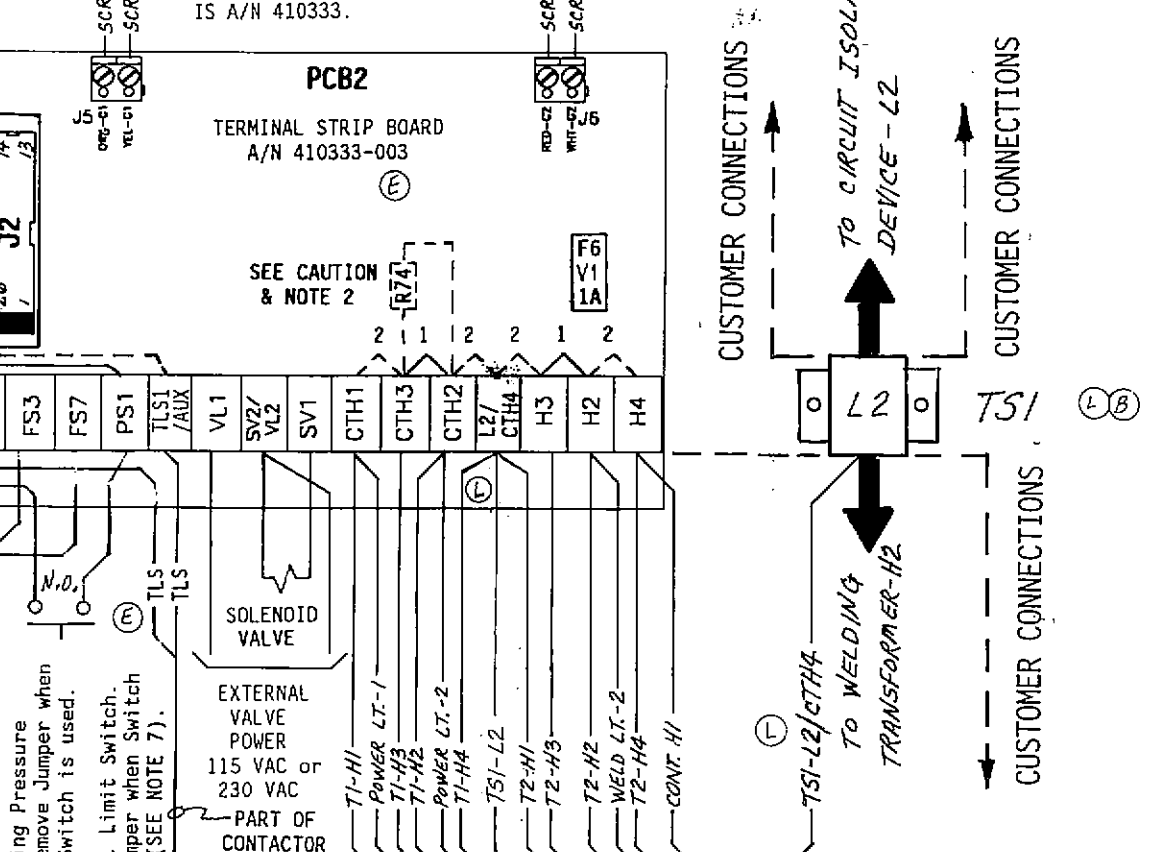
NOTE: PRIOR TO APRIL, 1993, 70A CONTACTOR IS A/N 600568. 150A CONTACTOR IS A/N 600569. AFTER APRIL, 1993 & BEFORE JANUARY, 1996, 70A CONTACTOR IS A/N 600570. 150A CONTACTOR IS A/N 600571. AFTER JANUARY, 1996, 70A & 150A CONTACTORS HAVE BEEN REPLACED BY CURRENT VIEW AT LEFT.

NOTE: PRIOR TO 10-1-00 F1 FUSE WAS P/N 307018, 6/10A, TYPE BBS 6/10.

SURGE RESISTORS 500 OHM, 100W, EACH



NOTE: PRIOR TO JANUARY, 1996, PCB2 TERMINAL STRIP BOARD IS A/N 410333.



CAUTION SEE NOTE 2 For 460 VAC Operation - Use Jumpers #1. As shipped unless otherwise specified. For 230 VAC Operation - Use Jumpers #2. For 575 VAC Operation - FACTORY WIRED ONLY. Jumper #1 is used between H2 & H3 CTH2 & CTH3 is removed & replaced by resistor R74 (2000 Ohm, 10 Watt). For 115 VAC or 380 VAC Operation - Consult Factory.

WARNING: HIGH VOLTAGE VOLTAGES PRESENT IN THIS CONTROL CAN CAUSE SEVERE OR FATAL INJURIES. NOTE: EVEN THOUGH SUPPLY POWER TO THIS UNIT HAS BEEN DISCONNECTED, THERE MAY BE VOLTAGES IN THIS CONTROL ORIGINATING FROM OTHER SOURCES. FOR ALL VOLTAGE POTENTIAL TO BE REMOVED FROM THIS CONTROL, POWER MUST BE REMOVED FROM ALL EXTERNAL CONTROL CIRCUITS CONNECTED TO TERMINALS IN THIS CABINET.

FOR SERVICE ON THIS CONTROL CONTACT YOUR MACHINE DEALER OR ENTRON CONTROLS INC. DIRECTLY: (630) 882-8800 485 EAST RANDY ROAD CAROL STREAM, IL 60138 FAX # (630) 882-3374

Table with 4 columns: QTY, DESIG., PART NO., DESCRIPTION. Lists parts for the control section including PCB1, SW1, SW2, PWR.LT., and J2-J3.

Table with 4 columns: QTY, DESIG., PART NO., DESCRIPTION. Lists parts for the contactor/power section including TS1, TS4, T1, T2, F1, R74, R70, R71, TLS, PCB2, F6(PCB2), Jumper, Manual, and Wiring Diagram.

Optional Keylock, when specified by customer. See Note 4. Pack Key in Poly Bag 900148 & attach to Door w/Yellow Tape 900118. Substitution or Addition of parts when 575V Control is specified. See Drawing #600567 for Mechanical Assembly Instructions. See Drawing #440269 for Packing Instructions, "B" Cabinet. See Drawing #440353 for Label Locations, "B" Cabinet.

- NOTES: 1. It is recommended that control wiring (i.e.: initiation, pressure switch, etc.) be physically separated from the high voltage wiring (115 volts or higher). 2. For 460 VAC Operation - Use Jumpers #1 on TS1. As shipped unless otherwise specified. For 230 VAC Operation - Use Jumpers #2 on TS1. For 575 VAC Operation - FACTORY WIRED ONLY. Use Jumper #1 between H2 & H3 on TS1. Use Resistor R74 (2000 Ohm, 10 Watt) in place of Jumper #1 between CTH2 & CTH3 on TS1. For 115 VAC or 380 VAC Operation - CONSULT FACTORY. 3. For Single Stage Pilot Operation - Connect pilot switch to TS1-F53 & TS1-GND. No jumpers required across TS1-F51 & TS1-GND. For Two Stage Pilot Operation - Connect 1st stage pilot switch to TS1-F51 & TS1-GND. Connect 2nd stage pilot switch to TS1-F53 & TS1-GND. For DUAL COUNT/DUAL CURRENT (Dual Weld/Dual Heat) SEE MANUAL. 4. When Optional Program Lockout is specified by customer. Dial Plate A/N 600566-001 replaces A/N 600566. Add Switch P/N 600531-001 & remove Hole Plug P/N 565003. 5. See Wiring Diagram #421180 for EN1000-Series, "S" Cabinet. See Wiring Diagram #421189 for EN1000-Series, "R" Cabinet. See Wiring Diagram #421210 for EN1000-Series, "D/T/LF/LS" Cabinet, w/Optional Circuit Isolation Device. See Wiring Diagram #421212 for EN1000-Series, "E" Cabinet. 6. 7. EN1000-150B & EN1000-300B: ENTRON supplies Temperature Limit Switch (TLS) P/N 300020 and provides connections to TS1-TLS1/AUX & TS1-GND. Jumper not required between TS1-TLS1/AUX & TS1-GND. NOTE: TLS Thyristor will open at temperatures greater than or equal to 150° F. After January, 1996 the Temperature Limit Switch (TLS) is a part of 150A Contactor Assemblies. 8. For EN1000 "B" Cabinet controls built before April, 1993 with 70A Contactor A/N 600568 & 150A Contactor A/N 600569, see Wiring Diagram 421262 revision "A".

Revision history table with columns: REV, AUTH, DESCRIPTION, DATE. Includes a table for drawing approvals with columns: SCALE, DATE, DRAWN BY, CHK'D BY, APPROVED BY. Includes a table for tolerances and a table for wire specifications. Includes a table for drawing numbers and revisions.