

VOLTAGES PRESENT IN THIS CONTROL CAN CAUSE SEVERE OR FATAL INJURIES. NOTE: EVEN THOUGH SUPPLY POWER TO THIS UNIT HAS BEEN DISCONNECTED, THERE MAY BE VOLTAGES IN THIS CONTROL ORIGINATING FROM OTHER SOURCES.

CAUTION Control Shipped Wired for 460 VAC Unless otherwise specified - See Note 2

CAUTION DO NOT OPERATE WITHOUT WATER ON POWER ON WITHOUT WATER FLOW MAY CAUSE DAMAGE TO CONTROL. TURN POWER OFF WHEN CONTROL IS NOT IN USE.

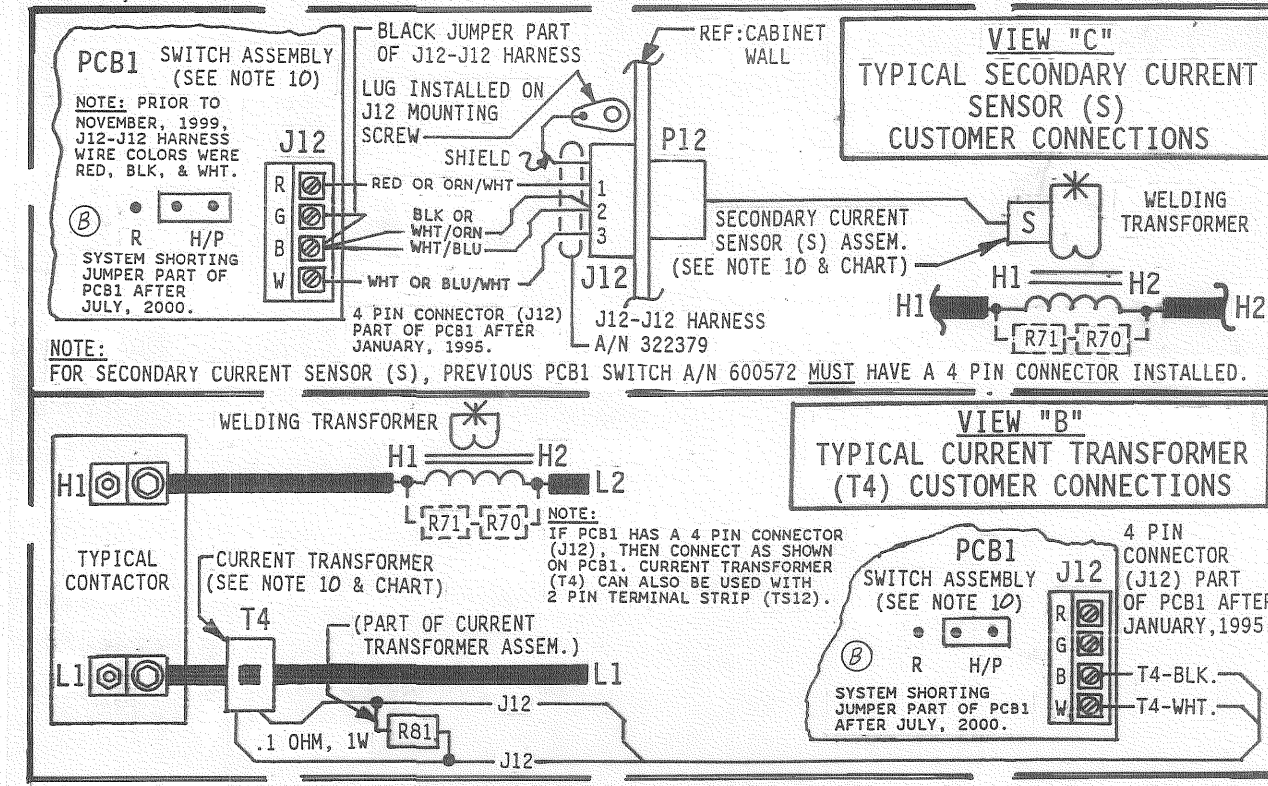
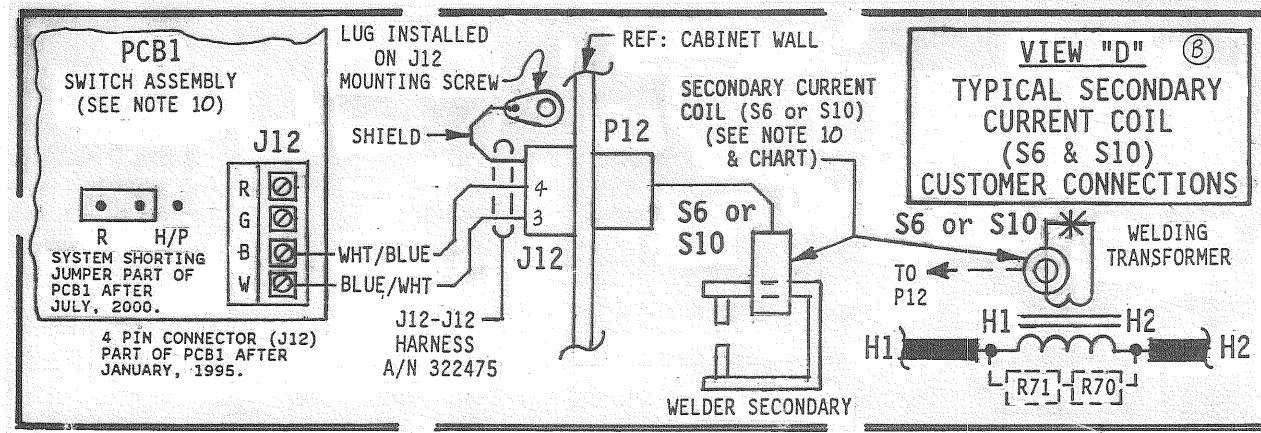
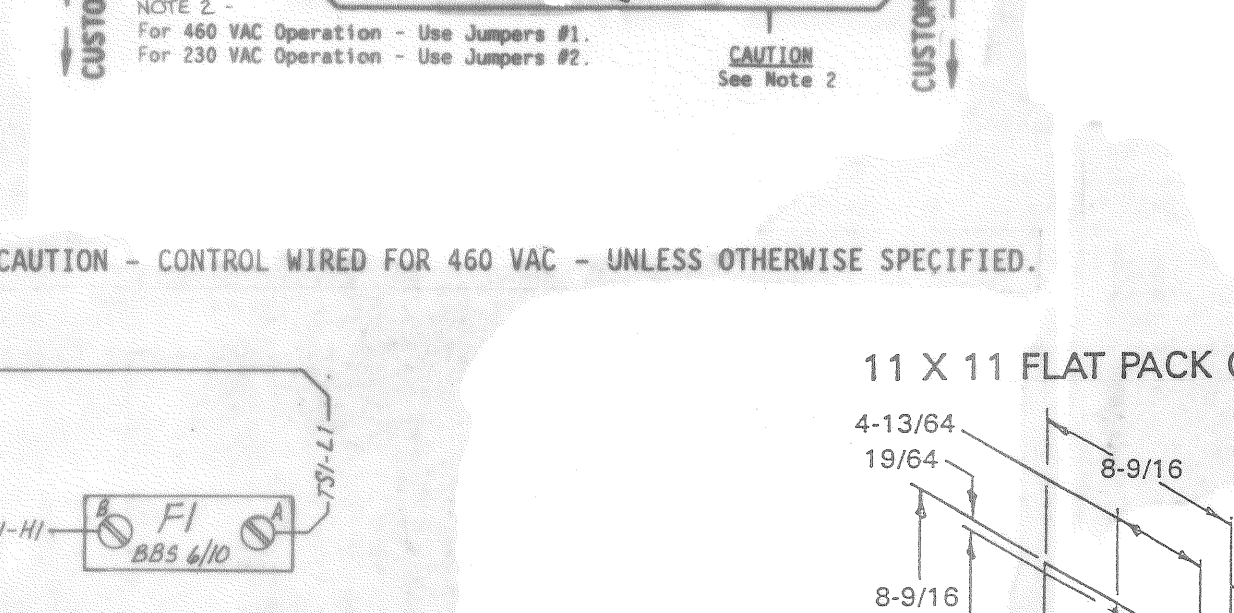
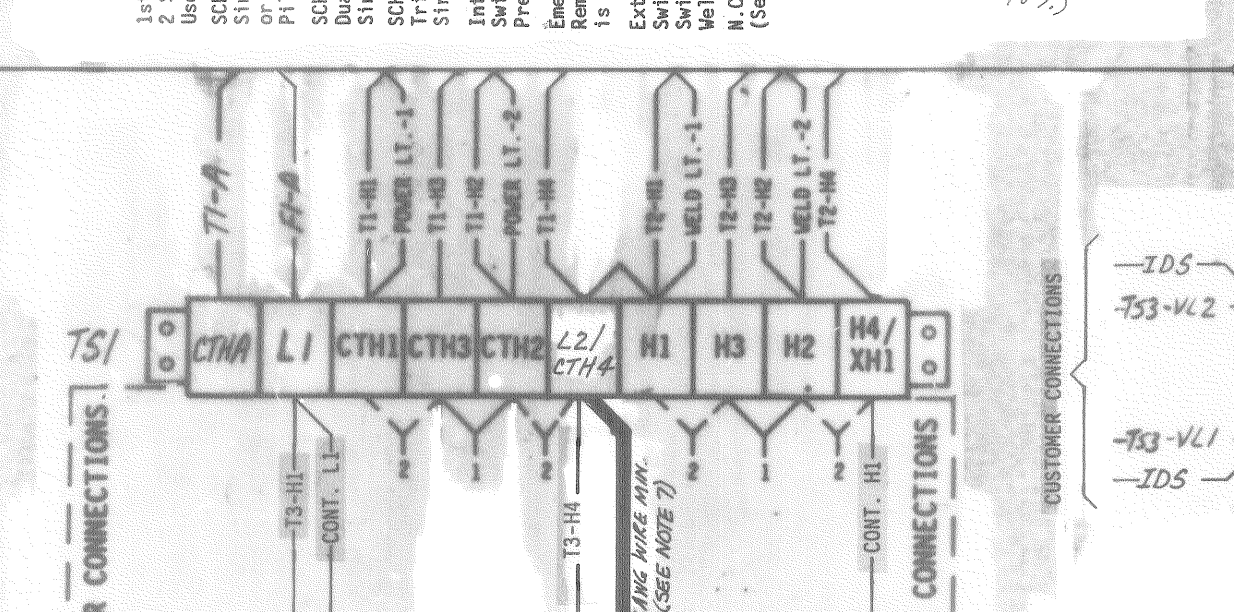
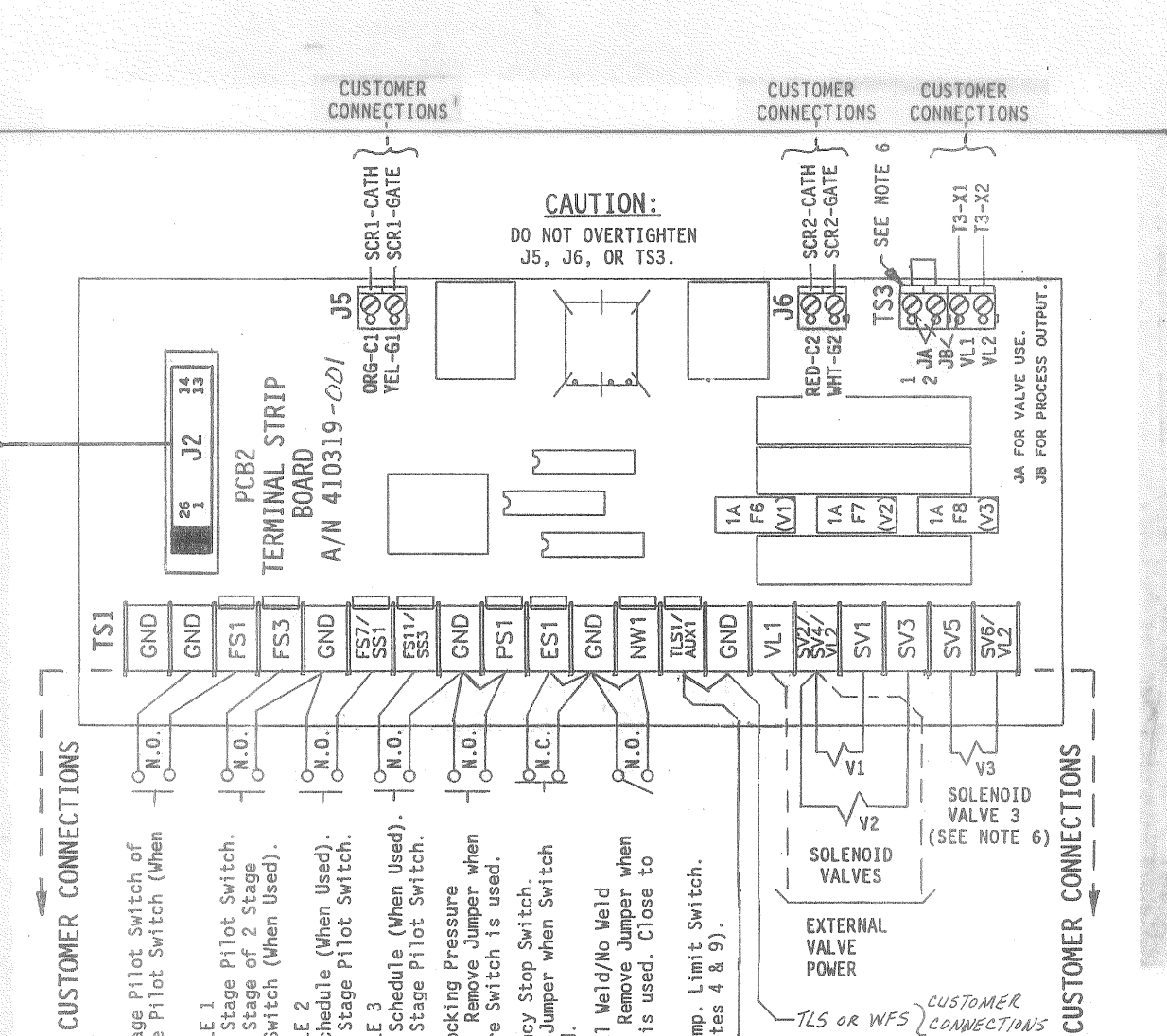
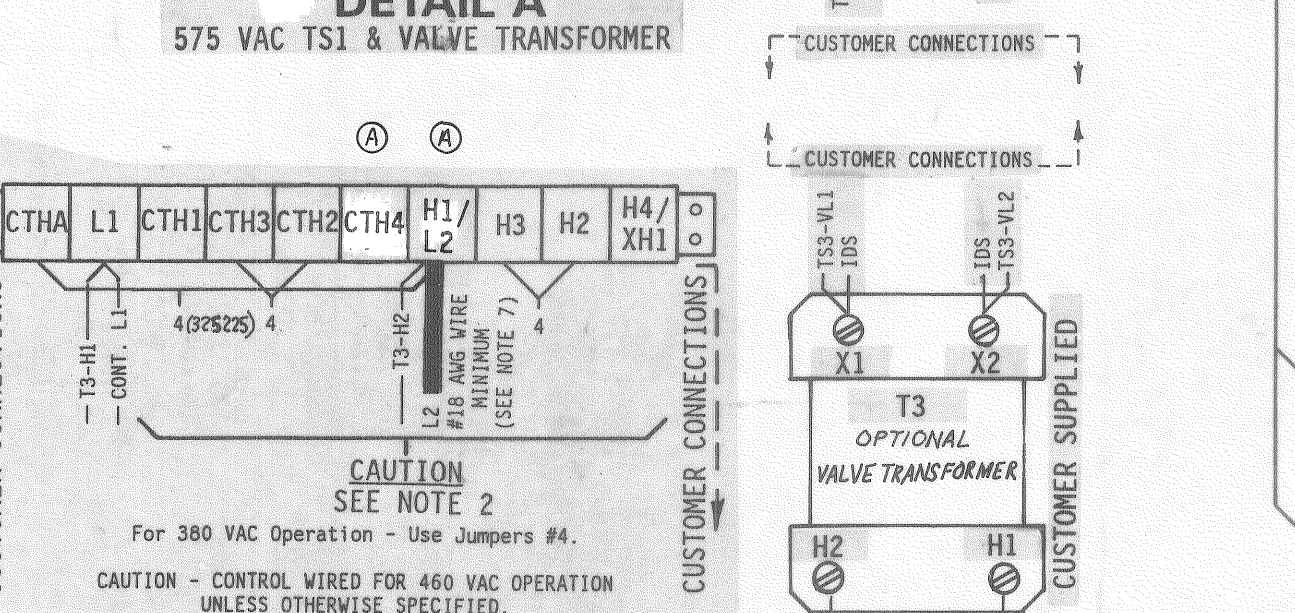
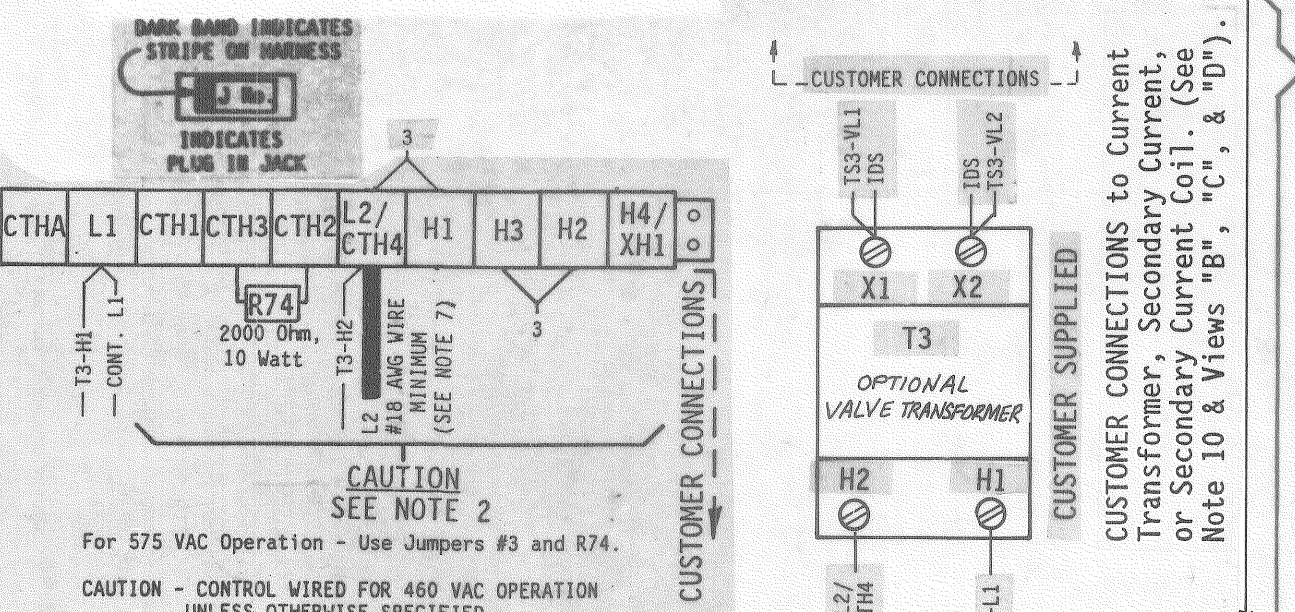
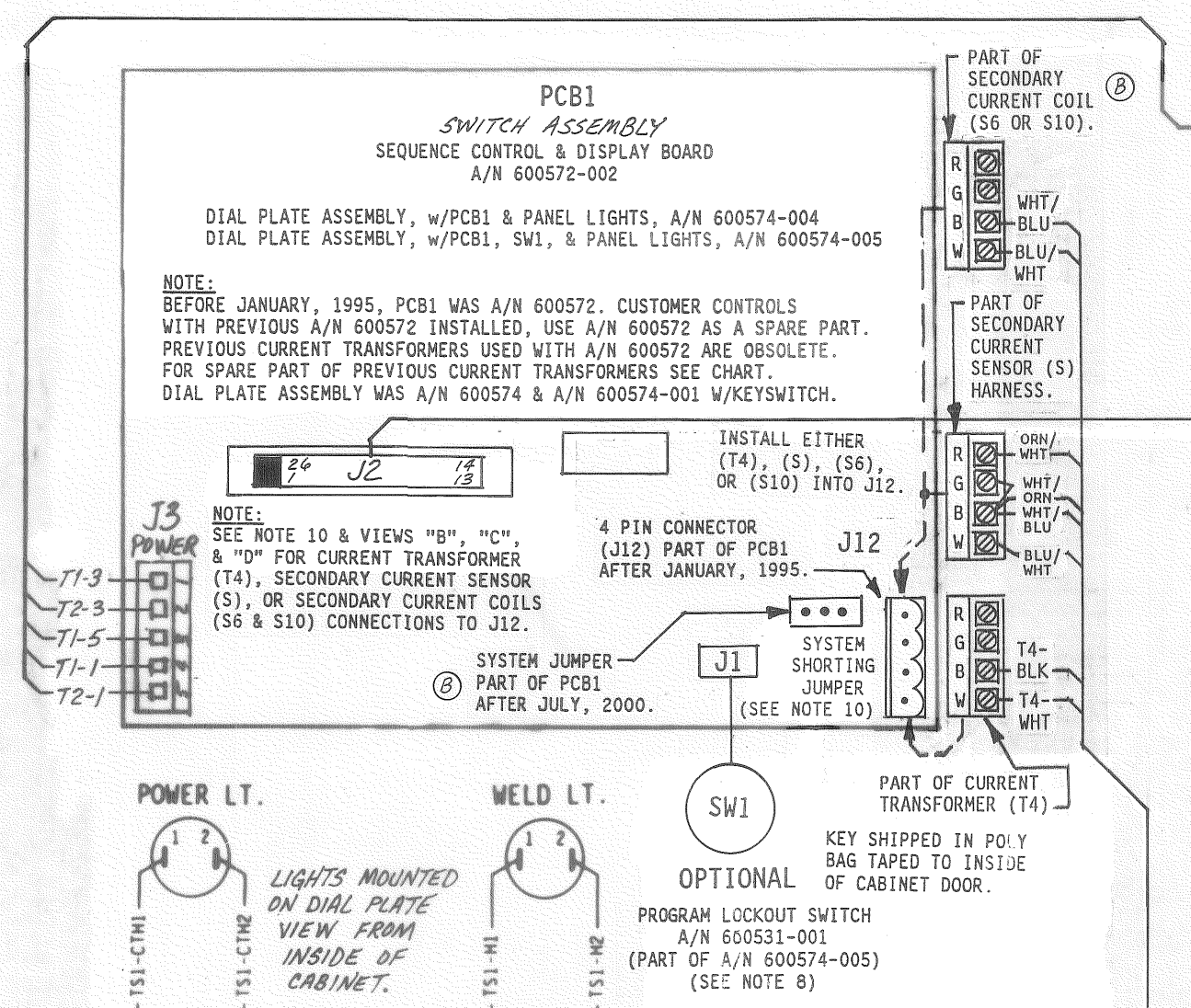
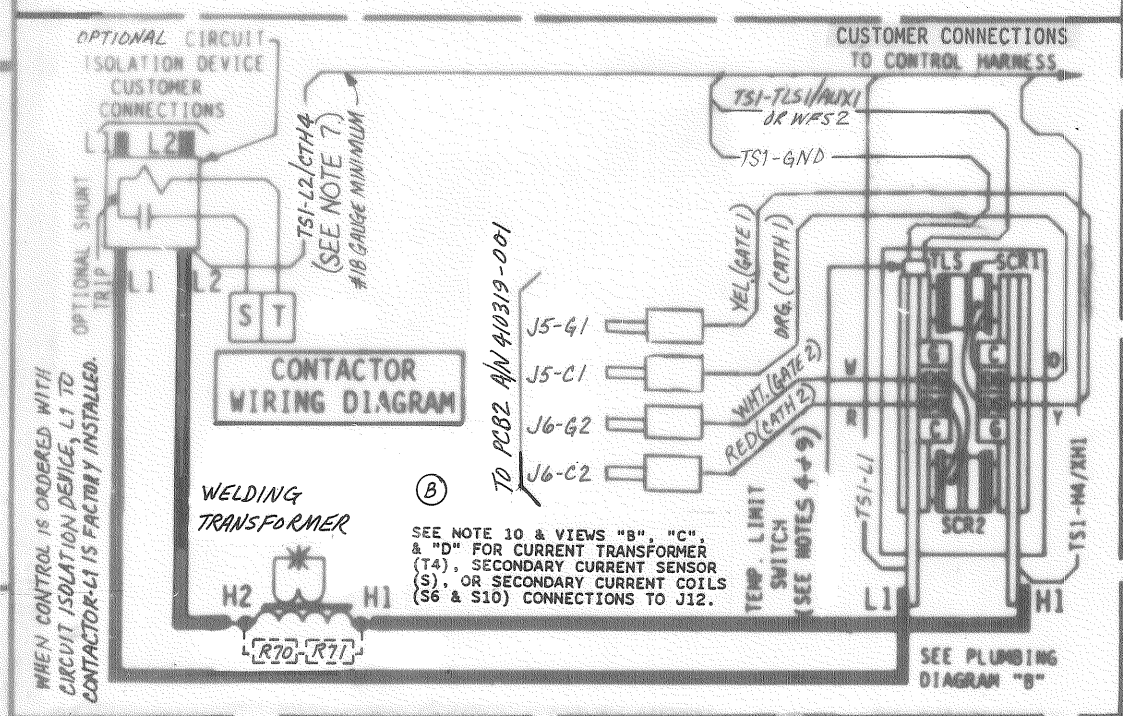
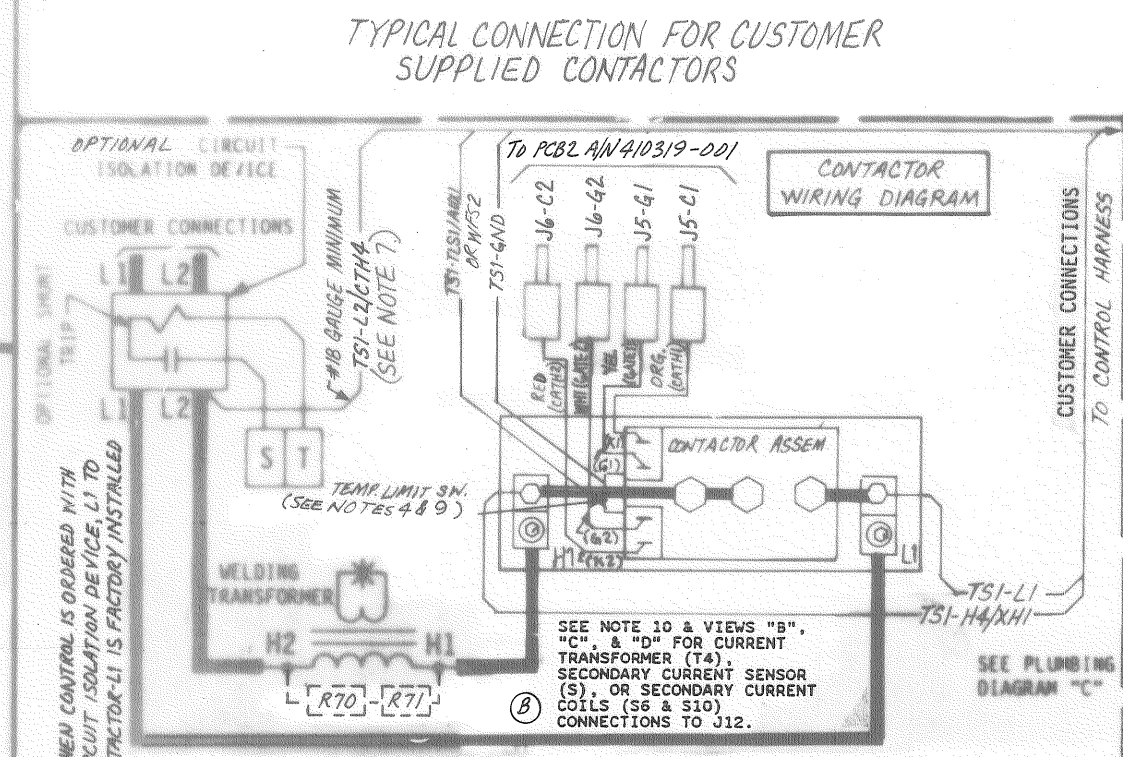


Table with 3 columns: COIL/SENSING MODEL NUMBER, CURRENT TRANSFORMER, SECONDARY CURRENT SENSOR, OR SECONDARY CURRENT COIL PART NUMBER, and CONTACTOR SIZE EXTERNAL FIRING SCR.

X = ONE CURRENT TRANSFORMER ASSEMBLY, ONE SECONDARY CURRENT SENSOR, OR ONE SECONDARY CURRENT COIL ASSEMBLY.



- NOTES: 1. It is recommended that control wiring... 2. For 460 VAC Operation - Use Jumper #1 on T3 & TS1...

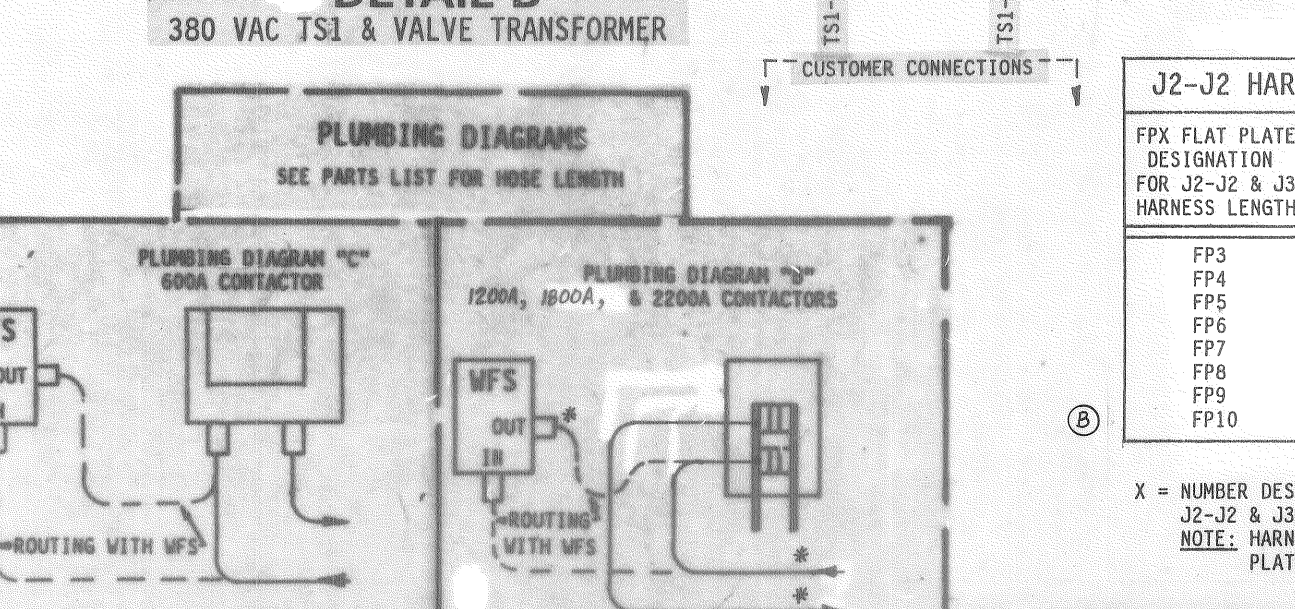
- NOTES: 4. It is recommended that a Temperature Limit Switch (TLS) similar to ENTRON P/N 300020 be provided and connected to TSI-TLS1/AUX1 & TSI-GND...

- NOTES: 6. VALVE 3 OUTPUT USAGE: TSI-SVS & TSI-SV6 (Valve 3) can be used for either a Valve output or a Process output...

- NOTES: 7. Connect TSI-L2/CTH4 to L2/H2 side of Welding Transformer Primary.

- NOTES: 10. CURRENT TRANSFORMER (T4) CONNECTIONS: Wire per view "B". Current Transformer coil (T4) should be installed on L1...

- NOTES: 11. After October, 1997, this Wiring Diagram #421269-011 for EN1001-FPX(SCR), 11 x 11 Flat Plate Control replaces Wiring Diagram #421269-010 for EN1001-FP(SCR)...



J2-J2 HARNESS & J3 HARNESS LENGTH CHART table with columns for FPX FLAT PLATE DESIGNATION, J2-J2 & J3 HARNESS LENGTHS, J2-J2 HARNESS PART NUMBER, and J3 HARNESS PART NUMBER.

X = NUMBER DESIGNATIONS 3 THRU 10 OF THE "FPX" REFERENCE FOR J2-J2 & J3 HARNESS LENGTHS.

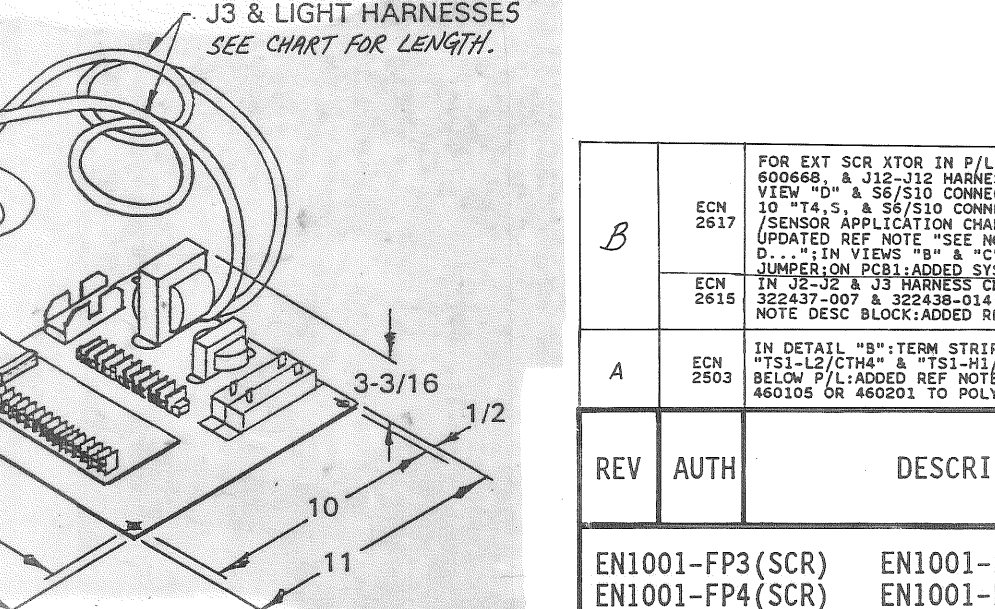
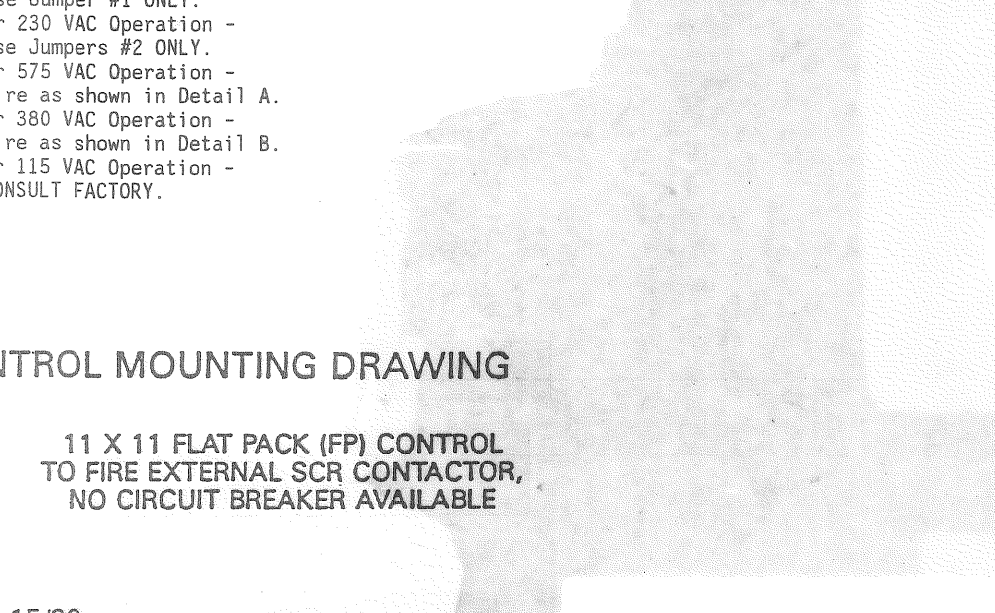
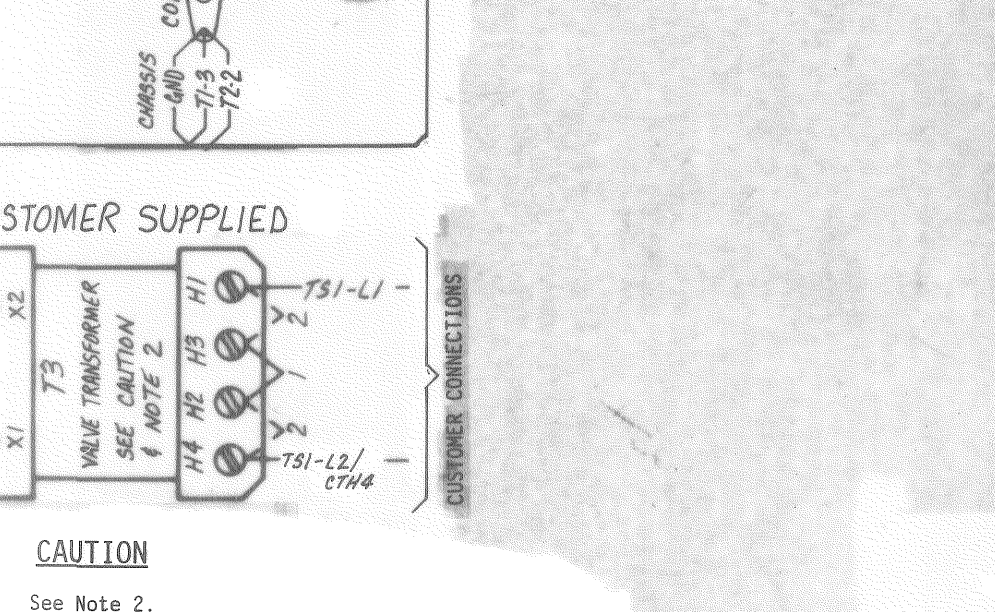
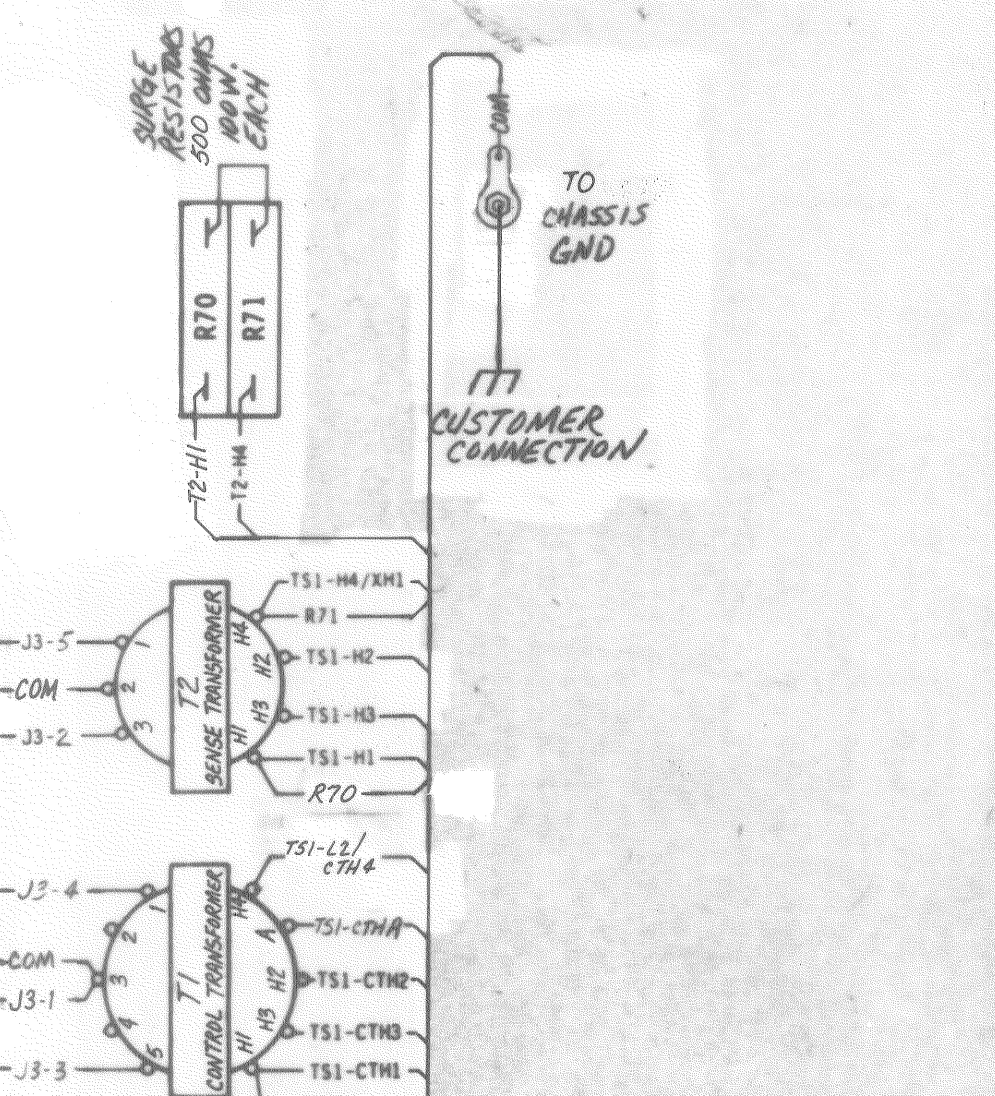


Table with 4 columns: QTY, DESIG, PART NO, and DESCRIPTION. Lists various components like harness assemblies and lamps.

Table with 4 columns: QTY, DESIG, PART NO, and DESCRIPTION. Lists various components like terminal strips, transformers, resistors, and fuses.

- Optional keylock when specified by customer. See Note 8. Pack Key in Poly Bag 900148 & attach to inside of Dial Plate w/yellow Tape 900118.

MANUFACTURING INSTRUCTIONS: See Drawing #600526 for Layout/Assembly of Front Panel. See Drawing #600554 for Mechanical Assembly Instructions.

Table with 4 columns: REV, AUTH, DESCRIPTION, and DATE. Shows revision history for the drawing.