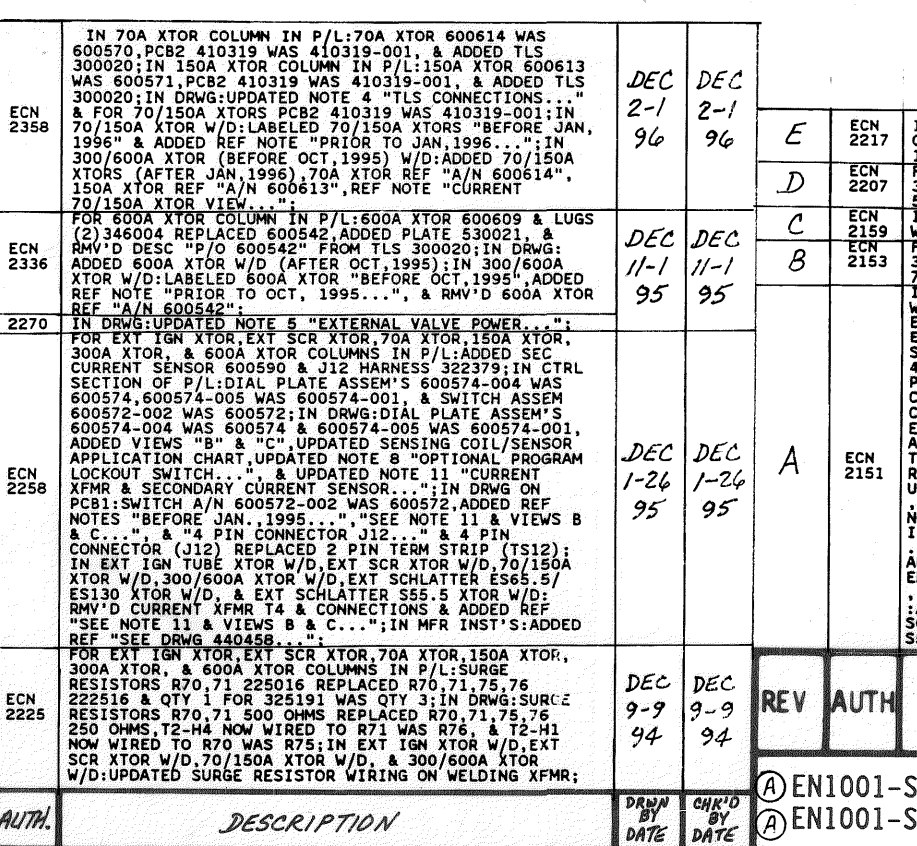
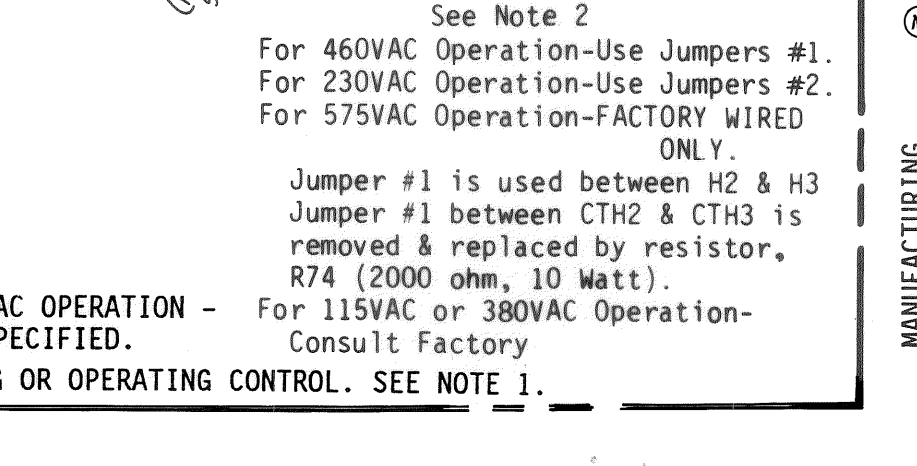
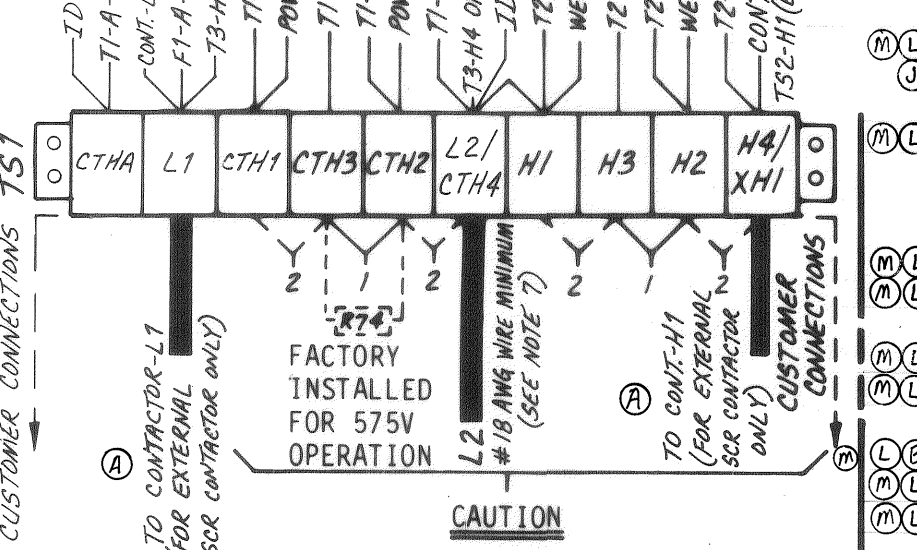
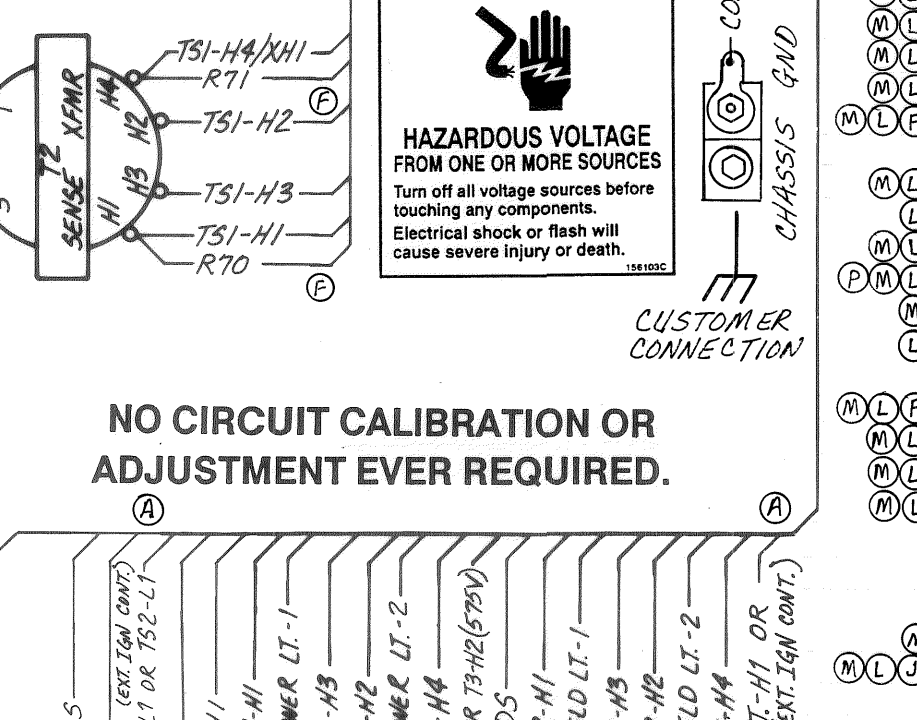
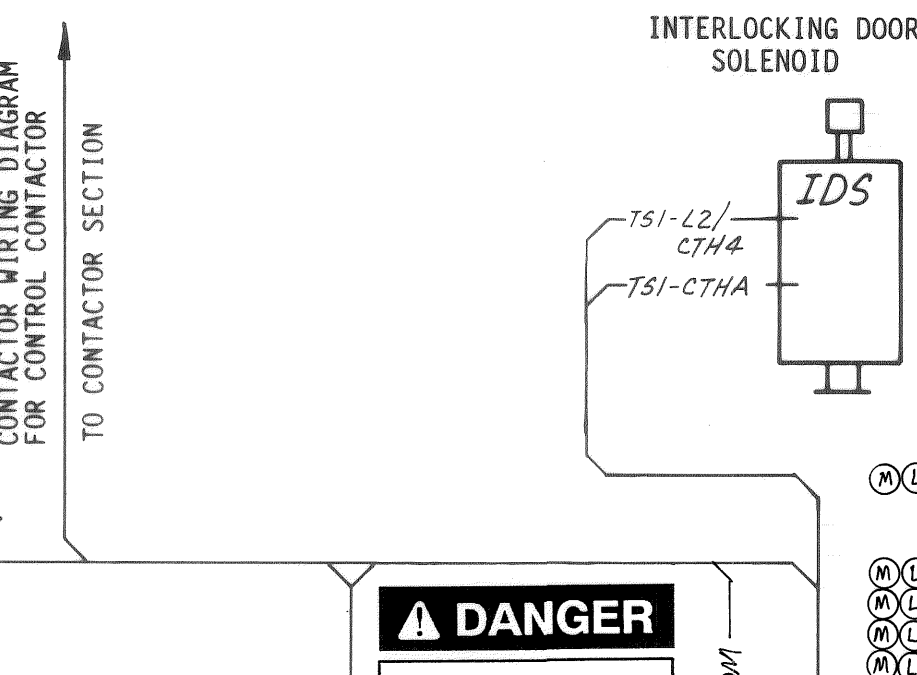


COIL/SENSOR MODEL NUMBER	CURRENT TRANSFORMER OR SECONDARY CURRENT SENSOR PART NUMBER	CONTACTOR SIZE	DESIG.	PART NO.	DESCRIPTION
P2 - 200S	A/N 600575	OBsolete	X	X	X
P2 - 200S	A/N 600575-001	OBsolete	X	X	X
P2 - 200S	A/N 600575-002		X	X	X
P2 - 200S	A/N 600575-003		X	X	X
P5 - 500S	A/N 600575	OBsolete	X	X	X
P5 - 500S	A/N 600575-001	OBsolete	X	X	X
P5 - 500S	A/N 600575-002		X	X	X
P5 - 500S	A/N 600575-003		X	X	X
P10 - 1000S	A/N 600575	OBsolete	X	X	X
P10 - 1000S	A/N 600575-001	OBsolete	X	X	X
P10 - 1000S	A/N 600575-002		X	X	X
P10 - 1000S	A/N 600575-003		X	X	X
S	A/N 600590 & A/N 322379		X	X	X
S10	A/N 600665 & A/N 322475		X	X	X



QTY.	DESIG.	PART NO.	DESCRIPTION
1		600574-004	Assem., Dial Plate, EN1001, Consisting of:
1		600574-005	Assem., Dial Plate, w/Keylock, EN1001, Consisting of:
1		600572-002	Assem., Switch, Sequence Control & Display Bd.
1		600531-001	Assem., Switch, Keylock, Momentary, SPDT
1		515104	Illustrated Panel, Dial Plate, EN1001
1		565003	Panel, Display Window, Red Filter, EN1001
1			Hole Plug, 3/4" Diam., Black
1		305001	Lamp, Neon, Red, 230V
1		305002	Lamp, Neon, Clear, 230V
1		J2-J2	Assem., Harness, Control Bd. to Terminal Bd.
1		J3	Assem., Harness, Power, 150A,300/600/1200A Cont's
1		J3	Assem., Harness, Power, External IGN Tube Cont's
1		J3	Assem., Harness, Power, External SCR Contactors

QTY.	DESIG.	PART NO.	DESCRIPTION
1		TS1	Terminal Strip, 10 Pin, (Part of J3 Harness)
1		311002	Transformer, Valve, 150VA
1		322311	Assem., Harness, IGM Firing Module to Term. Bd.
1		310001	Transformer, Control, (Part of J3 Harness)
1		310002	Transformer, Sense, (Part of J3 Harness)
1		311001	Transformer, Valve, 50VA
1		311016	Transformer, Valve, 50VA, 575V
1		SEE CHART	Assem., Transformer, Current, 200S, P2
1		SEE CHART	Assem., Transformer, Current, 500S, P5
1		SEE CHART	Assem., Transformer, Current, 1000S, P10
2		R70, 71	Resistor, Power, Surge, 500 Ohm, 100W
2		R72, 73(PCB3)	Resistor, Ignitor, 5 Ohm, 50W, (Part of 410318)
1		R74	Assem., Resistor, Power, 2000 Ohm, 10W, (For 575V)
1		R01	Resistor, Metal Oxide, .1 Ohm, 1W, (Part of Curry Xfmr)
1		309010	Fuseholder, 1 Pole, Mini, 600V
3		307024	Fuse, Control, 1/4A, FNQ-R-1/4 or KLRD-1/4
3		307025	Fuse, 1 Amp, Slow Blow, 2AG, (Part of 410319 & Fuse, 1 Amp, Slow Blow, 2AG, (Part of 410319-001)
1		307010	Fuse, Ignitor, 6 Amp, BAF 6, (Part of 410318)
1		325191	Assem., Wire, Surge Resistor, 18 GA., Black
1		325149	Assem., Wire, Valve Transformer, 22 GA., Blk.
1		600590	Assem., Secondary Current Sensor (S)
1		322379	Assem., Harness, Secondary Current Sensor
1		600613	Assem., Contactor, Thyristor, Air, 150A, 460/575V, w/TL5
1		600520	Assem., Cont., Thyristor, Air, 300A, 460/575V, w/TL5
1		346004	Lug, 5/16" Bolt to 2/0 Wire, 600A Cont., L1 & H1
1		600669	Assem., Cont., Thyristor, Water, 600A, 460/575V
1		300020	Switch, Temp. Limit, (Part of 600520 & 600613)
1		346002	Lug, 5/16" Bolt to 4/0 Wire, 1200A Cont., L1 & H1
1		600670	Assem., Cont., Thyristor, Water, 1200A, 460/575V
1		410319	Assem., PCB, Terminal Strip Board, EN1001
1		410319-001	Assem., PCB, Term. Strip Bd., Ext. Firing, EN1001
1		410318	Assem., PCB, IGM Firing Module
1		510236	Plate, Mounting, Terminal Strip Board
1		600667	Assem., Secondary Current, 6" Coil Rogowski
1		600668	Assem., Secondary Current, 10" Coil Rogowski
1		322475	Assem., Harness, Secondary Current, Rogowski Coil
1		346004	Assem., Interlocking Door Solenoid, 2/0 Wire
1		314001	Coil Assem. Only, IDS
1		510015	Cabinet, "S" Subcompact
1		510017	Door, Cabinet, "S"
1		700120	Manual, EN1001
1		421271	Logic Diagram, EN1001 Control
1		421270	Wiring Diagram, EN1001-Series, "S" Cabinet