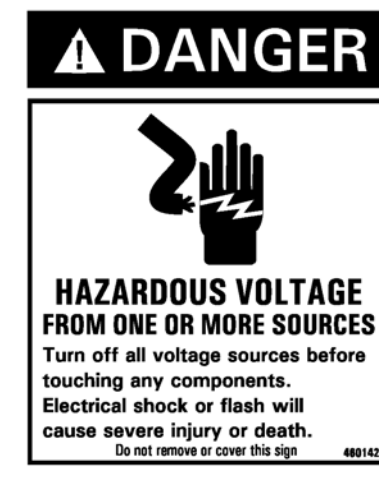


CAUTION - READ MANUAL & ALL NOTES BEFORE INSTALLING OR OPERATING CONTROL. SEE NOTE 1



CAUTION Control shipped wired for 460 VAC operation unless otherwise specified - See Note 2.

PARTS LIST - CONTROL SECTION			
QTY.	DESIG.	PART NO.	DESCRIPTION
1	0	600635	Assem., Dial Plate, w/Sw. Assem., EN1500, Consisting of:
1	PCB1	600635-001	Assem., Dial Plate, w/Sw. Assem. & Keylock, EN1500, Consisting of:
0	SM1	600636	Assem., Switch, Sequence Control & Display Board
1	1	600531-001	Assem., Switch, Keylock, Momentary, SPDT
1	1	540288	Illustrated Panel, Dial Plate, EN1500
1	1	515104	Panel, Display Window, Red Filter, EN1500
1	1	565033	Hole Plug, 3/4" Diam., Black, (For Keylock Switch Hole)
1	1	565013	Hole Plug, 3/8" Diam., Black, (For Rotary Board Hole)
X	PCB11	410350	Optional Assem., PCB, Rotary Input Board
X	J4-J4	319008	Knob, Skirted Round, w/ Indicator, Black
X	J4-J4	322447	Assem., Harness, Ctrl Bd. to Rotary Input Bd., 7" Long
1	J2-J2	SEE CHART	Assem., Harness, Sequence Ctrl Bd. to Terminal Strip Bd.
1	J3	SEE CHART	Assem., Harness, Power, EN1500-FPX(SCR), 11 x 11 Flat Plate
1	PWR.LT	305001	Lamp, Neon, Red, 230V
1	M.D.LT	305002	Lamp, Neon, Clear, 230V

PARTS LIST - CONTACTOR SECTION			
QTY.	DESIG.	PART NO.	DESCRIPTION
1	TS1	335034	Terminal Strip, 10 Pin, (Part of J3 Harness)
1	T1	310001	Transformer, Control, (Part of J3 Harness)
1	T2	310002	Transformer, Sense, (Part of J3 Harness)
2	R70,71	225016	Resistor, Power, Surge, 500 Ohm, 100W
1	F1	308010	Fuseholder, 1 Pole, Mini, 600V
1	F1	307024	Fuse, Control, 1/4A, FNQ-R-1/4 or KLD-R-1/4
1	F1	307022	Fuse, 1 Amp, Slow Blow, 246, (Part of 410319-001)
1	(R70,71)	325024	Assem., Wire, Surge Resistor, 18 Ga., Black
1	PCB2	410319-001	Assem., PCB, Terminal Strip Board, EN1500
1		510245	Assem., 11 x 11 Flat Plate, EN1500-FPX(SCR)
1		700150	Manual, EN1500
1		421358	Logic Diagram, EN1500 Control
1		421362	Wiring Diagram, EN1500-FPX(SCR), 11 x 11 Flat Plate

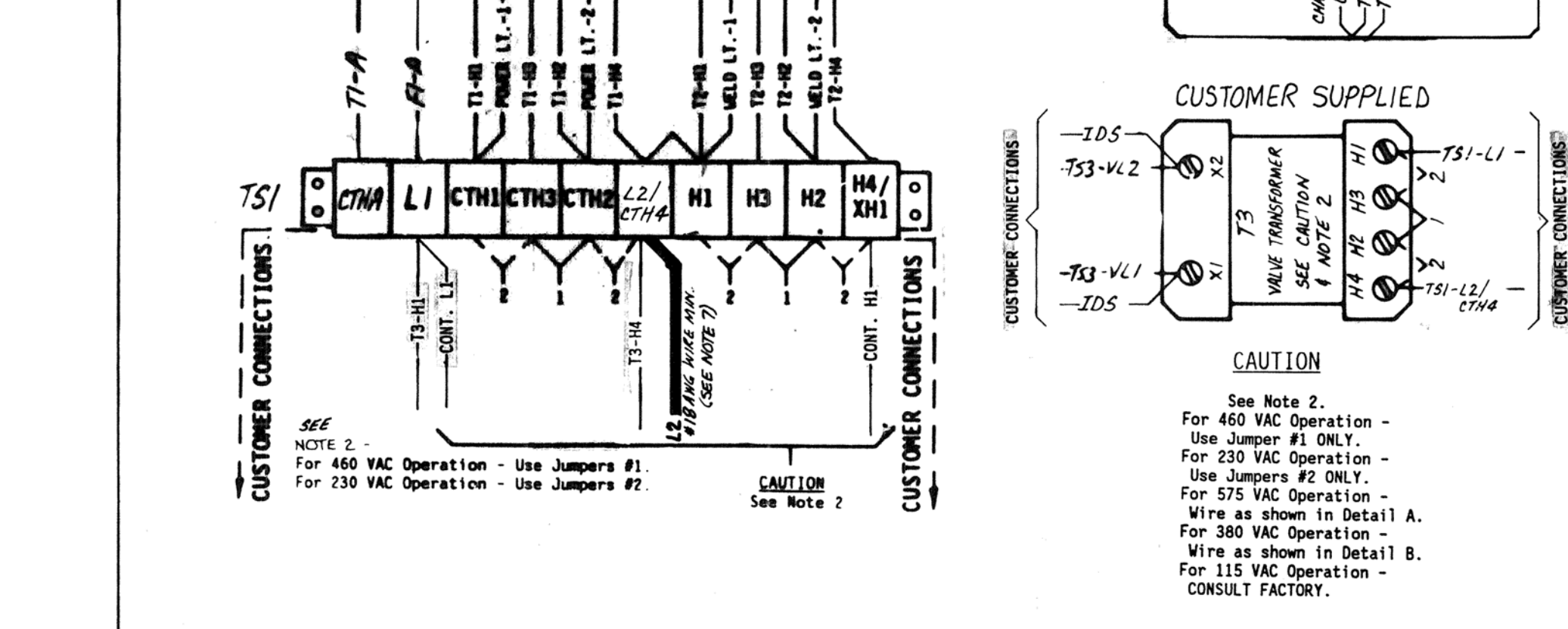
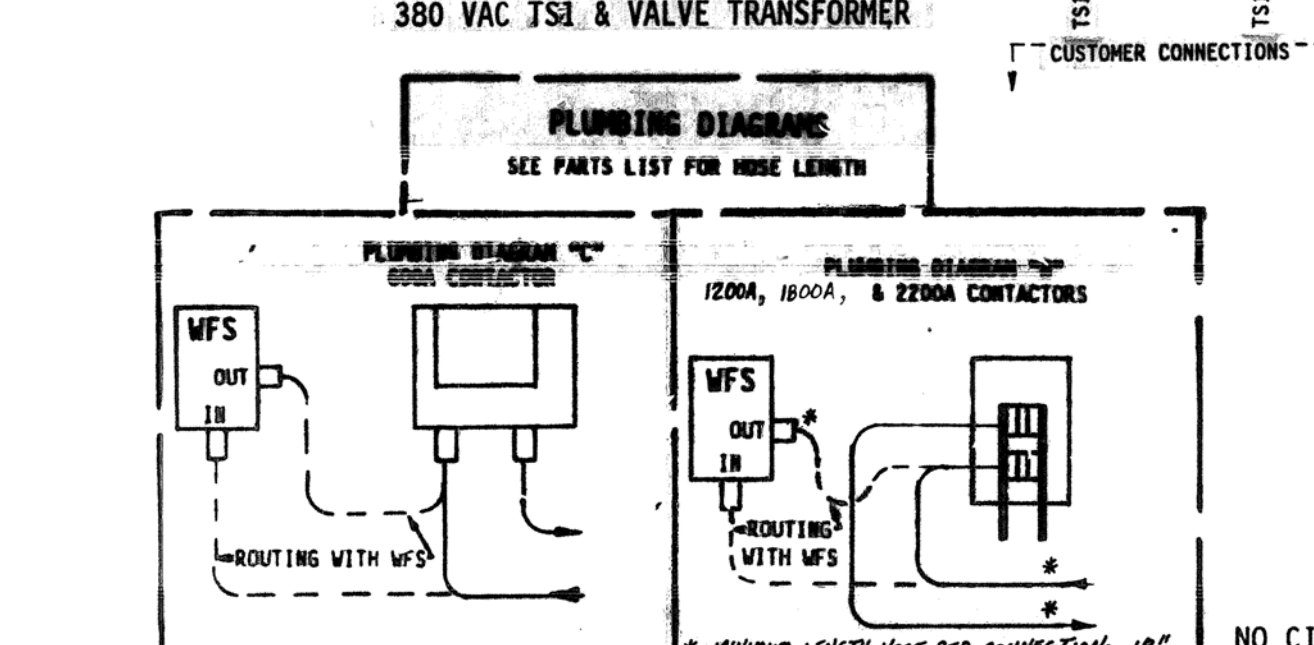
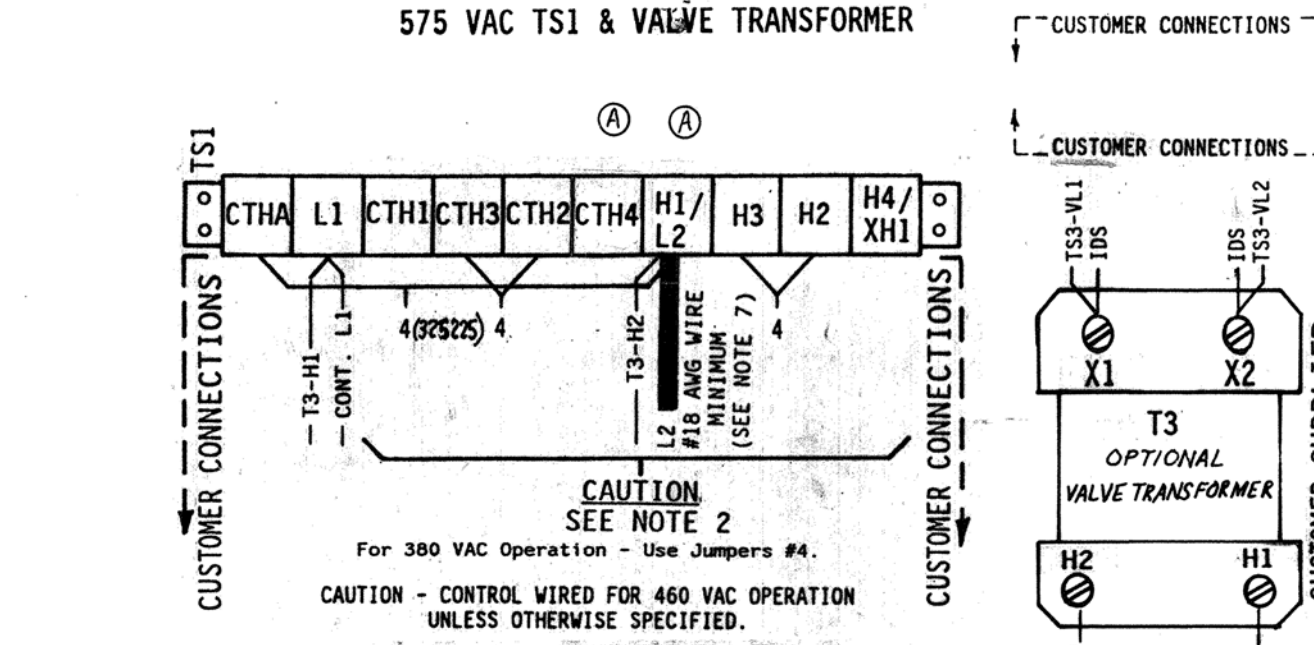
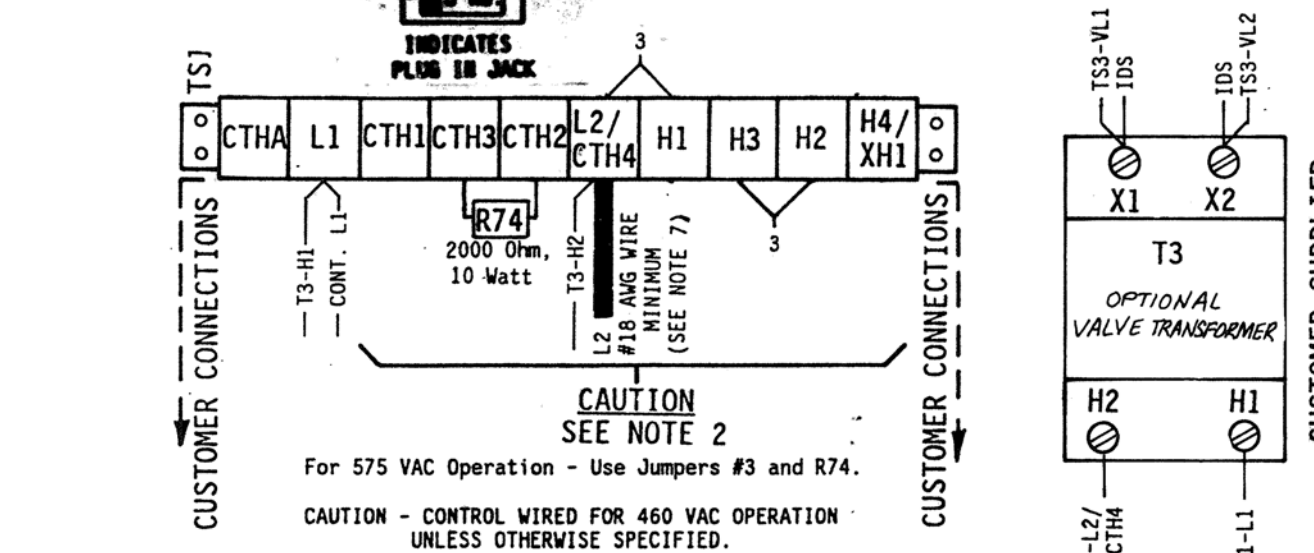
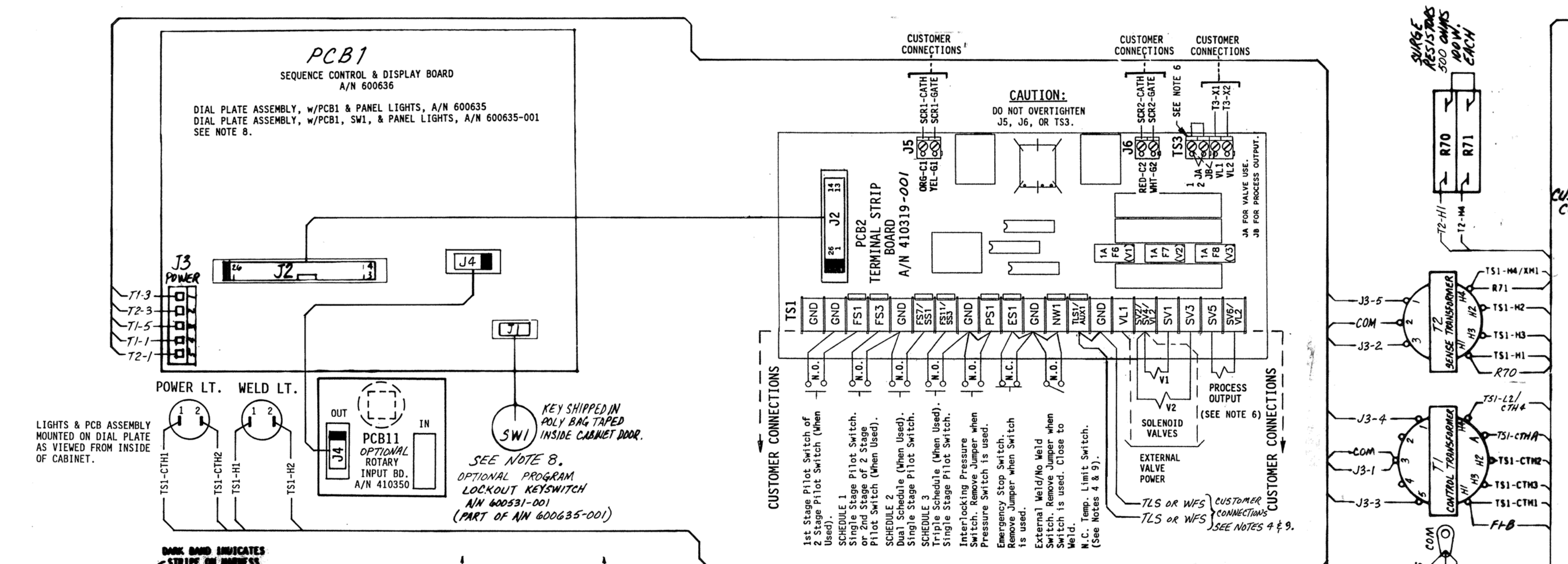
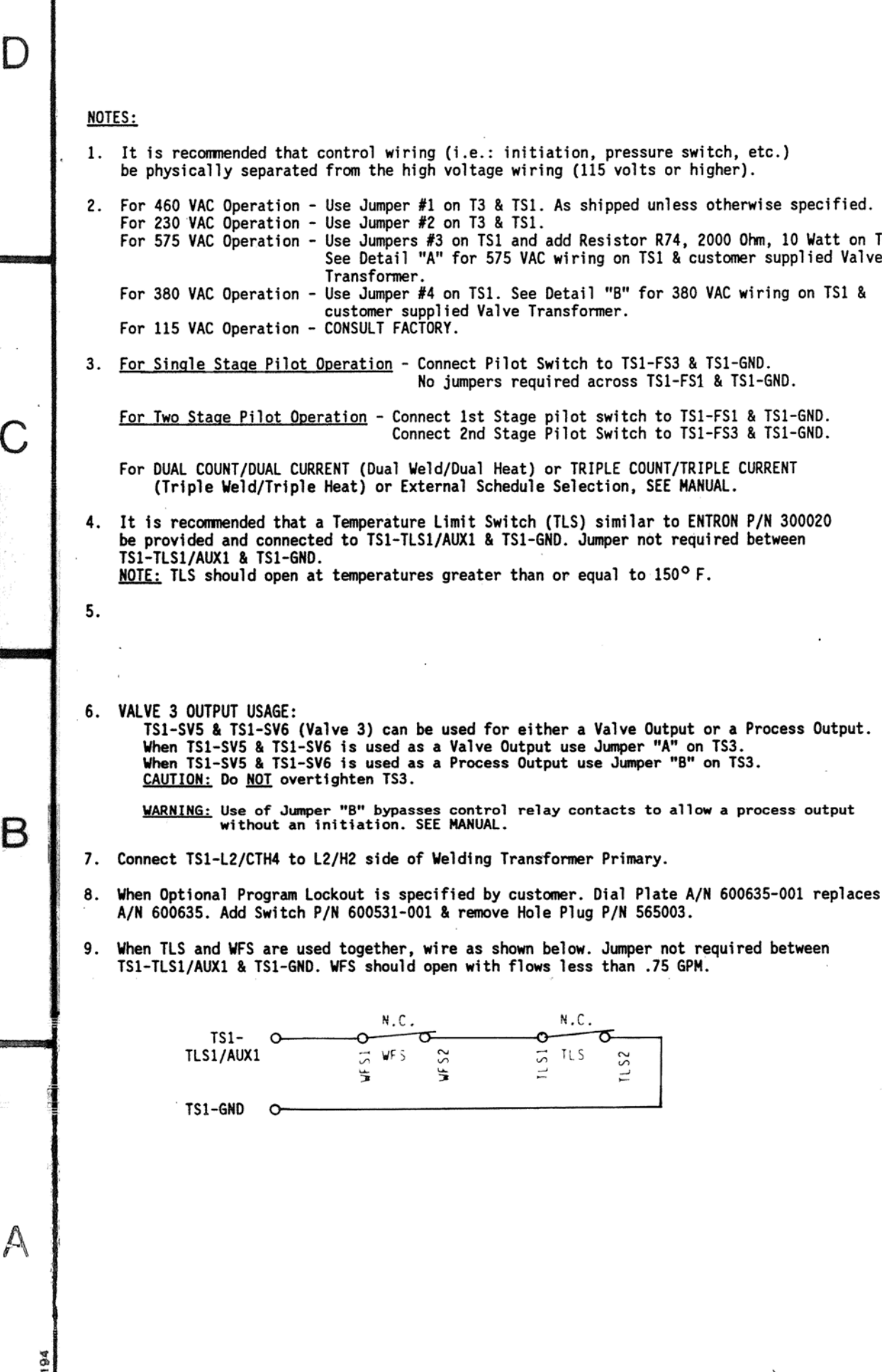
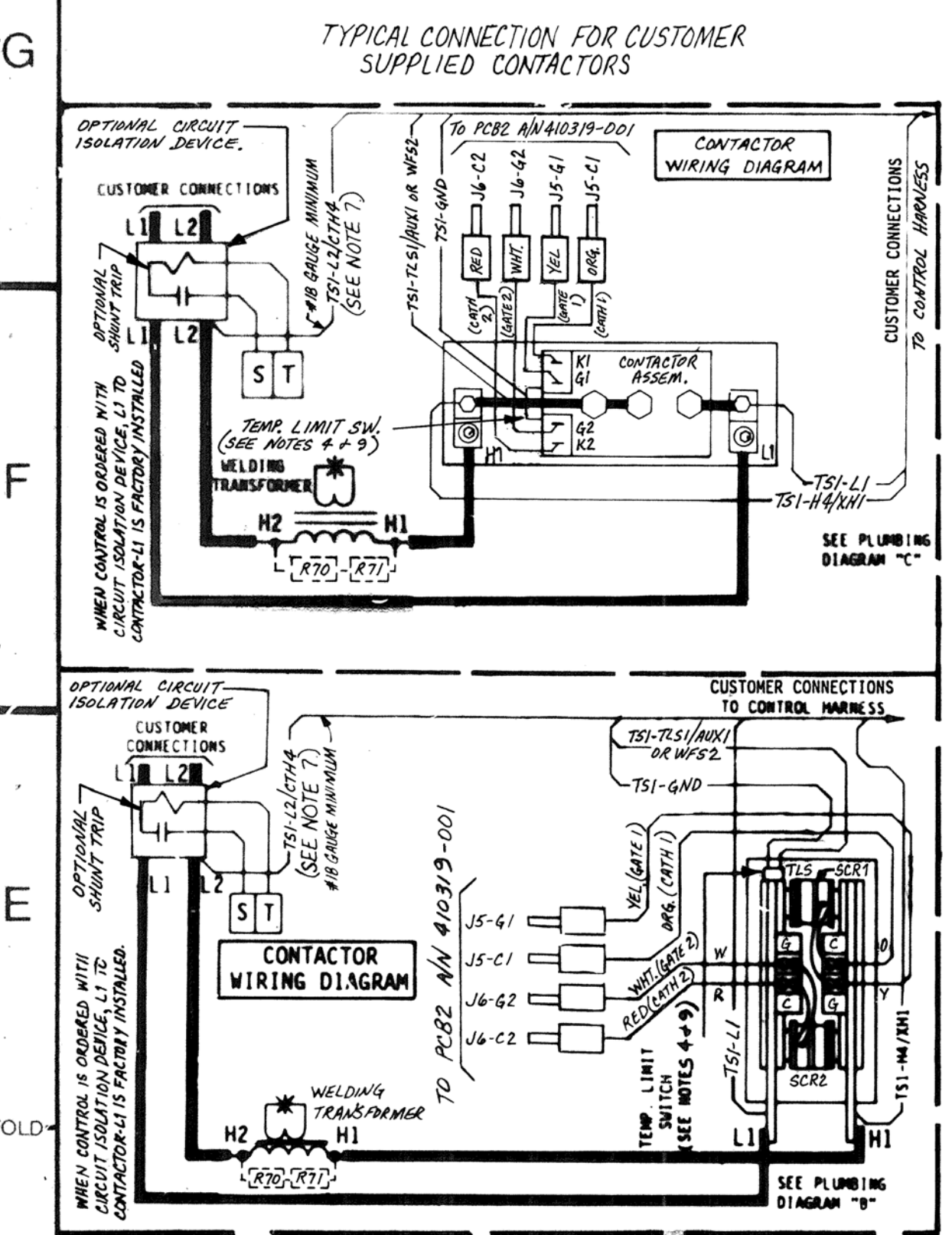
0 Optional Keylock when specified by customer. See Note 8. Pack Key in Poly Bag 900148 & attach to inside of Dial Plate w/ Yellow Tape 900118.

X Optional. Add quantity one (1) PCB11 Rotary Input Board when specified by customer. Remove Hole Plug P/N 565013 when PCB11 is specified. Supply quantity one (1) each of J4-J4 Harness Assembly & Knob when optional PCB11 is specified.

See Drawing #440450-001 for mounting detail of Flat Plate (FPX).
Tape one (1) Poly Bag P/N 900148 to Flat Plate using Tape P/N 900118, & include the following in the bag:
4 Each #6-32 x 1/4" PHMS, Phil., Black P/N 557004
4 Each #6-32 x 1/4" A/F Hex Nut P/N 557018
4 Each #6-32 x 1/2" Standoffs P/N 555031
4 Each #6-32 x 1/4" PHMS, Phil., Brit. P/N 557003
1 Each Label, "Danger, Hazardous Voltage..." P/N 460142/RWMA156103C
1 Each Label, "Warning, Voltage and Flash Hazard..." P/N 460143/RWMA156103A
1 Each Label, "Voltage Hazard, Earth GND..." P/N 460144/RWMA156103D
1 Each Label, "Warning, Water Hose Burst Hazard..." P/N 460145/RWMA156103E
1 Each Label, "Warning, Hazardous Voltage..." P/N 460146/RWMA156103F
1 Each Label, "Caution, Do Not Pinch Wires..." P/N 460170
1 Each Resistor, Power, 2000 Ohm, 10W, (For 575 VAC) P/N 600048
1 Each Resistor, Power, 500 Ohm, 10W, (For 380 VAC) P/N 325225
1 Each Jumper, TS1, (For 380 VAC Operation) P/N 325225

When Control is wired for either 230/460/575 VAC operation, add quantity one (1) TS1 Label P/N 460201 for 380 VAC Operation.
When Control is wired for 380 VAC operation, add quantity one (1) TS1 Label P/N 460105 for 230/460/575 VAC Operation.

MANUFACTURING INSTRUCTIONS:
See Drawing #600526 For Layout/Assembly of Front Panel.
See Drawing #600554 For Mechanical Assembly Instructions.
See Drawing #440454 For Packing Instructions.



CAUTION - CONTROL WIRED FOR 460 VAC - UNLESS OTHERWISE SPECIFIED.

FPX FLAT PLATE DESIGNATION	J2-J2 & J3 HARNESS LENGTHS	J2-J2 HARNESS PART NUMBER	J3 HARNESS PART NUMBER
FP3	3 FEET LONG	322437	322438
FP4	4 FEET LONG	322437-001	322438-001
FP5	5 FEET LONG	322437-002	322438-002
FP6	6 FEET LONG	322437-003	322438-003
FP7	7 FEET LONG	322437-004	322438-004
FP8	8 FEET LONG	322437-005	322438-005
FP9	9 FEET LONG	322437-006	322438-006

X = NUMBER DESIGNATIONS 3 THRU 9 OF THE "FPX" REFERENCE FOR J2-J2 & J3 HARNESS LENGTHS.
NOTE: HARNESS LENGTHS ARE MEASURED FROM THE EDGE OF FLAT PLATE TO SEQUENCE CONTROL DISPLAY BOARD.

NOTICE FOR SERVICE ON THIS CONTROL
Contact Your Machine Dealer Or
ENTRON CONTROLS LLC.
DIRECTLY: (864) 416-0190
1402 S. BATESVILLE RD.
GREENSBORO, NC 27405
FAX# (864) 416-0195

ENTRON ORIGINAL RELEASE

REV	AUTH	DESCRIPTION	DRWN BY	CHK BY	DATE	DATE

SCALE: DATE: DRAWN BY: CHK'D BY: APPROVED BY:

TOLERANCE UNLESS SPECIFIED: ANGLES: ± 1/8° DECIMALS: ± .010 FRACTIONS: ± 1/64

WIRING DIAGRAM, EN1500-FPX(SCR), 11 X 11 FLAT PLATE, WIRED FOR SELECTION 230/380/460/575 VAC OPERATION (FOR FPX DESIGNATION, SEE CHART)

REV	AUTH	DESCRIPTION	DRWN BY	CHK'D BY	DATE	DATE

EN1500-FP3(SCR) EN1500-FP4(SCR) EN1500-FP5(SCR) EN1500-FP6(SCR) EN1500-FP7(SCR) EN1500-FP8(SCR) EN1500-FP9(SCR)

NEXT ASSUMED ON: DRAWING NUMBER: 421362- B