

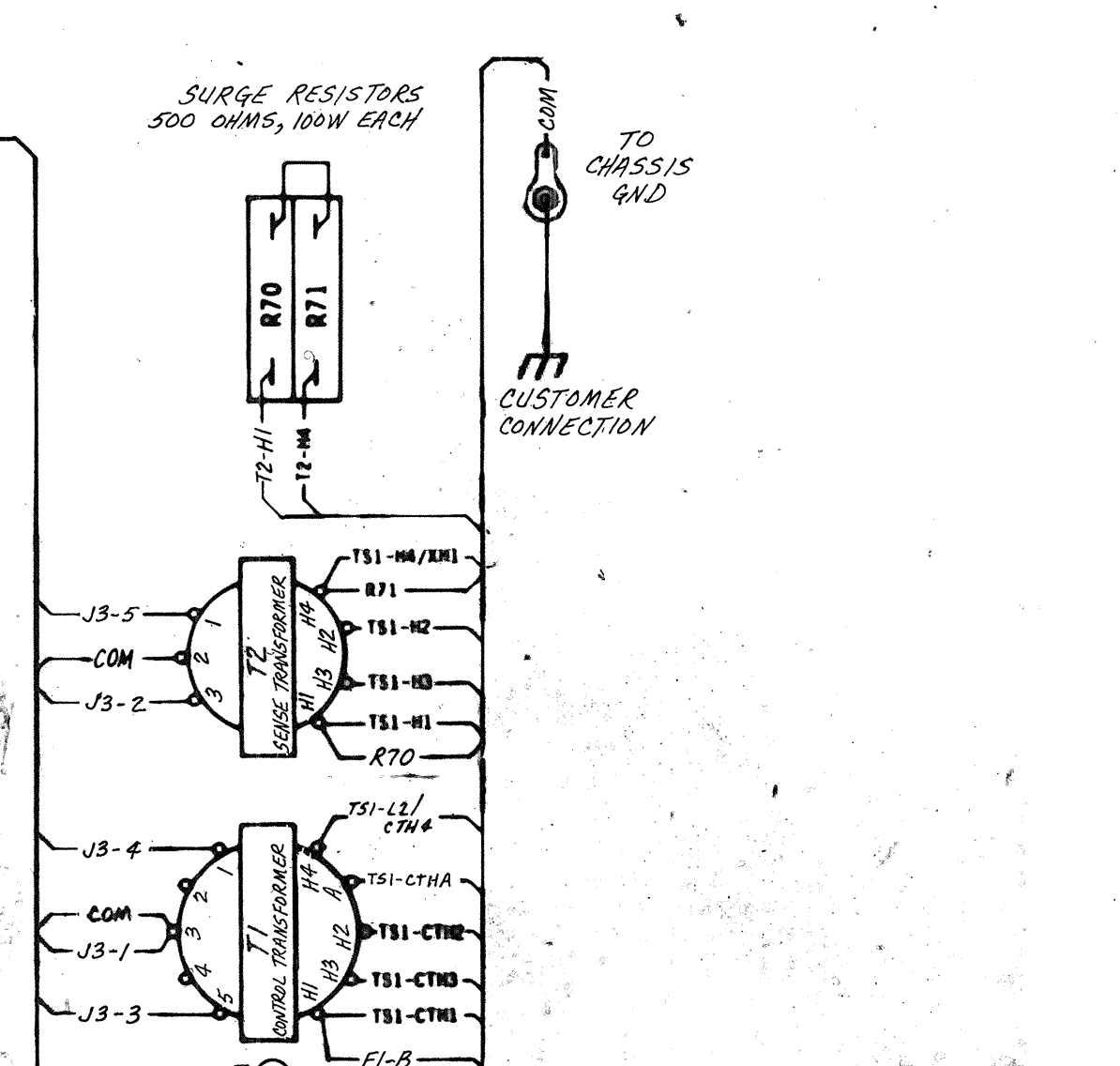
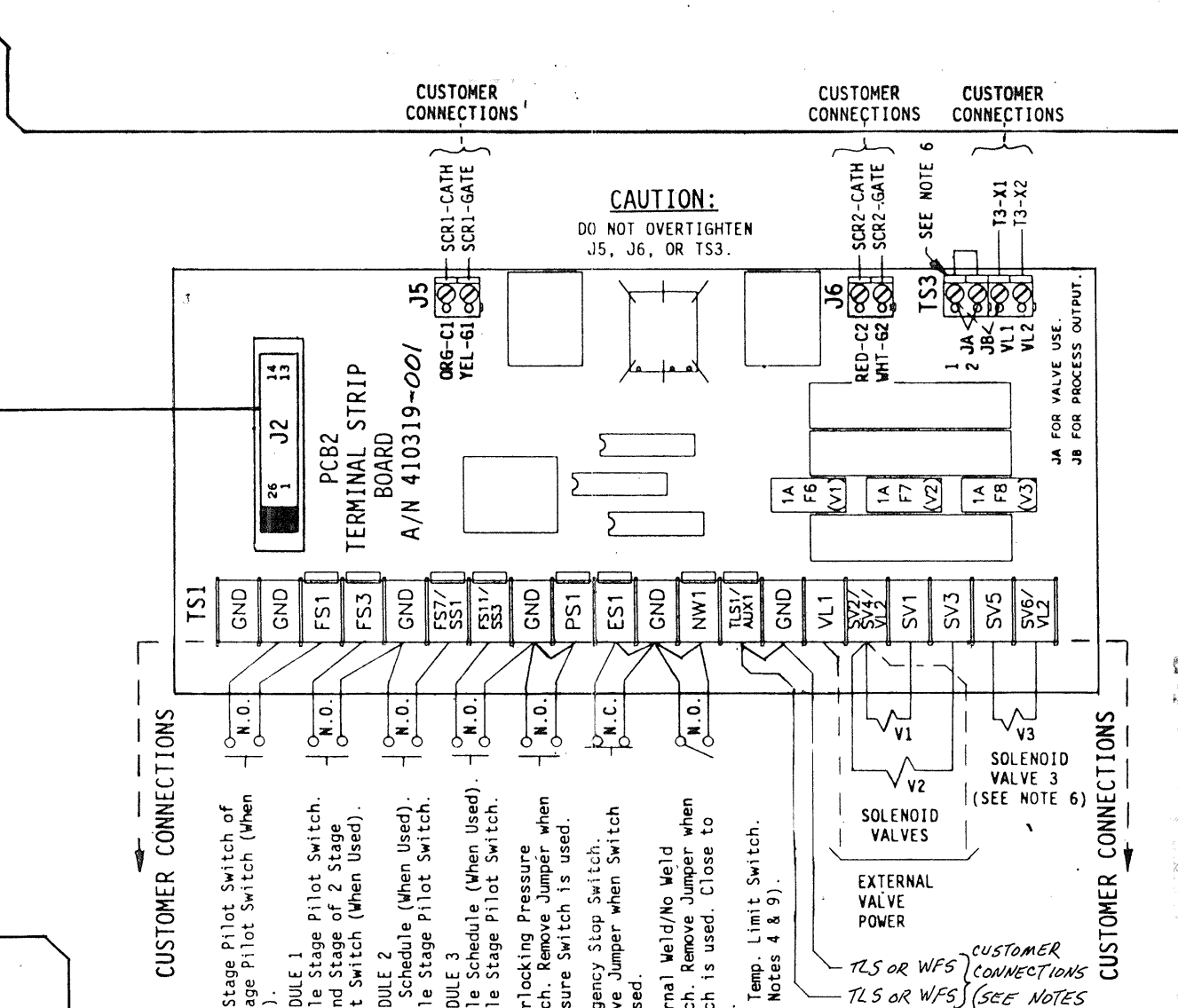
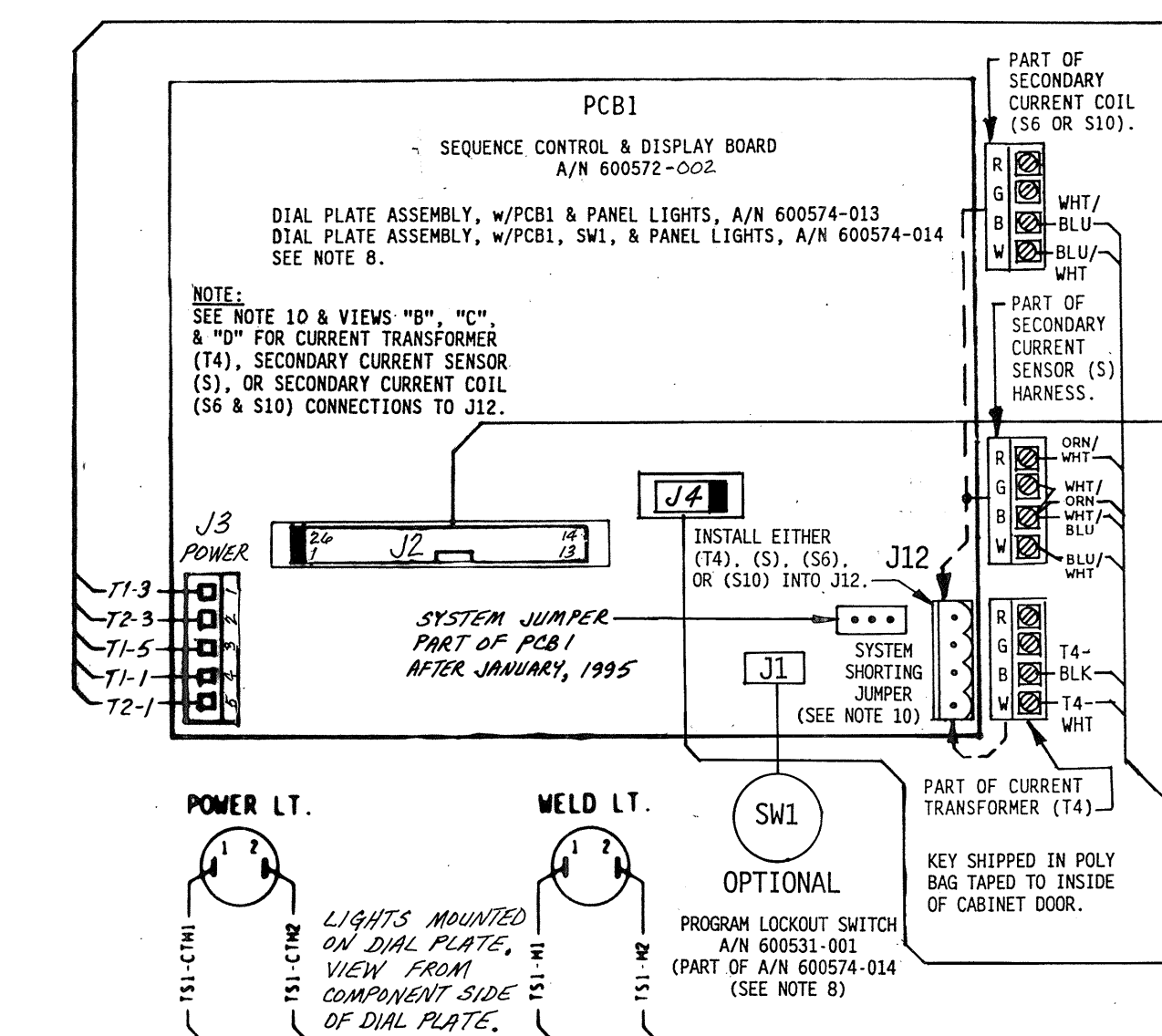
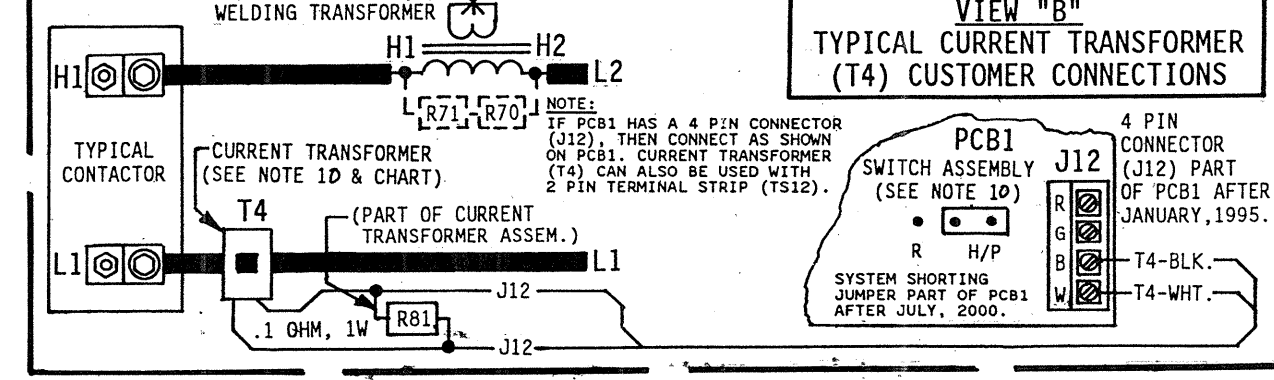
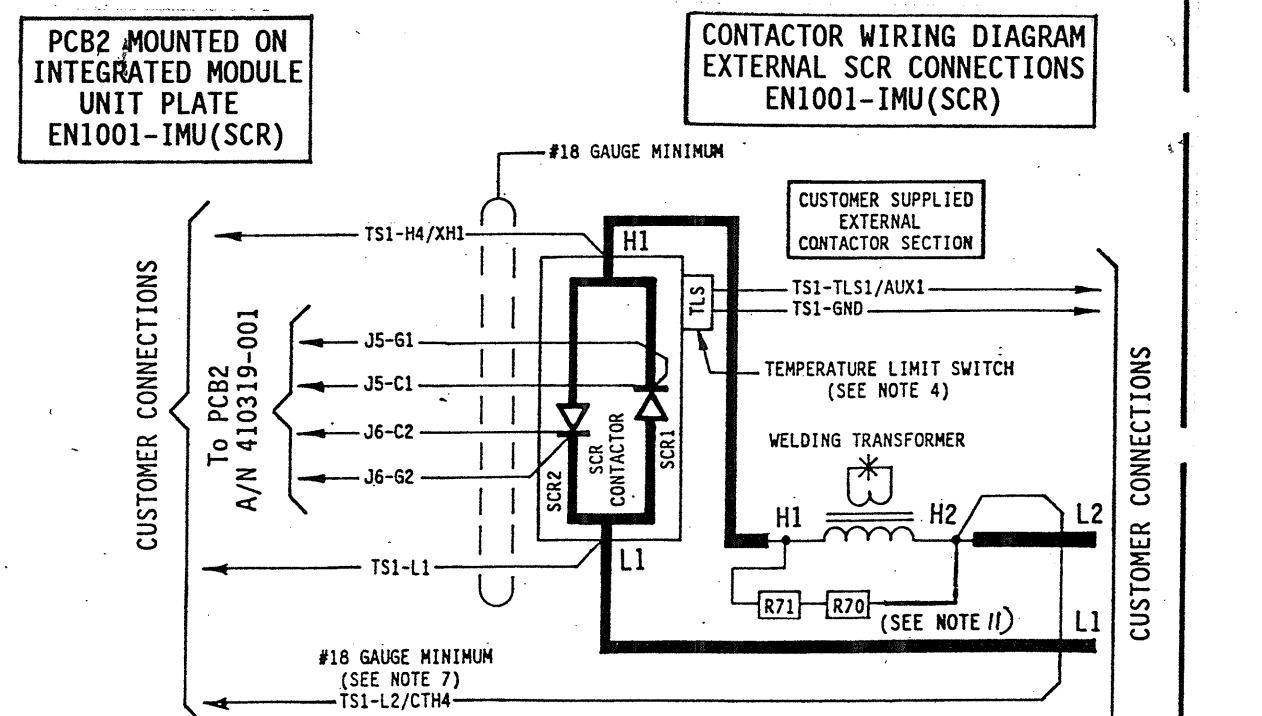
Table with 3 columns: COIL/SENSING MODEL NUMBER, CURRENT TRANSFORMER OR SECONDARY CURRENT SENSOR PART NUMBER, and CONTACTOR SIZE EXTERNAL FIRING SCR.

CAUTION Control Shipped Wired for 460 VAC Operation Unless otherwise specified - See Note 2.

CAUTION

HAZARDOUS VOLTAGE Turn off all voltage sources before touching any components. Electrical shock or flash will cause severe injury or death.

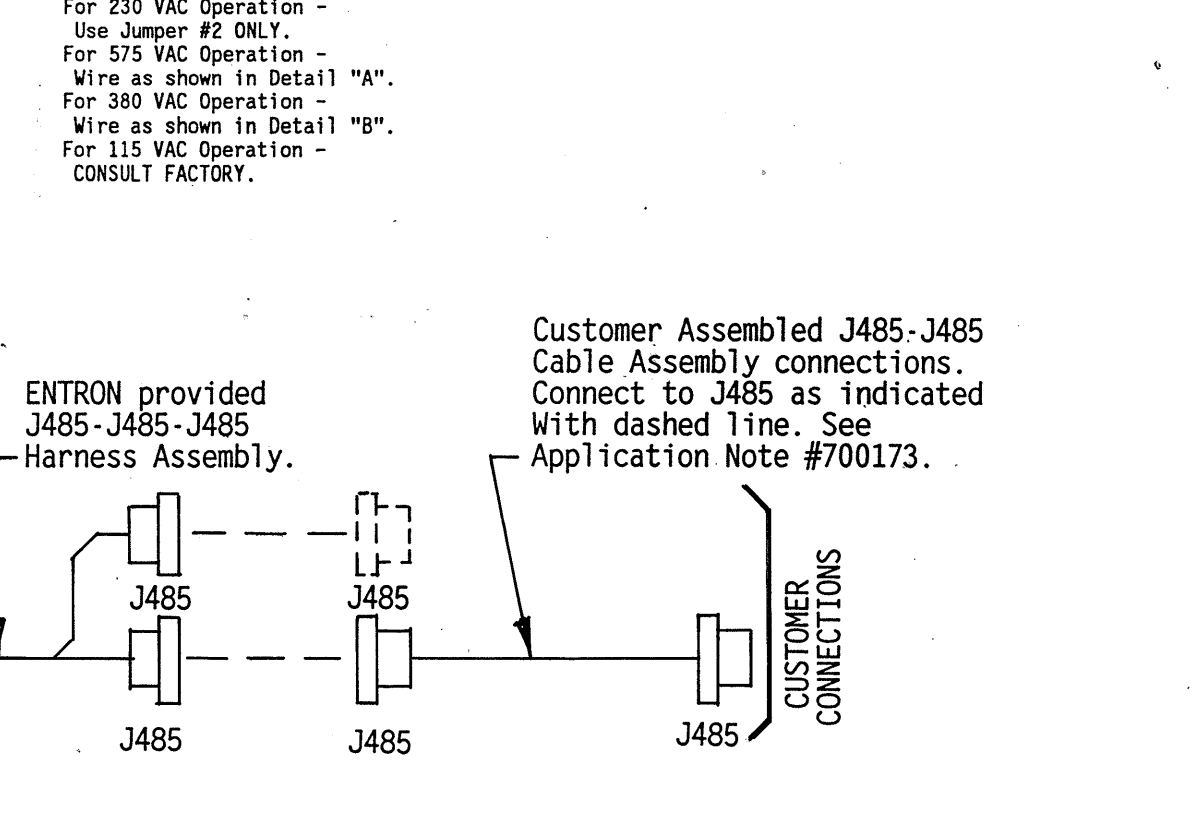
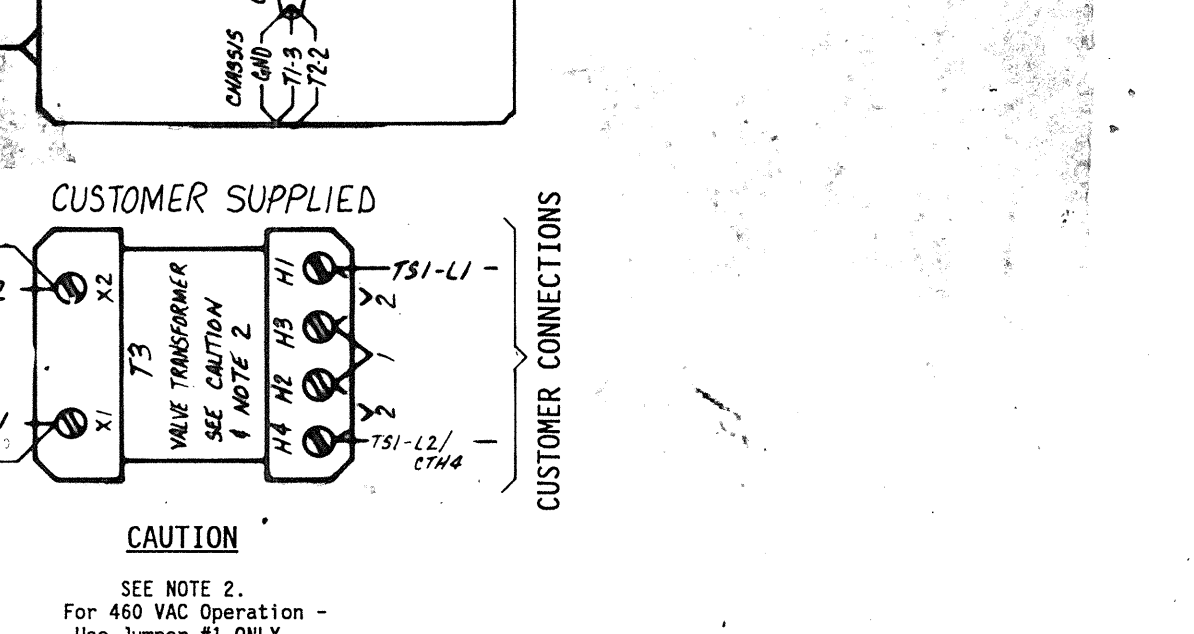
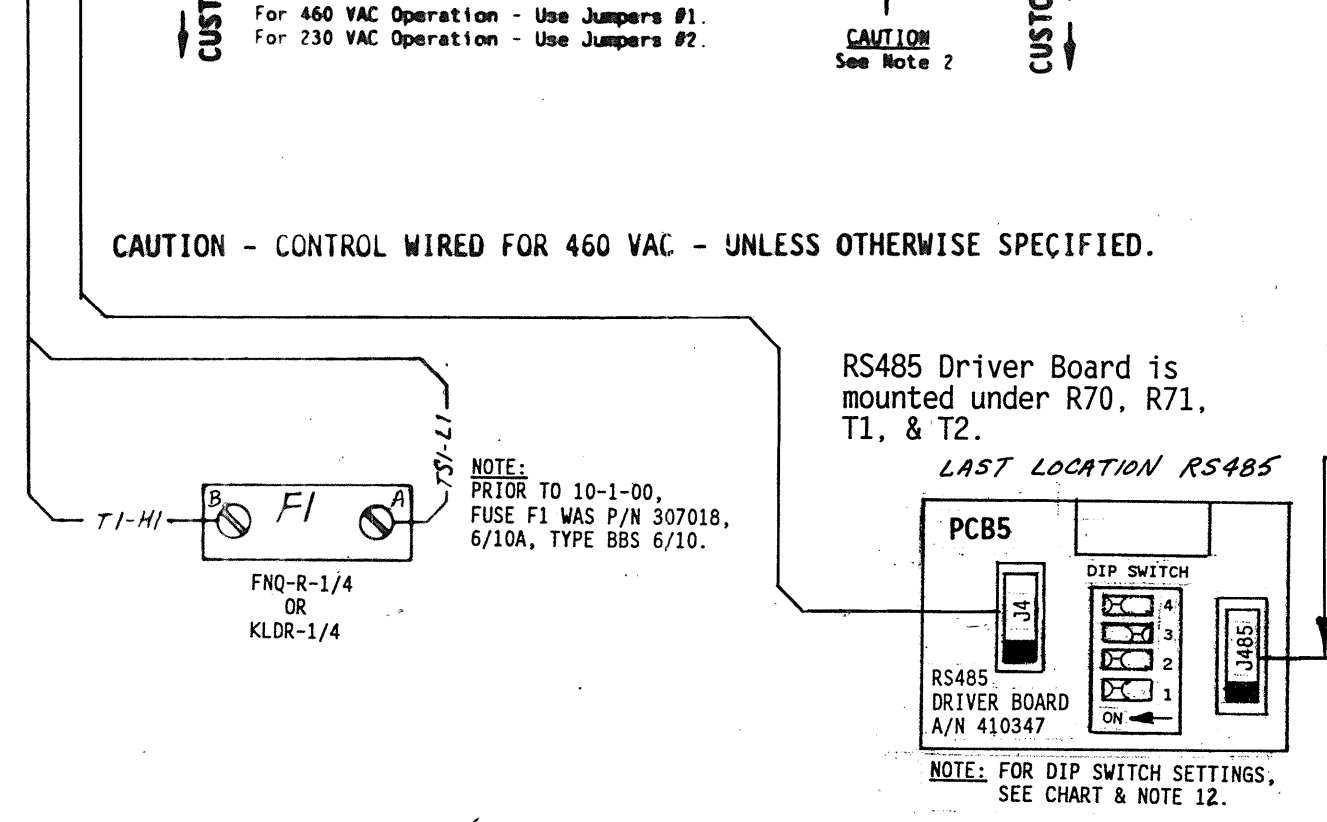
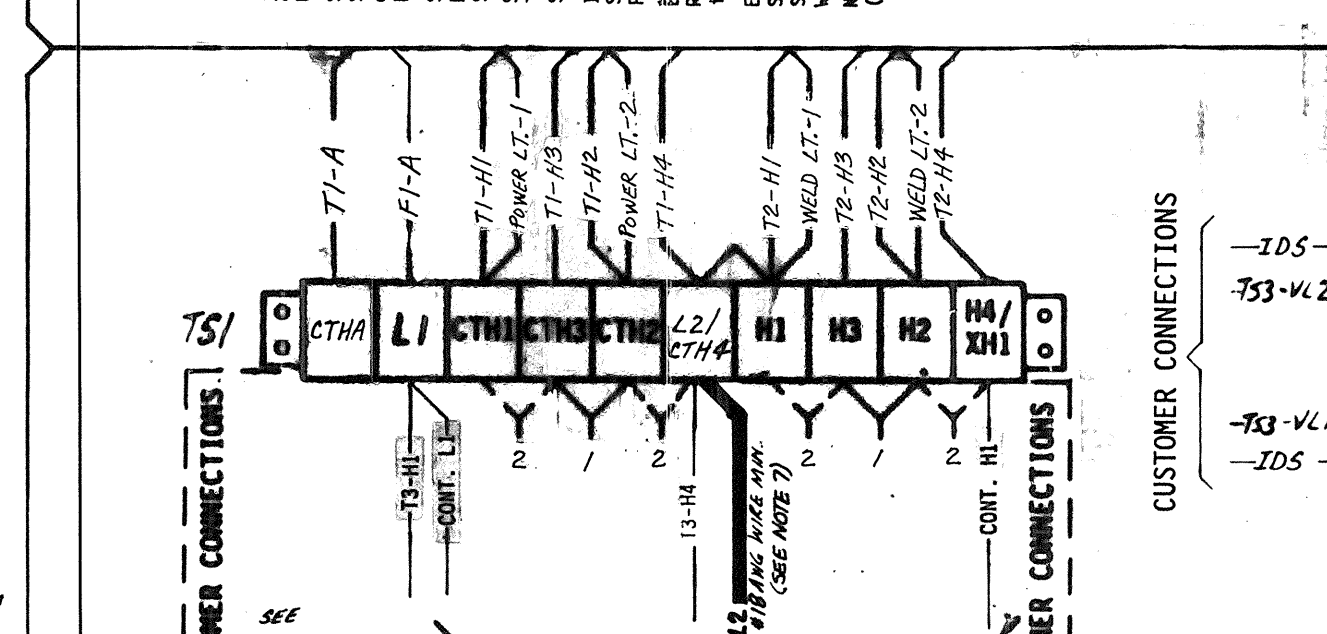
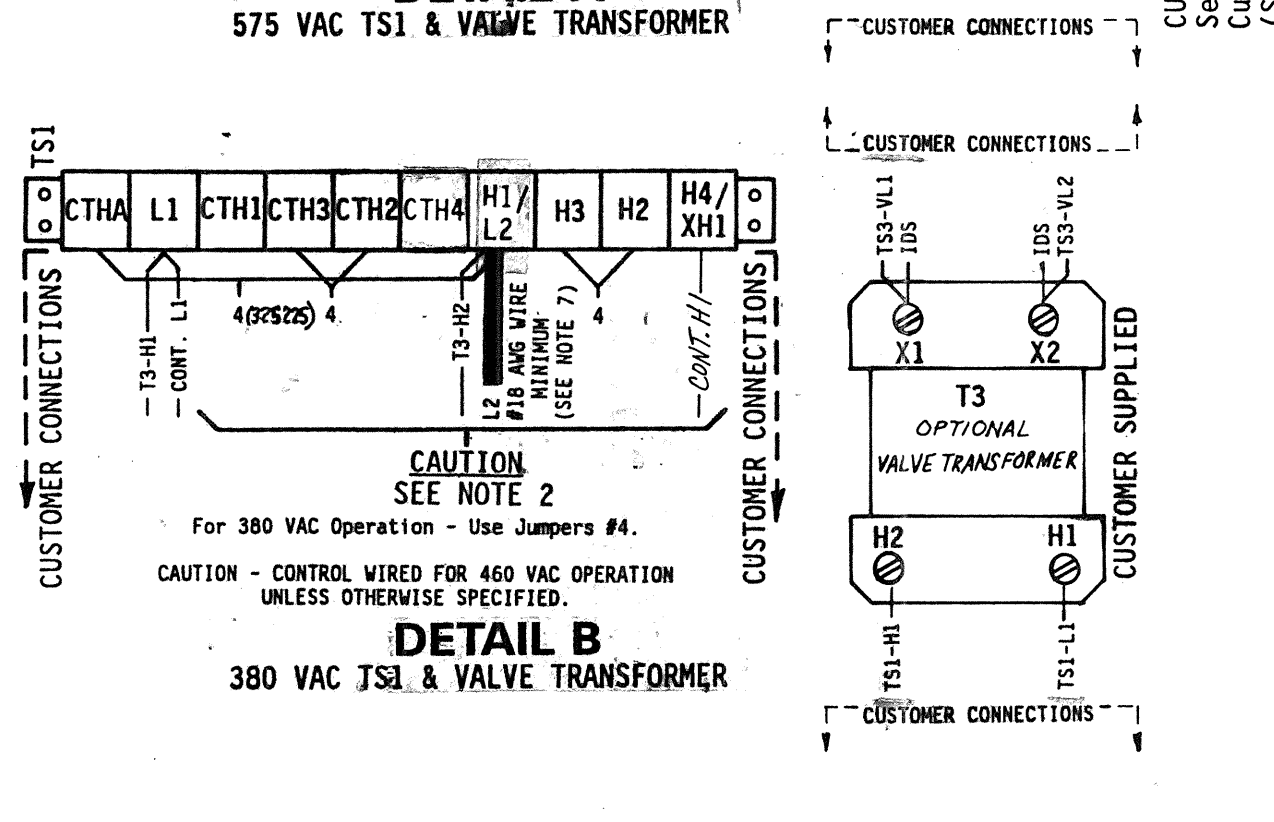
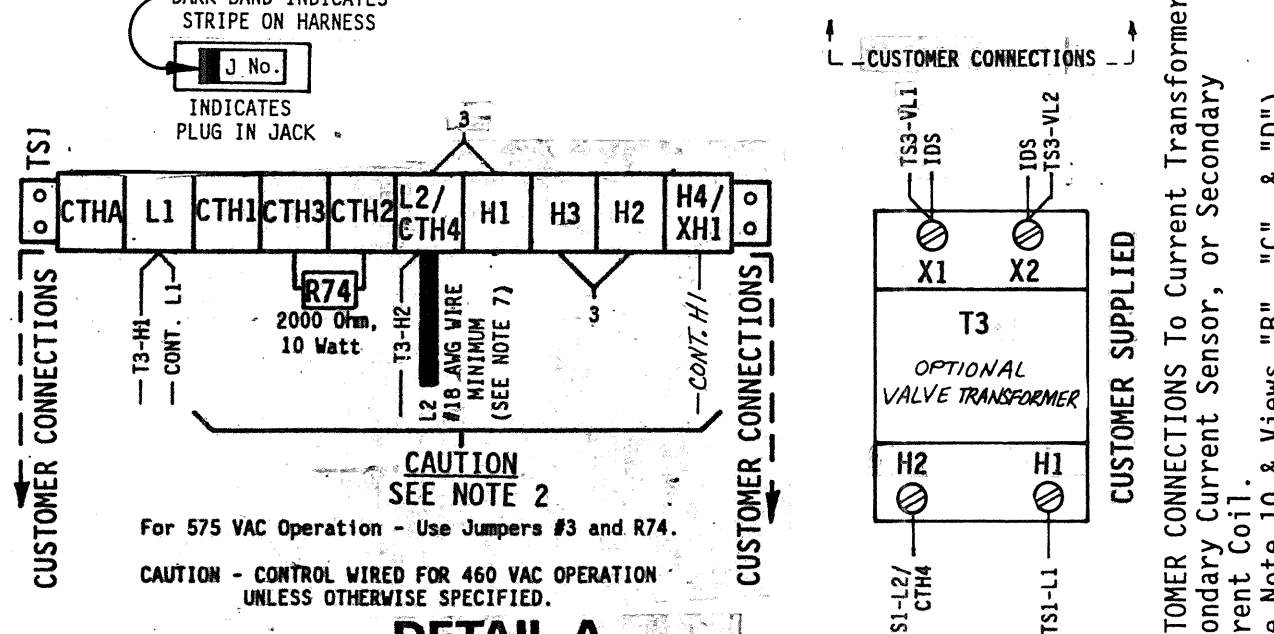
TYPICAL CONNECTIONS FOR CUSTOMER SUPPLIED CONTACTORS.



PARTS LIST - CONTACTOR SECTION

Table with 4 columns: QTY., DESIG., PART NO., and DESCRIPTION. Lists various components like terminal strips, transformers, and resistors.

- NOTES: 1. It is recommended that control wiring... 2. For 460 VAC Operation - Use Jumper #1 on T3 and T51... 3. For Single Stage Pilot Operation - Connect pilot switch to T51-F53 and T51-GND...



PARTS LIST - CONTACTOR SECTION

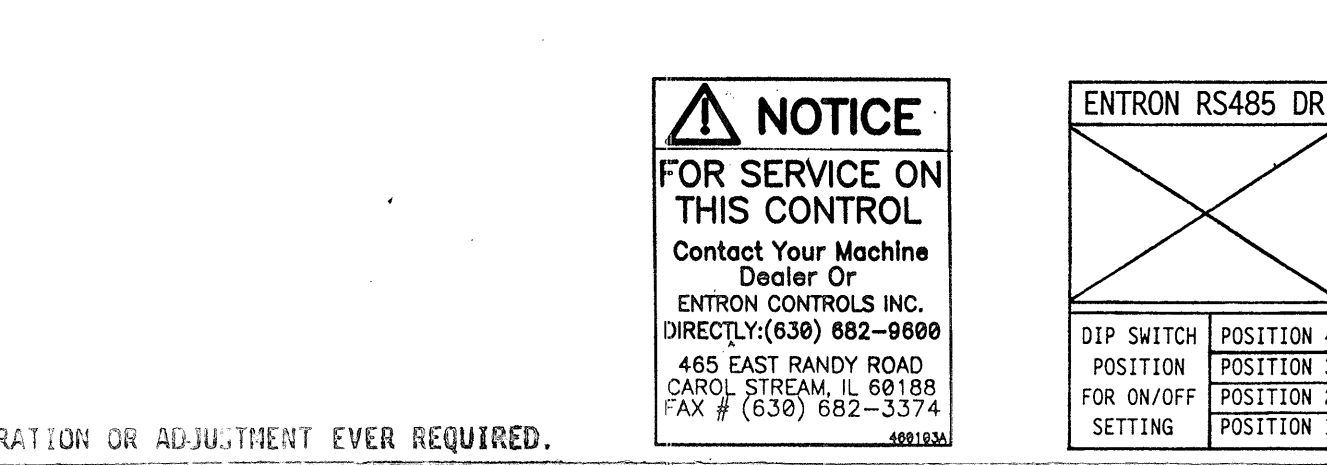
Table with 4 columns: QTY., DESIG., PART NO., and DESCRIPTION. Lists various components like terminal strips, transformers, and resistors.

Optional Keylock when specified by customer. See Note 8. Pack Key in Poly Bag P/N 900148 & attach to inside of Dial Plate w/Flow Tape P/N 900118.

Manufacturing Instructions: See Drawing #600326 for Layout/Assembly of Front Panel. See Drawing #600374 for Mechanical Assembly Instructions.

- 10. CURRENT TRANSFORMER (T4) CONNECTIONS: Wire per view "B". Current Transformer coil (T4) shown installed on L1... 11. EN1001-1MU(SCR): Remove all connections from previously existing firing circuits to L1, L2/H2, & H1...

- 12. DIP Switch settings for positions 1 thru 4 on RS485 Driver Board (PCB5) are set at the factory to default as a last location RS485 in an interconnect arrangement.



ENTRON RS485 DRIVER BOARD DIP SWITCH SETTINGS CHART. Table with 3 columns: POSITION, ON/OFF, and SETTING.

NOTICE FOR SERVICE ON THIS CONTROL Contact Your Machine ENTRON CONTROLS INC. DIRECTLY: (630) 682-0800

WIRING DIAGRAM, EN1001-1MU(SCR)/485. Includes a grid for revision control and a title block with drawing details.