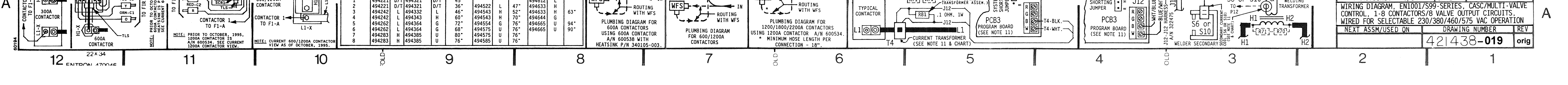
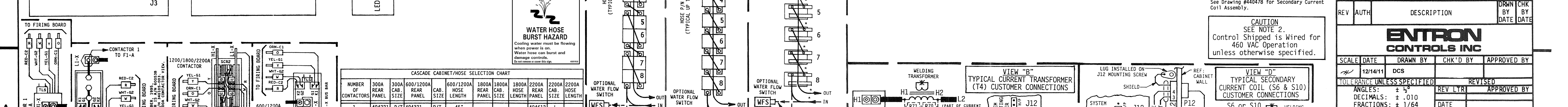
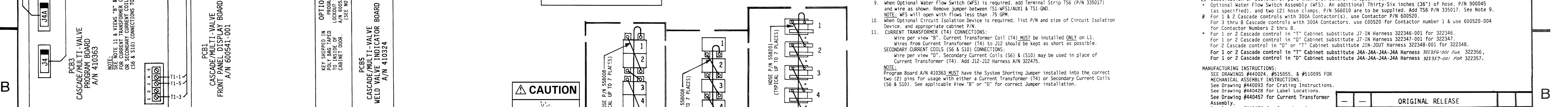
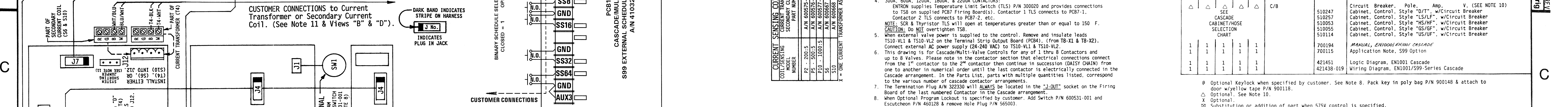
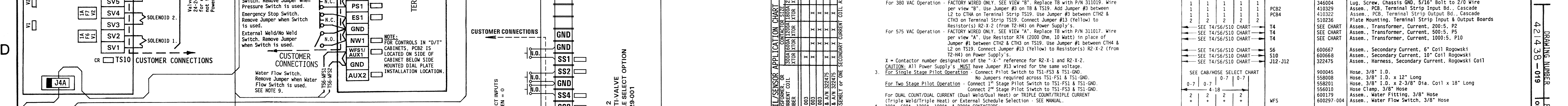
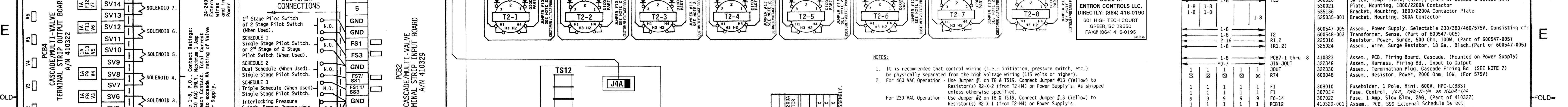
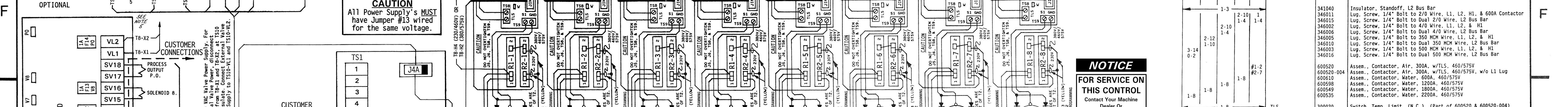
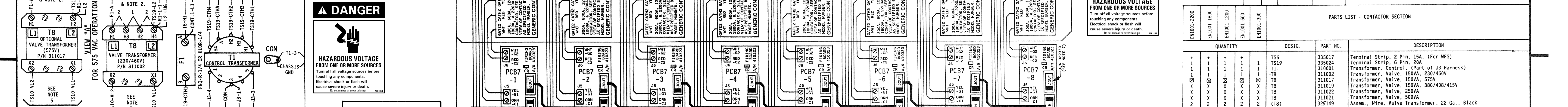
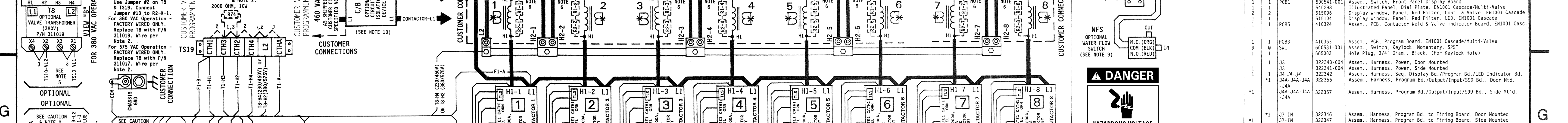


CAUTION - READ MANUAL & ALL NOTES BEFORE INSTALLING OR OPERATING CONTROL - SEE NOTE 1.
NO CIRCUIT CALIBRATION OR ADJUSTMENT EVER REQUIRED.



421438-019 orig

QUANTITY	DESIG.	PART NO.	DESCRIPTION
1	PCB1	600541-001	Assem., Dial Plate, EN1001 Cascade, Consisting of:
1		600541-001	Assem., Switch, Front Panel Display Board
1		545298	Illustrated Panel, Dial Plate, EN1001 Cascade/Multi-Valve
1		515096	Display Window, Panel, Red Filter, Cont. & Valve, EN1001 Cascade
1		515104	Display Window, Panel, Red Filter, LED, EN1001 Cascade
1		410324	Assem., PCB, Contactor Weld & Valve Indicator Board, EN1001 Casc.
1	PCB3	410363	Assem., PCB, Program Board, EN1001 Cascade/Multi-Valve
1	SW1	600531-001	Assem., Switch, Keylock, Momentary, SPST
1		565003	Hole Plug, 3/4" Diam., Black, (For Keylock Hole)
1	J33	322340-004	Assem., Harness, Power, Door Mounted
1	J33	322341-004	Assem., Harness, Power, Side Mounted
1	J34	322342-004	Assem., Harness, Sec. Display, Program Bd./LED Indicator Bd.
1	J44-J44-J44	322356	Assem., Harness, Program Bd./Output/Input/599 Bd., Door Mtd.
1	J44-J44-J44	322357	Assem., Harness, Program Bd./Output/Input/599 Bd., Side Mtd.
1	J7-IN	322346	Assem., Harness, Program Bd. to Firing Board, Door Mounted
1	J7-IN	322347	Assem., Harness, Program Bd. to Firing Board, Side Mounted

HAZARDOUS VOLTAGE FROM ONE OR MORE SOURCES

Turn off all voltage sources before touching any components. Electrical shock or flash will cause severe injury or death.

NOTICE FOR SERVICE ON THIS CONTROL

Contact Your Machine Dealer OR ENTRON CONTROLS LLC. DIRECTLY: (864) 416-0190 601 HIGH TECH COURT GREEN, SC 29650 FAX# (864) 416-0195

PARTS LIST - CONTACTOR SECTION

QUANTITY	DESIG.	PART NO.	DESCRIPTION
1	TS6	335017	Terminal Strip, 2 Pin, 15A, (For WFS)
1	TS19	335024	Terminal Strip, 6 Pin, 20A
1	T8	311002	Transformer, Valve, 150VA, 230/460V
1	T8	311017	Transformer, Valve, 150VA, 575V
1	T8	311019	Transformer, Valve, 150VA, 300/400/415V
1	T8	311022	Transformer, Valve, 250VA
1	T8	311021	Transformer, Valve, 500VA
1	T8	325149	Assem., Wire, Valve Transformer, 22 Ga., Black
1-3		341040	Insulator, Standoff, L2 Bus Bar
1-10		346011	Lug, Screw, 1/4" Bolt to 2/0 Wire, L1, L2, H1, & 600A Contactor
1-10		346015	Lug, Screw, 1/4" Bolt to Dual 2/0 Wire, L2 Bus Bar
1-10		346016	Lug, Screw, 1/4" Bolt to 4/0 Wire, L1, L2, & H1
1-10		346006	Lug, Screw, 1/4" Bolt to Dual 4/0 Wire, L2 Bus Bar
1-10		346005	Lug, Screw, 1/4" Bolt to 350 MCM Wire, L1, L2, & H1
1-10		346000	Lug, Screw, 1/4" Bolt to Dual 350 MCM Wire, L2 Bus Bar
1-10		346003	Lug, Screw, 1/4" Bolt to 500 MCM Wire, L1, L2, & H1
1-10		346016	Lug, Screw, 1/4" Bolt to Dual 500 MCM Wire, L2 Bus Bar
1-8		600520	Assem., Contactor, Afr. 300A, w/TL5, 460/575V
1-8		600520-004	Assem., Contactor, Afr. 300A, w/TL5, 460/575V, w/o L1 Lug
1-8		600531	Assem., Contactor, Water, 600A, 460/575V
1-8		600549	Assem., Contactor, Water, 1200A, 460/575V
1-8		600535	Assem., Contactor, Water, 1800A, 460/575V
1-8		600535	Assem., Contactor, Water, 2200A, 460/575V
1-8	TL5	300020	Switch, Temp. Limit, (N.C.), (Part of 600520 & 600520-004)
1-8		530021	Plate, Mounting, 1800/2200A Contactor
1-8		53136	Bracket, Mounting, 1800/2200A Contactor Plate
1-8		525035-001	Bracket, Mounting, 300A Contactor
1-8		600547-005	Assem., Power Supply, Selectable 230/380/460/575V, Consisting of:
1-8		600548-003	Transformer, Sense, (Part of 600547-005)
1-8		225016	Resistor, Power, Surge, 500 Ohm, 100W, (Part of 600547-005)
1-8		325024	Resistor, Power, Surge Resistor, 18 Ga., Black, (Part of 600547-005)
1-8		410323	Assem., PCB, Firing Board, Cascade, (Mounted on Power Supply)
1-8		410323-001	Assem., Harness, Firing Bd., Input to Output
1-8		322340	Assem., Termination Plug, Cascade Firing Bd. (See Note 7)
1-8		600408	Assem., Resistor, Power, 2000 Ohm, 10W, (For 575V)
1-8		308010	Fuseholder, 1 Pole, Mini, 600V, HPC-L(8BS)
1-8		307024	Fuse, Control, 1/4" Dia., 2AG, (Part of 410323-001)
1-8		307022	Fuse, 1 Amp, Slow Blow, 2AG, (Part of 410323-001)
1-8		410325-001	Assem., PCB, S99 External Schedule Select
1-8		346004	Lug, Screw, Chassis GND, 5/16" Bolt to 2/0 Wire
1-8		410329	Assem., PCB, Terminal Strip Input Bd., Cascade
1-8		410332	Assem., PCB, Terminal Strip Output Bd., Cascade
1-8		510236	Plate Mounting, Terminal Strip Input & Output Boards
1-8		510114	Assem., Transformer, Current, 200-5, P2
1-8		510114	Assem., Transformer, Current, 600-5, P2
1-8		510114	Assem., Transformer, Current, 1000-5, P10
1-8		600667	Assem., Secondary Current, 6" Coil Rogowski
1-8		600668	Assem., Secondary Current, 10" Coil Rogowski
1-8		322475	Assem., Harness, Secondary Current, Rogowski Coil
1-8		900045	Hose, 3/8" I.D.
1-8		558008	Hose, 3/8" I.D. x 12' Long
1-8		558201	Hose, 3/8" I.D. x 2-3/8" Dia. Coil x 18' Long
1-8		556010	Hose Clamp, 3/8" Hose
1-8		600179	Assem., Water Fitting, 3/8" Hose
1-8		600297-004	Assem., Water Flow Switch, 3/8" Hose
1-8		510247	Circuit Breaker, Pole, Amp. V. (See Note 10)
1-8		510251	Cabinet, Control, Style "D/T", w/Circuit Breaker
1-8		510053	Cabinet, Control, Style "HS/HF", w/Circuit Breaker
1-8		510055	Cabinet, Control, Style "GS/GF", w/Circuit Breaker
1-8		510114	Cabinet, Control, Style "US/UF", w/Circuit Breaker

MANUFACTURING INSTRUCTIONS:

SEE DRAWINGS #440024, #515095, & #510095 FOR MECHANICAL ASSEMBLY INSTRUCTIONS. See Drawing #440093 for Crating Instructions. See Drawing #440428 for Label Locations. See Drawing #440457 for Current Transformer Assembly. See Drawing #440478 for Secondary Current Coil Assembly.

CAUTION

Control Shipped is Wired for 460 VAC Operation unless otherwise specified.

ENTRON CONTROLS INC.

SCALE DATE 12/14/11 DCS

WIRING DIAGRAM, EN1001/S99-SERIES, CASCO/MULTI-VALVE CONTROL 1-8 CONTACTORS/8 VALVE OUTPUT CIRCUITS, WIRED FOR 460 VAC OPERATION

421438-019 orig

REV	AUTH	DESCRIPTION	DRWN	CHK'D	BY	DATE